



Clark County Senatorial Districts - 2010 Native Hawaiian and Other Pacific Islander Alone Population

Senatorial District	Current Member Representing District	2010 Native Hawaiian and Other Pacific Islander Alone*	Percent of 2010 Total
Clark 1	Lee	1,385	0.9%
Clark 2	Denis	350	0.4%
Clark 3	Wiener	839	0.8%
Clark 4	Horsford	898	0.7%
Clark 5**	Breeden & Roberson	1,867	0.7%
Clark 6	Copenig	582	0.6%
Clark 7**	Manendo & Parks	1,684	0.8%
Clark 8	Cegavske	600	0.6%
Clark 9	Halseth	2,435	0.7%
Clark 10	Kihuen	469	0.5%
Clark 11	Schneider	863	0.7%
Clark 12	Hardy	1,619	0.8%

Legend

Senatorial Districts

Native Hawaiian & Other Pacific Islander Alone Population by Block Groups

66 - 84

41 - 65

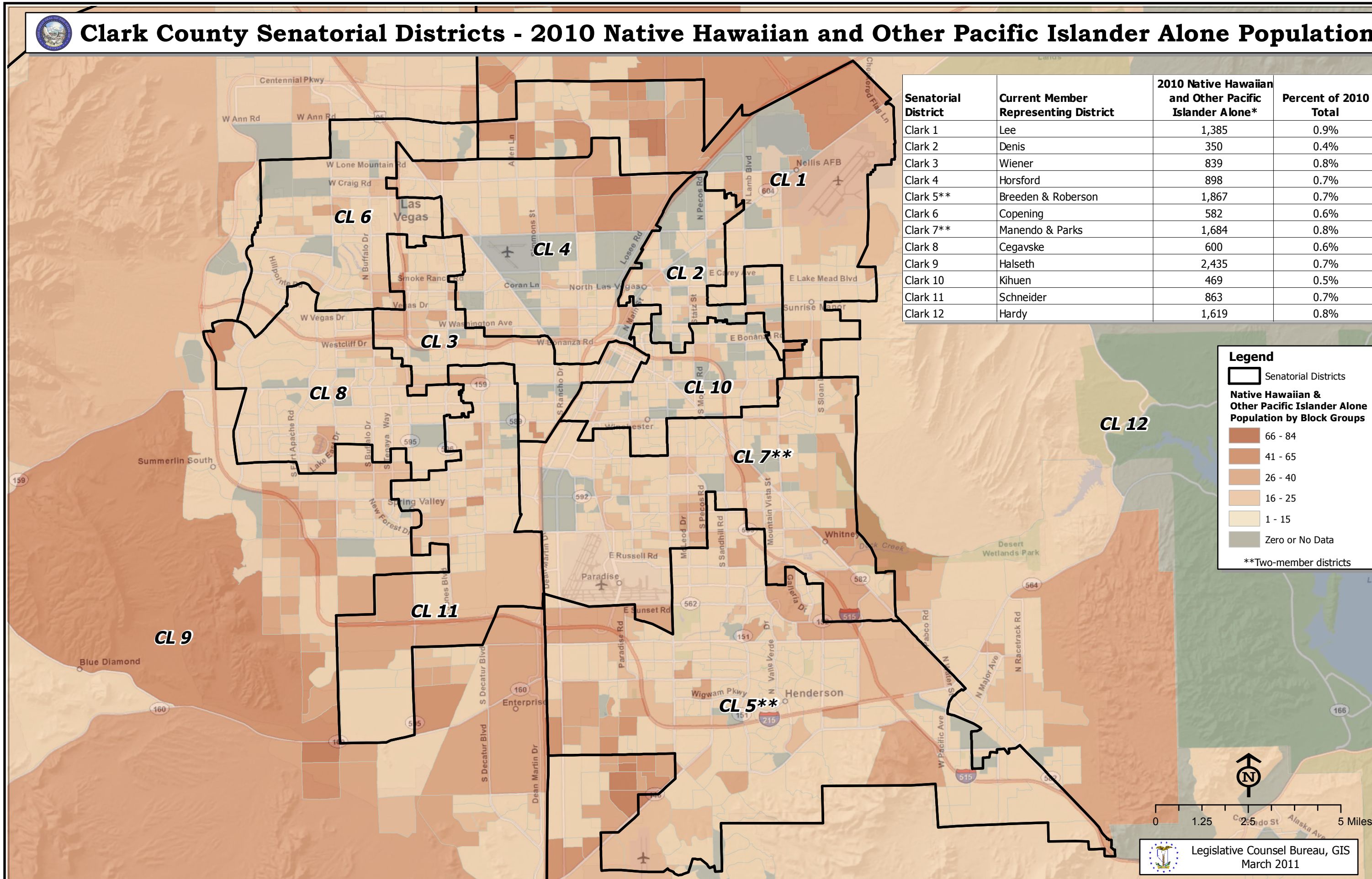
26 - 40

16 - 25

1 - 15

Zero or No Data

**Two-member districts



0 1.25 2.5 5 Miles

Legislative Counsel Bureau, GIS
March 2011

Note: The population database is derived from the 2010 Census Public Law 94-171 Redistricting Data as provided by the U.S. Bureau of the Census and validated by the Legislative Counsel Bureau.
*Racial population data is based on self-identification. Respondents have the option of selecting one or more races.