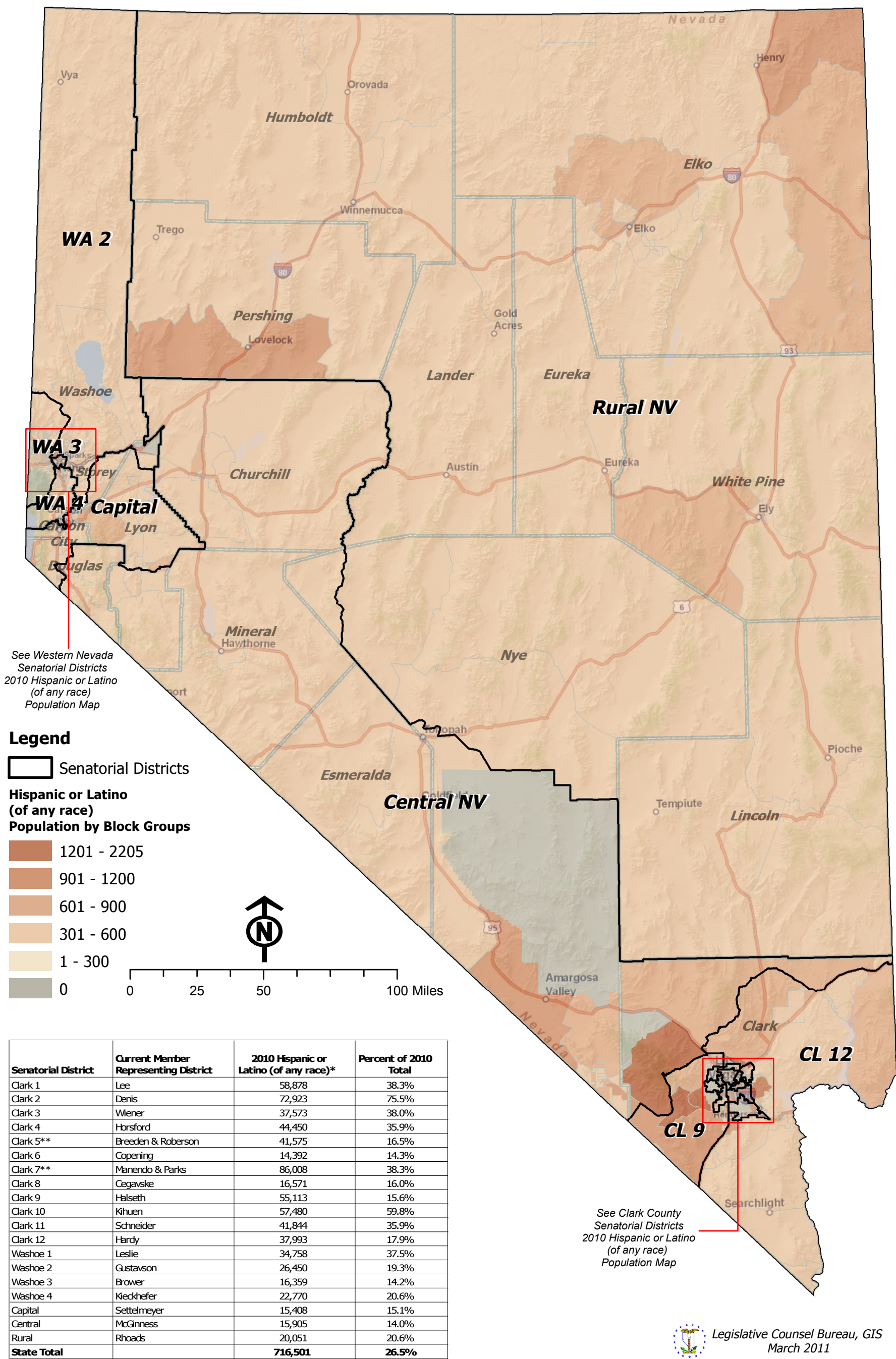


State of Nevada Senatorial Districts

2010 Hispanic or Latino (of any race) Population



Note: The population database is derived from the 2010 Census Public Law 94-171 Redistricting Data as provided by the U.S. Bureau of the Census and validated by the Legislative Counsel Bureau.

*Hispanic or Latino is reported by the Census Bureau as a language group, separately.

Racial population data is based on self-identification. Respondents have the option of selecting one or more races.