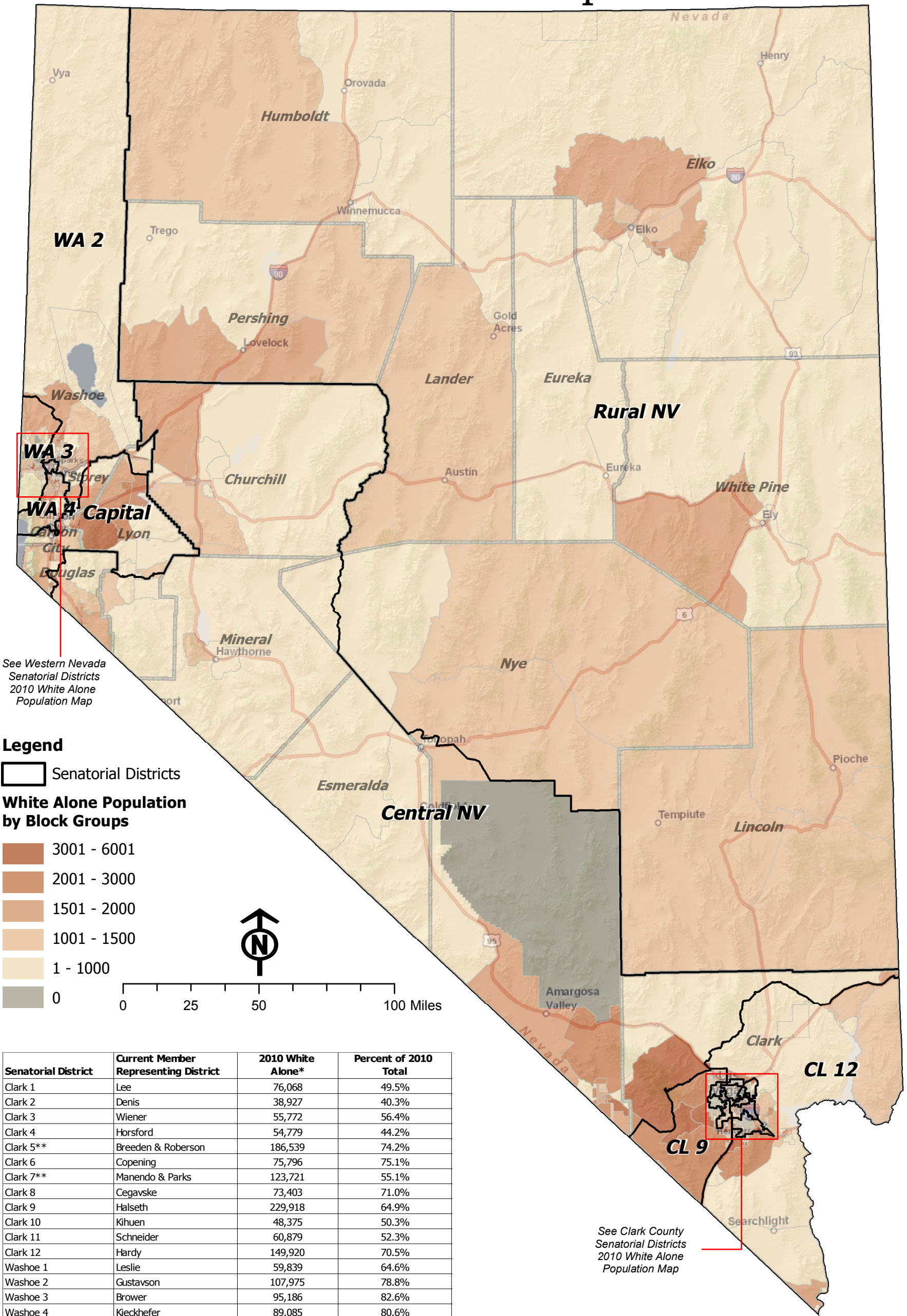


State of Nevada Senatorial Districts

2010 White Alone Population



Senatorial District	Current Member Representing District	2010 White Alone*	Percent of 2010 Total
Clark 1	Lee	76,068	49.5%
Clark 2	Denis	38,927	40.3%
Clark 3	Wiener	55,772	56.4%
Clark 4	Horsford	54,779	44.2%
Clark 5**	Breeden & Roberson	186,539	74.2%
Clark 6	Copenig	75,796	75.1%
Clark 7**	Manendo & Parks	123,721	55.1%
Clark 8	Cegavske	73,403	71.0%
Clark 9	Halseth	229,918	64.9%
Clark 10	Kihuen	48,375	50.3%
Clark 11	Schneider	60,879	52.3%
Clark 12	Hardy	149,920	70.5%
Washoe 1	Leslie	59,839	64.6%
Washoe 2	Gustavson	107,975	78.8%
Washoe 3	Brower	95,186	82.6%
Washoe 4	Kieckhefer	89,085	80.6%
Capital	Settelmeyer	87,217	85.4%
Central	McGinness	94,185	83.2%
Rural	Rhoads	79,104	81.3%
State Total		1,786,688	66.2%

Note: The population database is derived from the 2010 Census Public Law 94-171 Redistricting Data as provided by the U.S. Bureau of the Census and validated by the Legislative Counsel Bureau.

*Racial population data is based on self-identification. Respondents have the option of selecting one or more races.