

Demographic Profile of Nevada Assembly District No. 25* of the 77th Session (2013)



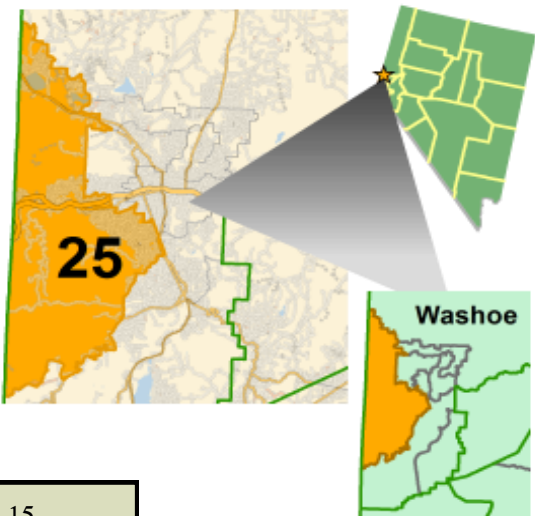
Assemblyman Pat Hickey

Republican

Pat.Hickey@asm.state.nv.us

(775) 762-8006 (C)

(775) 329-7802 (F)



Assembly District No. 25 is nested within Senate District No. 15.
Total population from the 2010 Census for Assembly District No. 25 is 64,127.

Race and Ethnicity**

Race/Ethnicity	Assembly District No. 25	Nevada
White	84.7%	73.5%
Black	1.8%	8.0%
AIAN	1.1%	1.1%
Asian	5.0%	7.1%
NHOPI	0.5%	0.6%
Some Other	4.1%	6.2%
Two or More	2.7%	3.6%
Hispanic or Latino	13.0%	26.1%

Age Distribution

Age Range	Assembly District No. 25	Nevada
< 5	6.7%	7.0%
5-17	16.0%	17.7%
18-39	26.4%	30.9%
40-59	29.5%	26.9%
60-74	15.1%	12.7%
> 74	6.3%	4.6%

Educational Attainment (25 Years and Older)

Education Level	Assembly District No. 25	Nevada
No High School Diploma	7.6%	15.7%
High School Graduate	19.5%	29.2%
Associate's Degree	33.5%	32.9%
Bachelor's Degree	23.4%	14.7%
Graduate Degree	15.9%	7.4%

Household Income

Income	Assembly District No. 25	Nevada
< \$25,000	13.4%	19.5%
\$25,000-34,999	7.5%	10.6%
\$35,000-49,999	12.0%	14.3%
\$50,000-74,999	18.8%	20.6%
\$75,000-99,999	13.4%	13.7%
\$100,000-149,999	19.4%	13.4%
\$150,000-199,999	6.6%	4.3%
> \$199,999	8.9%	3.6%

Employment By Industry—Top Five

Industry	Assembly District No. 25	Nevada
Government	13.6%	11.7%
Health Care	12.8%	7.9%
Professional	10.6%	9.5%
Retail	10.3%	10.8%
Education	8.9%	5.8%

Veteran Status

Veteran Type	Assembly District No. 25	Nevada
Gulf War 1990–2011	17.1%	22.3%
Other Wartime	56.9%	51.8%
Peacetime	26.0%	25.9%

Active Voters by Party†

Party	Assembly District No. 25	Nevada
Democrat	34.4%	42.1%
Independent American	4.4%	4.7%
Libertarian	0.8%	0.7%
Non-Partisan	16.1%	17.5%
Other	0.9%	0.6%
Republican	43.5%	34.4%

Home Occupancy Status

Status	Assembly District No. 25	Nevada
Owner Occupied	68.1%	59.1%
Renter Occupied	32.0%	40.8%
Vacant	8.9%	14.9%

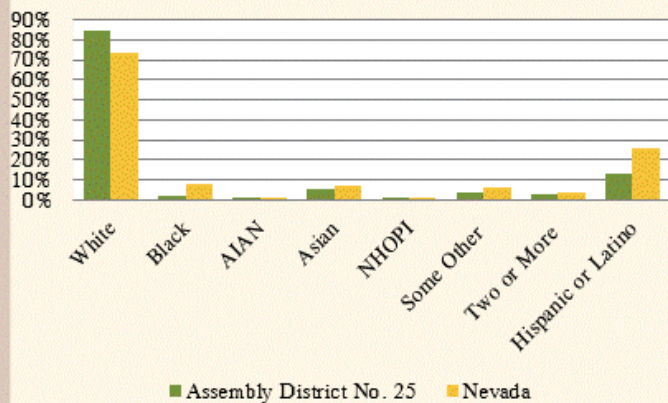
*Source: American Community Survey, United States Census Bureau, 2011.

**The "Hispanic or Latino Origin" category is not considered a racial group by the U.S. Census Bureau. Only the other seven categories shown on this page will total 100 percent. The U.S. Census Bureau has reported that, in the past, a majority of persons selecting the "Some Other Race" category were of Hispanic or Latino origin. Please note that American Indian and Alaska Native is represented as AIAN and Native Hawaiian and Other Pacific Islander is represented as NHOPI.

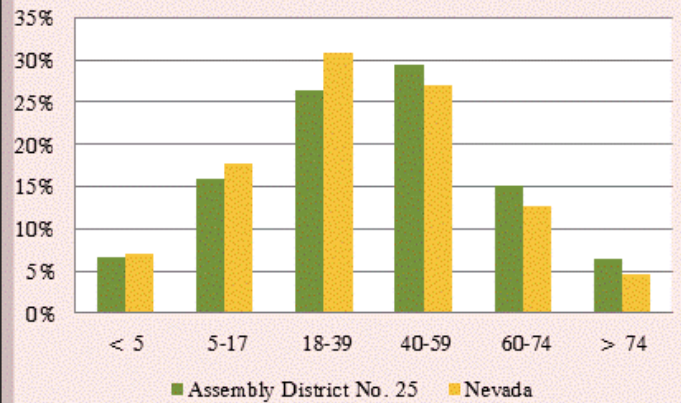
†"Active Voter" includes any registered voter who is legally entitled to vote. Source: Secretary of State, December 2012.

Statistical Profile of Nevada Assembly District No. 25 of the 77th Session (2013)

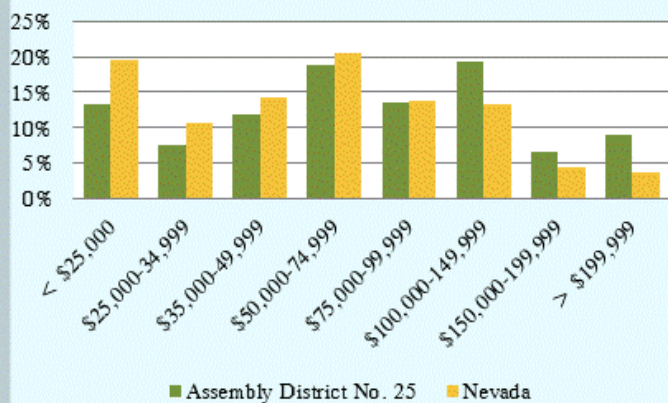
Race and Ethnicity**



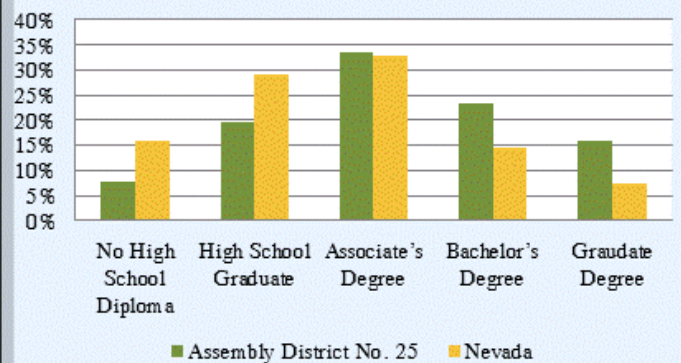
Age Distribution



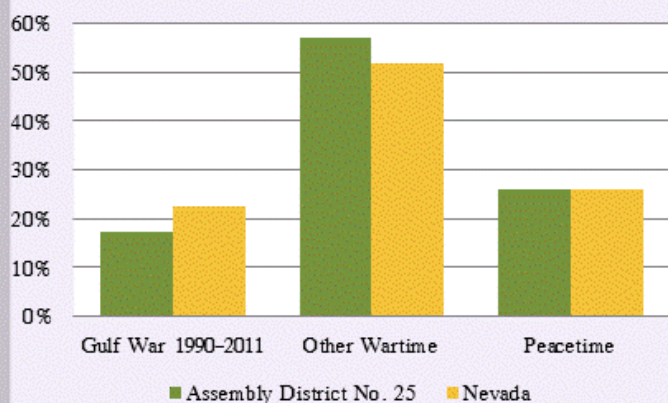
Household Income



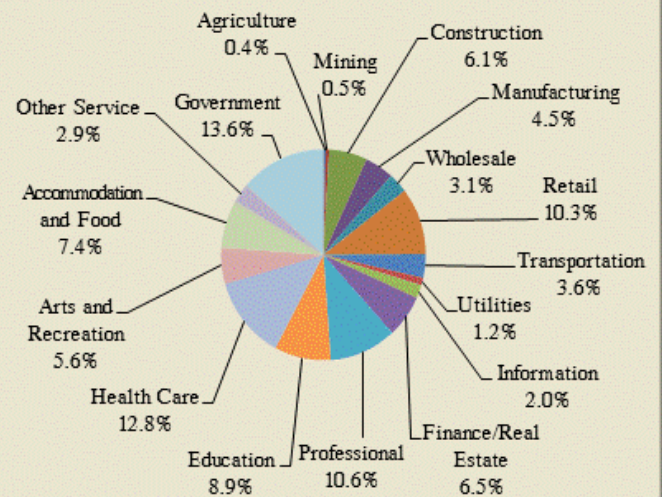
Educational Attainment (25 Years and Older)



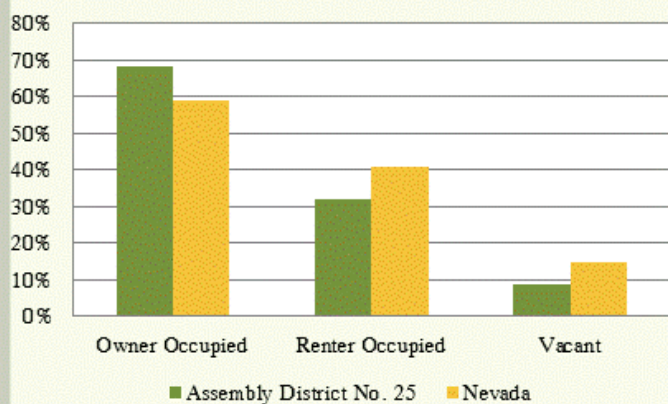
Veteran Status



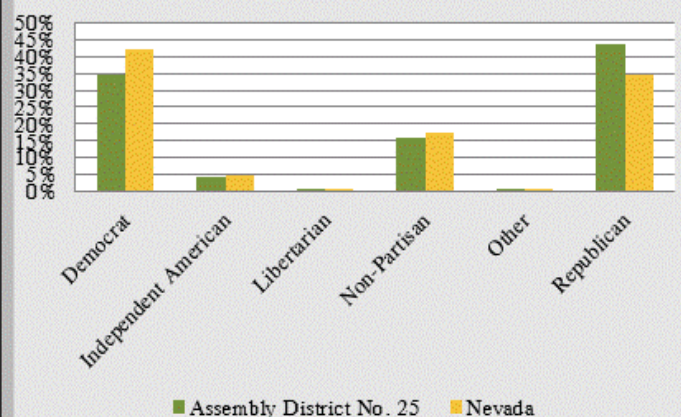
Employment By Industry



Home Occupancy Status



Active Voters By Party†



**Hispanic or Latino is reported by the U.S. Census Bureau as a language group, separately. Racial population data is based on self-identification. Respondents have the option of selecting one or more races. Please note that American Indian and Alaska Native is represented as AIAN and Native Hawaiian and Other Pacific Islander is represented as NHOPI.

†Source: Secretary of State, December 2012.

Additional information is available on the Nevada Legislature's website at <http://www.leg.state.nv.us>.