

Demographic Profile of Nevada Assembly District No. 33* of the 77th Session (2013)



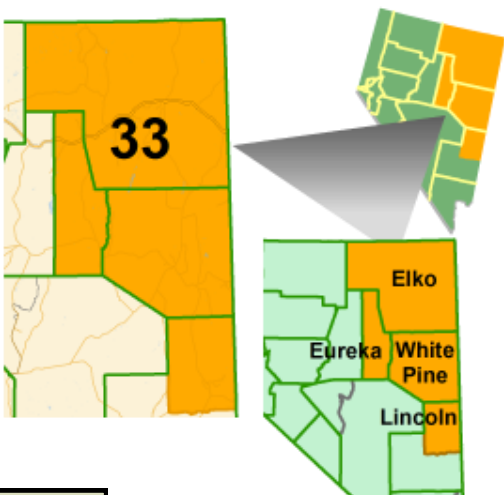
Assemblyman John C. Ellison

Republican

John.Ellison@asm.state.nv.us

(775) 738-6284 (H/O)

(775) 934-6611 (C)



Assembly District No. 33 is nested within Senate District No. 19.
Total population from the 2010 Census for Assembly District No. 33 is 64,448.

Race and Ethnicity**

Race/Ethnicity	Assembly District No. 33	Nevada
White	89.2%	73.5%
Black	1.0%	8.0%
AIAN	5.4%	1.1%
Asian	0.7%	7.1%
NHOPI	0.1%	0.6%
Some Other	1.9%	6.2%
Two or More	1.7%	3.6%
Hispanic or Latino	19.5%	26.1%

Age Distribution

Age Range	Assembly District No. 33	Nevada
< 5	7.6%	7.0%
5-17	20.0%	17.7%
18-39	28.0%	30.9%
40-59	28.2%	26.9%
60-74	11.7%	12.7%
> 74	3.6%	4.6%

Educational Attainment (25 Years and Older)

Education Level	Assembly District No. 33	Nevada
No High School Diploma	14.5%	15.7%
High School Graduate	32.1%	29.2%
Associate's Degree	36.7%	32.9%
Bachelor's Degree	10.6%	14.7%
Graduate Degree	4.2%	7.4%

Household Income

Income	Assembly District No. 33	Nevada
< \$25,000	17.6%	19.5%
\$25,000-34,999	6.9%	10.6%
\$35,000-49,999	11.4%	14.3%
\$50,000-74,999	22.8%	20.6%
\$75,000-99,999	19.0%	13.7%
\$100,000-149,999	16.6%	13.4%
\$150,000-199,999	3.7%	4.3%
> \$199,999	2.1%	3.6%

Employment By Industry—Top Five

Industry	Assembly District No. 33	Nevada
Mining	20.0%	1.0%
Government	18.4%	11.7%
Arts and Recreation	8.8%	8.2%
Accommodation and Food	7.4%	15.2%
Retail	7.1%	10.8%

Veteran Status

Veteran Type	Assembly District No. 33	Nevada
Gulf War 1990–2011	18.1%	22.3%
Other Wartime	50.8%	51.8%
Peacetime	31.1%	25.9%

Active Voters by Party†

Party	Assembly District No. 33	Nevada
Democrat	23.5%	42.1%
Independent American	4.8%	4.7%
Libertarian	0.6%	0.7%
Non-Partisan	15.8%	17.5%
Other	0.4%	0.6%
Republican	54.9%	34.4%

Home Occupancy Status

Status	Assembly District No. 33	Nevada
Owner Occupied	72.6%	59.1%
Renter Occupied	25.8%	40.8%
Vacant	14.9%	14.9%

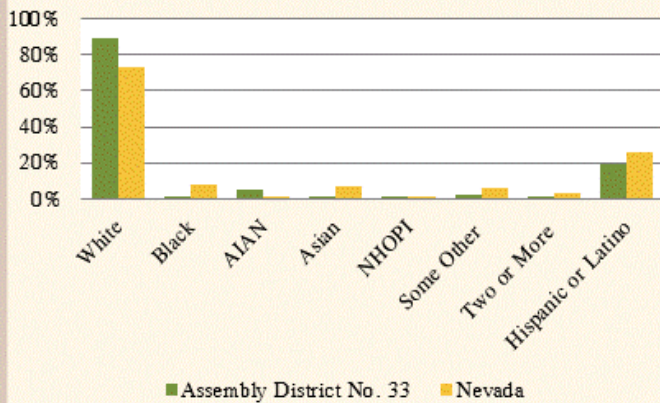
*Source: American Community Survey, United States Census Bureau, 2011.

**The "Hispanic or Latino Origin" category is not considered a racial group by the U.S. Census Bureau. Only the other seven categories shown on this page will total 100 percent. The U.S. Census Bureau has reported that, in the past, a majority of persons selecting the "Some Other Race" category were of Hispanic or Latino origin. Please note that American Indian and Alaska Native is represented as AIAN and Native Hawaiian and Other Pacific Islander is represented as NHOPI.

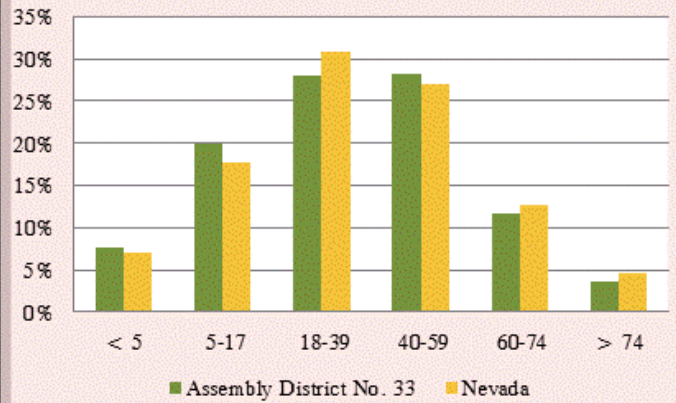
†"Active Voter" includes any registered voter who is legally entitled to vote. Source: Secretary of State, December 2012.

Statistical Profile of Nevada Assembly District No. 33 of the 77th Session (2013)

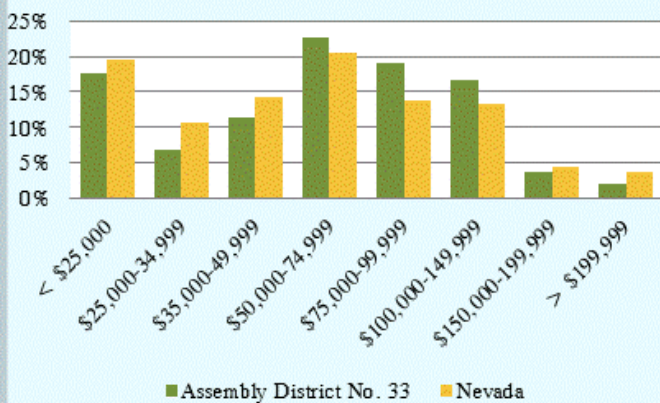
Race and Ethnicity**



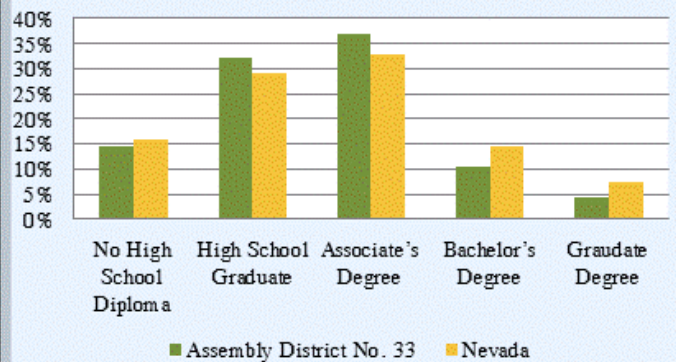
Age Distribution



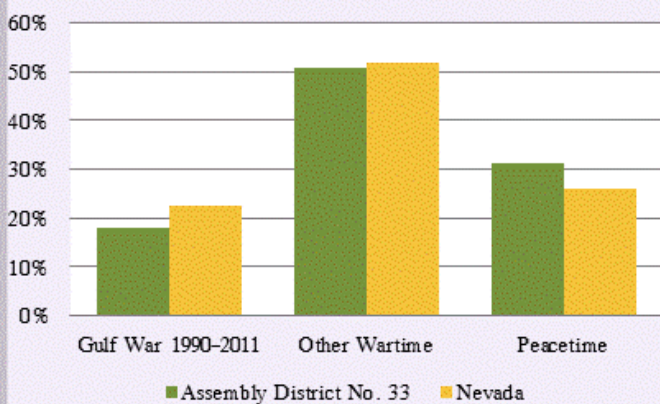
Household Income



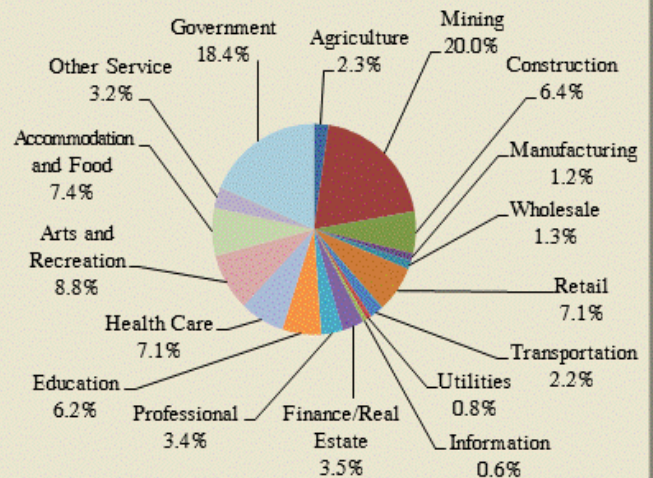
Educational Attainment (25 Years and Older)



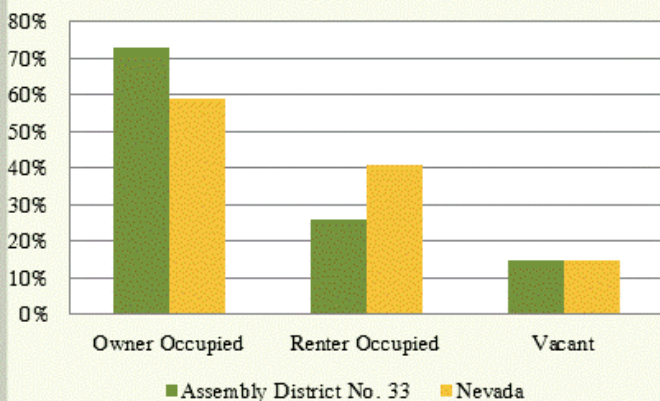
Veteran Status



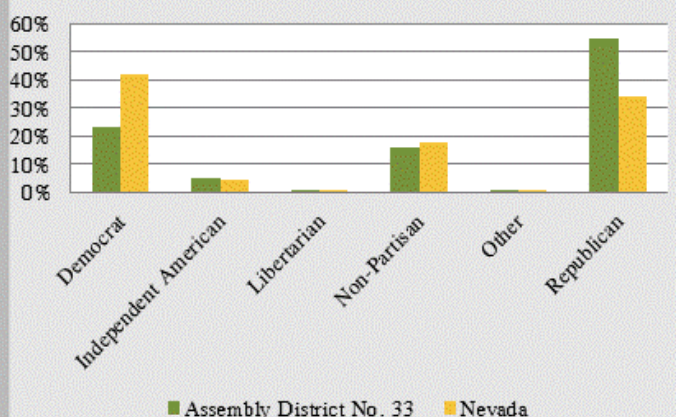
Employment By Industry



Home Occupancy Status



Active Voters By Party†



**Hispanic or Latino is reported by the U.S. Census Bureau as a language group, separately. Racial population data is based on self-identification. Respondents have the option of selecting one or more races. Please note that American Indian and Alaska Native is represented as AIAN and Native Hawaiian and Other Pacific Islander is represented as NHOPI.
†Source: Secretary of State, December 2012.