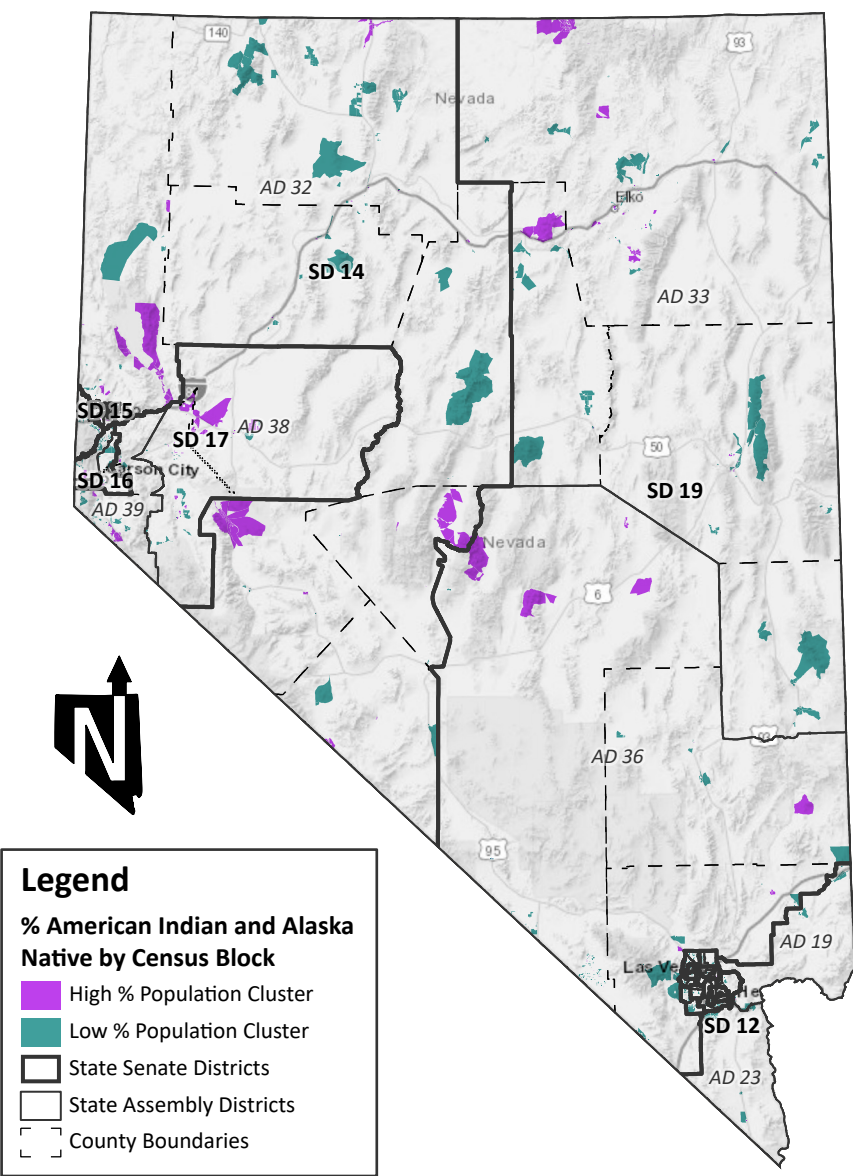
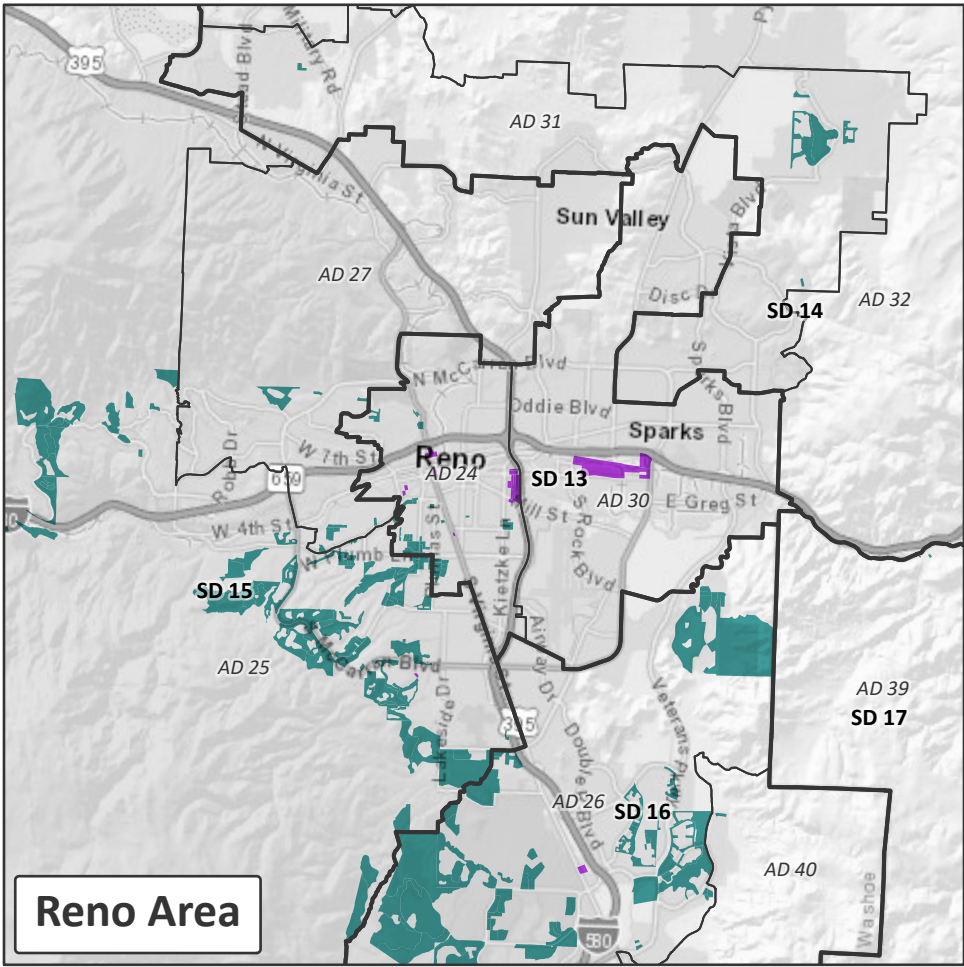
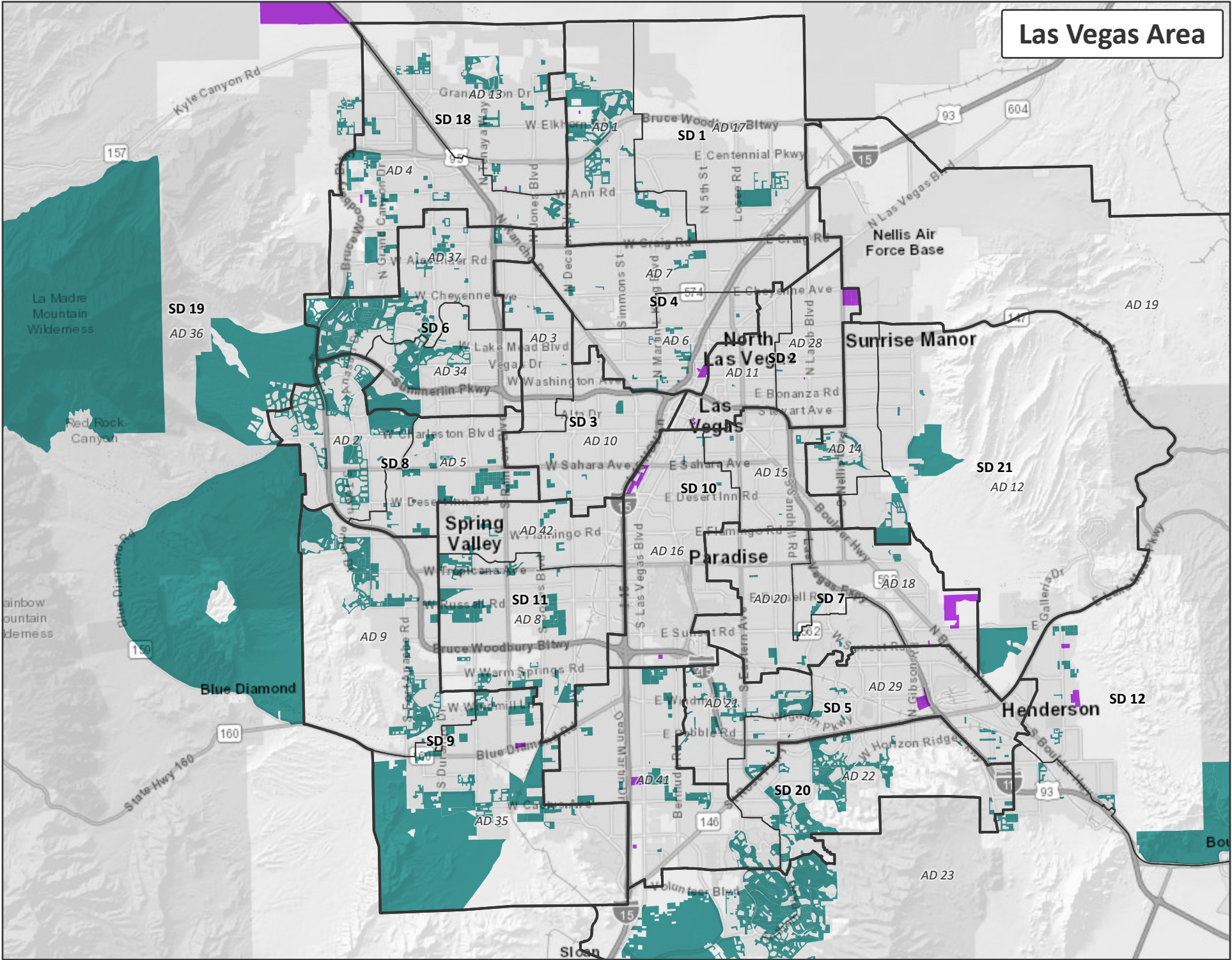


Cluster Analysis

American Indian and Alaska Native, Including American Indian and Alaska Native with Another Race(s)
2020 Census Data



Legend

- % American Indian and Alaska Native by Census Block
- High % Population Cluster
- Low % Population Cluster
- State Senate Districts
- State Assembly Districts
- County Boundaries

The population database is derived from the 2020 Census Public Law 94-171 Redistricting Data as provided by the U.S. Census Bureau and validated by the Legislative Counsel Bureau. Racial population data is based on self-identification. Respondents have the option of selecting one or more races. Hispanic or Latino is reported as a language group, separately.

Cluster Analysis

This map uses the *Anselin Local Moran's I* statistic to identify statistically significant clusters of census blocks and distinguish them from dissimilar neighboring census blocks that could be considered outliers or statistically random. This map does not identify which areas have the highest or lowest populations of a given group. The purpose of this map is to identify when similar high or low values are clustered.