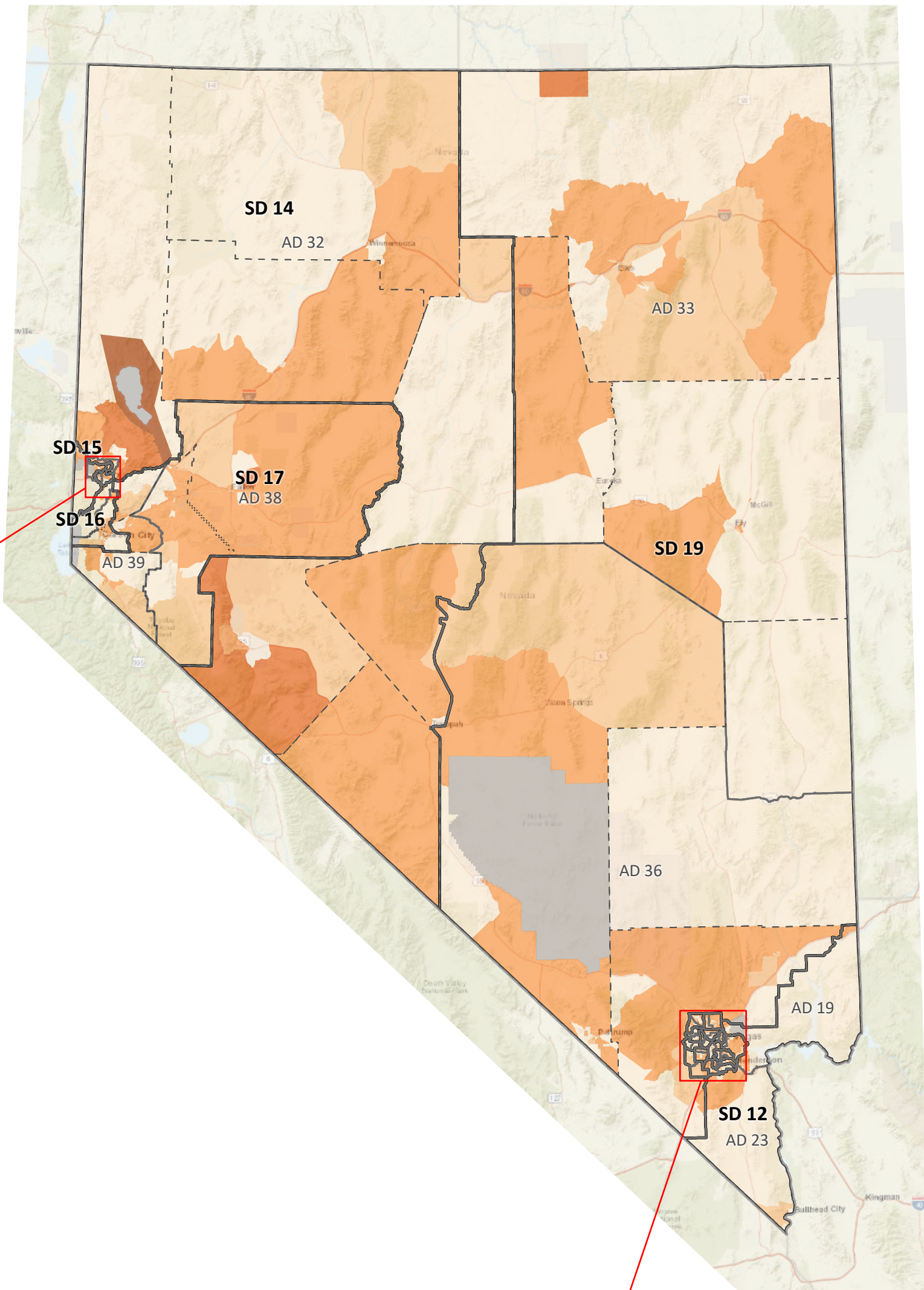
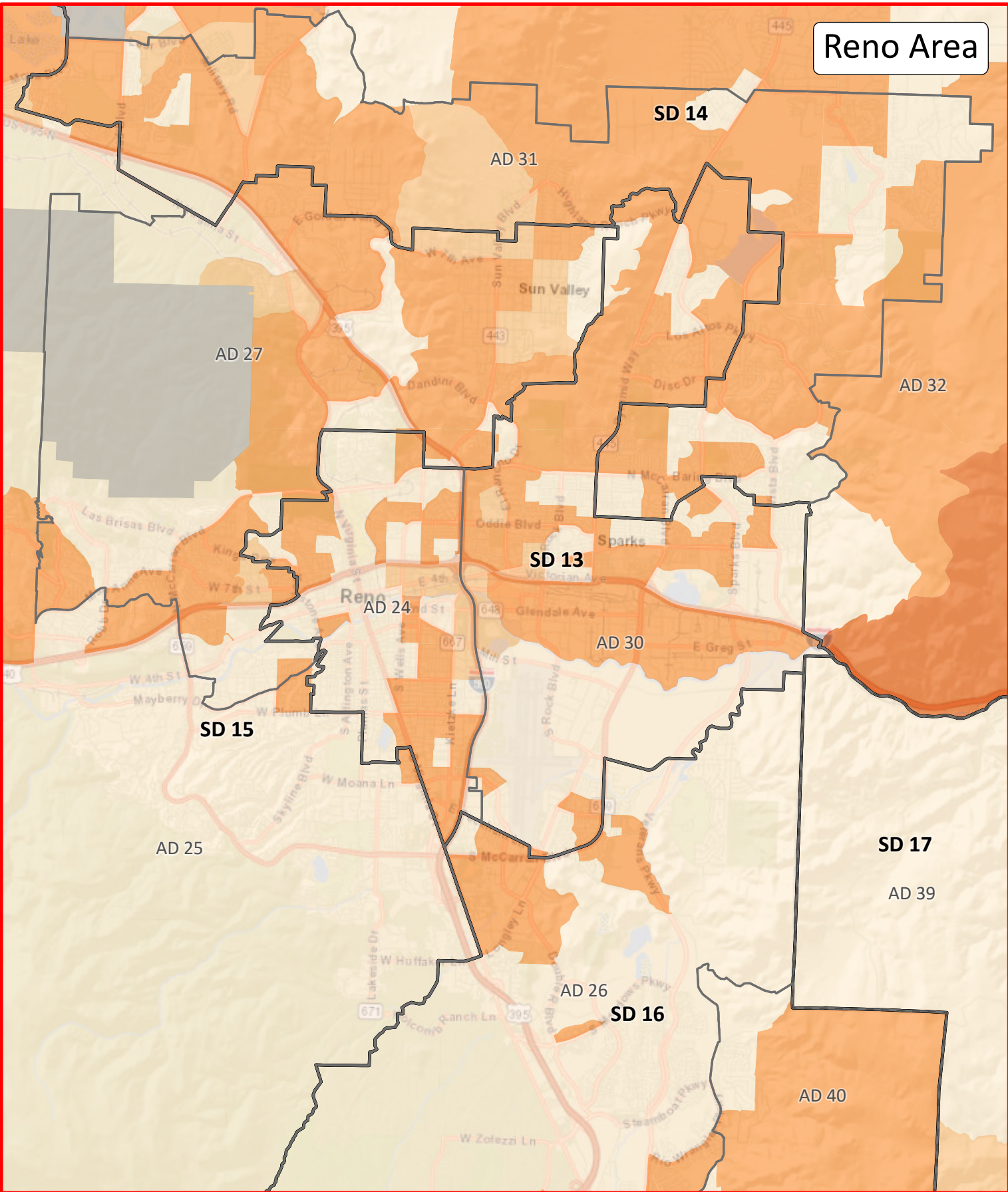


# NEVADA DEMOGRAPHICS BY CENSUS BLOCK GROUP

American Indian and Alaska Native, Including American Indian and Alaska Native with Another Race(s) Population  
2020 Census Data



Assembly District	Incumbent	2020 American Indian or Alaska Native, Including American Indian or Alaska Native with Another Race(s)	Percent of Total
1	Monroe-Moreno	2,089	2.7%
2	Kasama	1,272	1.8%
3	Torres	2,290	3.4%
4	McArthur	2,525	3.1%
5	Miller	1,656	2.5%
6	Summers-Armstrong	2,195	3.2%
7	Miller	2,370	3.3%
8	Frierson	1,861	2.3%
9	Yeager	2,048	2.1%
10	Nguyen	2,066	3.2%
11	Duran	1,985	3.3%
12	Martinez	2,481	3.0%
13	Roberts	2,117	3.0%
14	Carlton	2,072	3.2%
15	Watts	2,323	3.3%
16	González	2,141	3.1%
17	Thomas	2,631	3.0%
18	Considine	2,543	3.4%
19	Black	2,534	3.3%
20	Orentlicher	2,079	3.1%
21	Marzola	1,607	2.6%
22	Hardy	1,758	2.3%
23	Leavitt	1,943	2.4%
24	Peters	3,076	4.4%
25	Tolles	2,241	3.0%
26	Krasner	2,066	2.6%
27	Benitez-Thompson	2,779	4.0%
28	Flores	2,693	4.0%
29	Cohen	2,249	3.1%
30	Anderson	3,230	4.4%
31	Dickman	2,911	3.8%
32	Hansen	6,355	9.3%
33	Ellison	5,103	7.5%
34	Bilbray-Axelrod	1,854	2.7%
35	Gorelow	2,299	2.2%
36	Hafen	3,161	3.5%
37	Matthews	1,603	2.4%
38	Titus	4,934	7.1%
39	Wheeler	3,191	4.6%
40	O'Neill	3,459	4.9%
41	Jauregui	2,134	2.5%
42	Brown-May	1,866	2.9%
State Total		105,790	3.4%

**Legend**

County Borders

State Assembly Districts (2011)

State Senate Districts (2011)

American Indian and Alaska Native, Including American Indian and Alaska Native with Another Race(s) Population

1,001 - 1,500

501 - 1,000

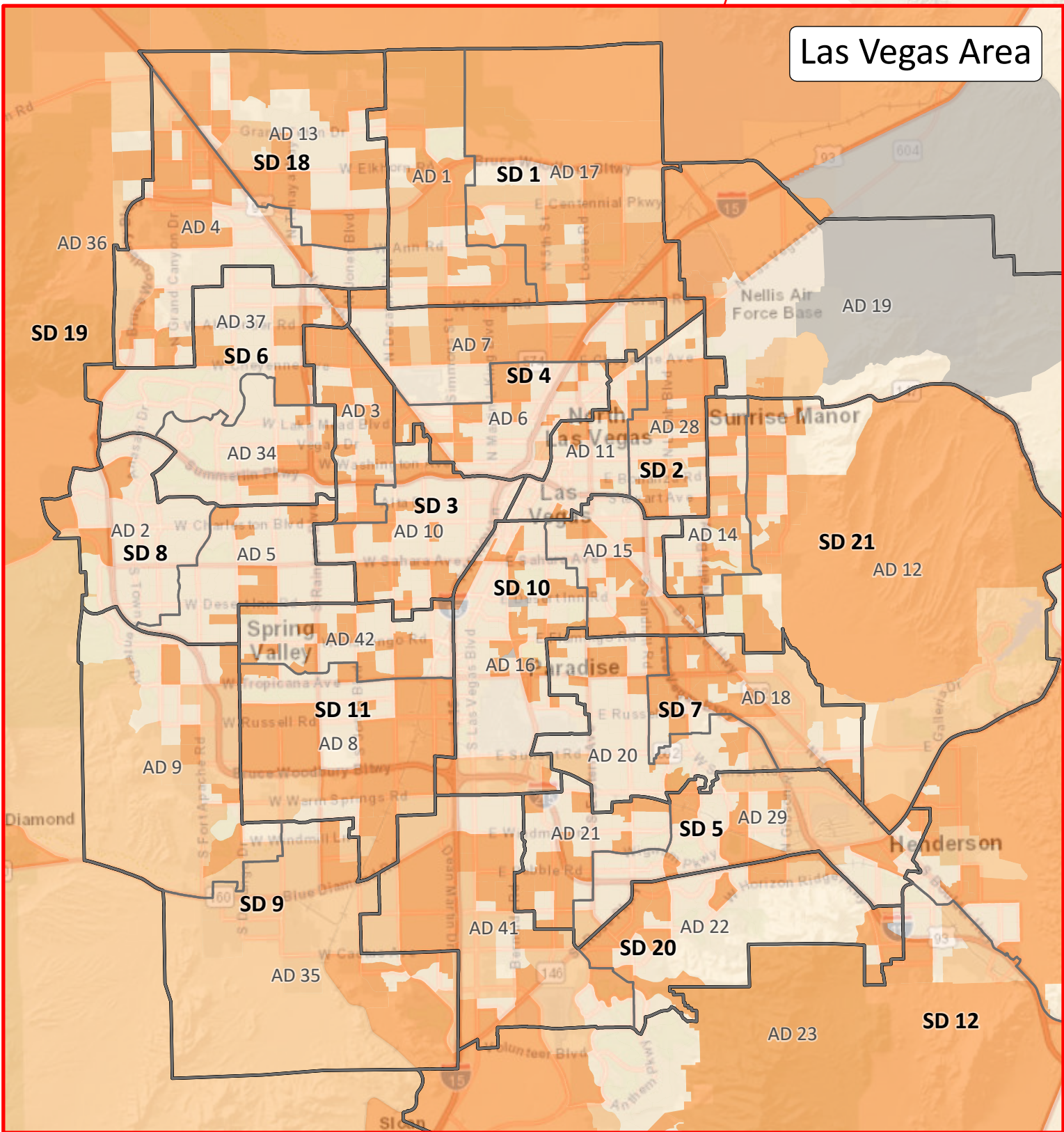
101 - 500

51 - 100

1 - 50

Zero or No Data

Senate District	Incumbent	2020 American Indian or Alaska Native, Including American Indian or Alaska Native with Another Race(s)	Percent of Total
1	Spearman	4,720	2.9%
2	Denis	4,678	3.6%
3	Brooks	4,356	3.3%
4	Neal	4,565	3.2%
5	Buck	3,856	2.9%
6	Cannizzaro	3,457	2.6%
7	Lange	4,622	3.2%
8	Dondero Loop	2,928	2.2%
9	Scheible	4,347	2.1%
10	Donate	4,464	3.2%
11	Harris	3,727	2.6%
12	Hardy	4,477	2.8%
13	Ratti	6,306	4.4%
14	Hansen	9,266	6.4%
15	Seever Gansert	5,020	3.5%
16	Kieckhefer	5,525	3.7%
17	Settelmeyer	8,125	5.9%
18	Hammond	4,642	3.0%
19	Goicoechea	8,264	5.2%
20	Pickard	3,892	2.4%
21	Ohrenschall	4,553	3.1%
State Total		105,790	3.4%



Note: The population database is derived from the 2020 Census Public Law 94-171 Redistricting Data as provided by the U.S. Census Bureau and validated by the Legislative Counsel Bureau.

Racial population data is based on self-identification. Respondents have the option of selecting one or more races. Hispanic or Latino is reported as a language group, separately.