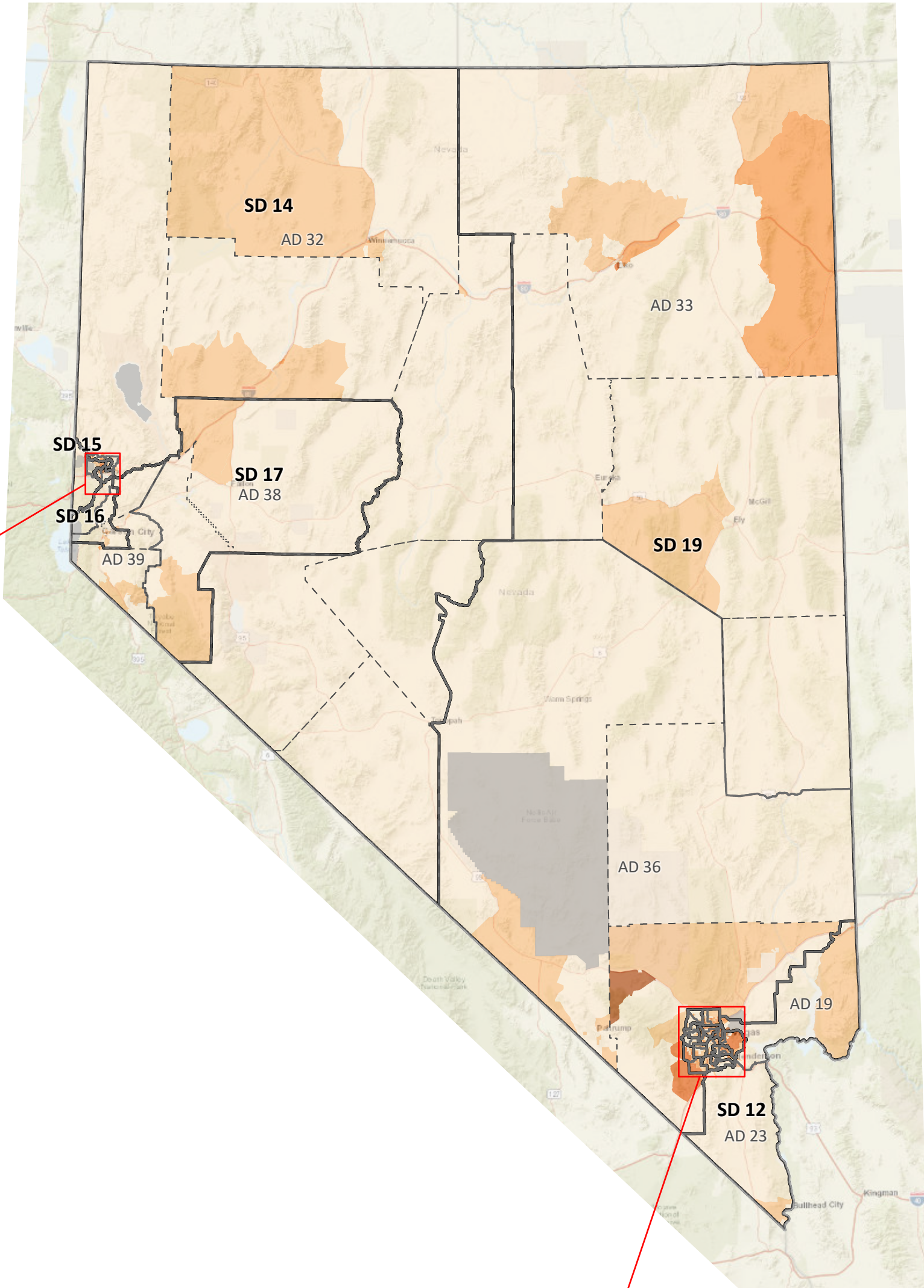
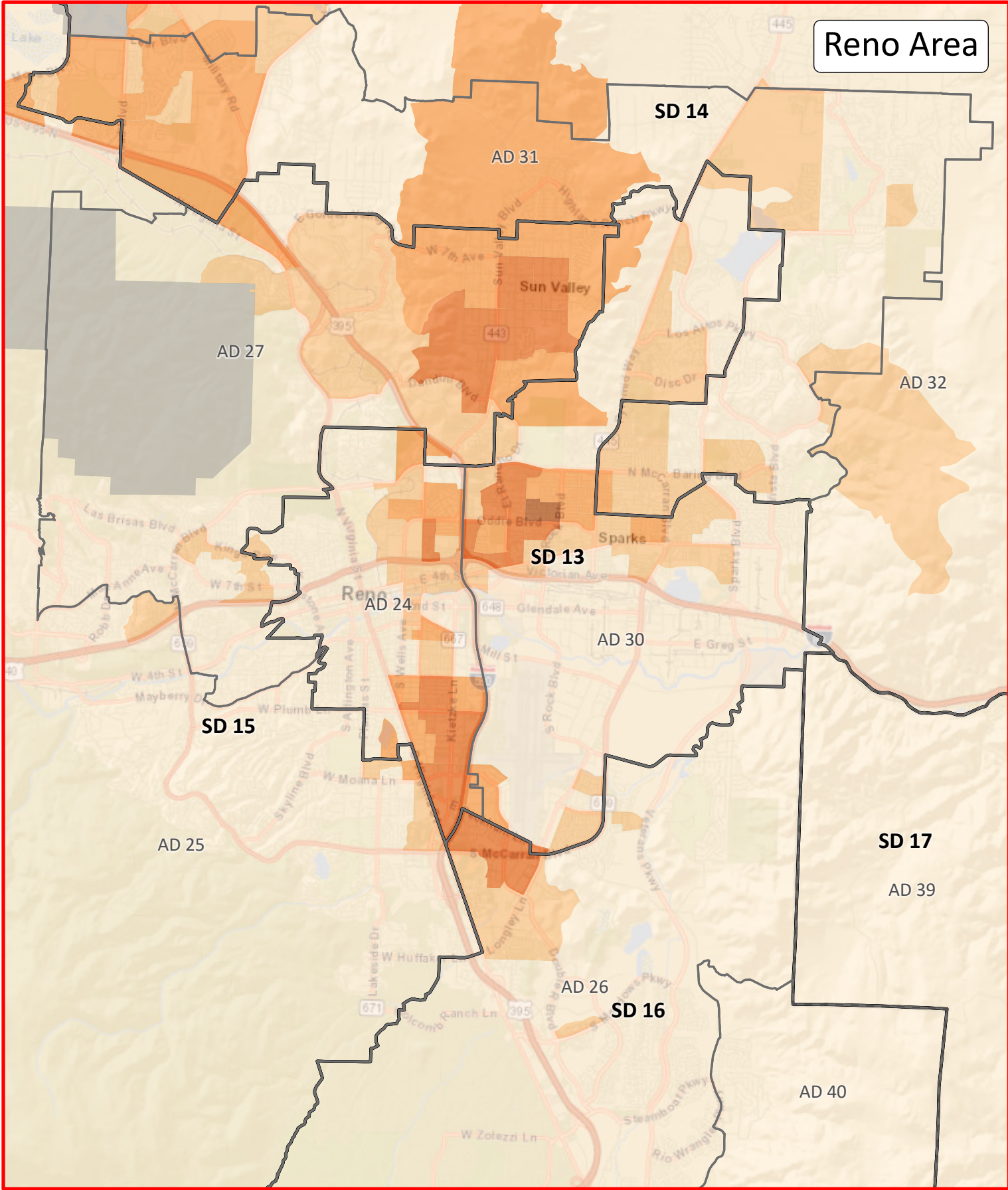


NEVADA DEMOGRAPHICS BY CENSUS BLOCK GROUP

Some Other Race Alone Population

2020 Census Data



Assembly District	Incumbent	2020 Some Other Race Alone	Percent of Total
1	Monroe-Moreno	10,100	12.8%
2	Kasama	2,944	4.2%
3	Torres	18,458	27.4%
4	McArthur	5,524	6.7%
5	Miller	6,279	9.5%
6	Summers-Armstrong	22,677	32.7%
7	Miller	18,514	25.8%
8	Frierison	7,175	8.9%
9	Yeager	6,617	6.6%
10	Nguyen	16,399	25.2%
11	Duran	25,401	41.8%
12	Martinez	15,890	19.4%
13	Roberts	4,200	5.9%
14	Carlton	21,600	32.9%
15	Watts	18,567	26.7%
16	González	12,680	18.6%
17	Thomas	14,284	16.4%
18	Considine	14,461	19.1%
19	Black	8,894	11.5%
20	Orentlicher	10,687	15.8%
21	Marzola	5,194	8.5%
22	Hardy	3,355	4.4%
23	Leavitt	2,846	3.5%
24	Peters	11,973	17.2%
25	Tolles	4,555	6.1%
26	Krasner	5,326	6.7%
27	Benitez-Thompson	9,783	14.0%
28	Flores	28,006	41.4%
29	Cohen	5,819	7.9%
30	Anderson	14,300	19.4%
31	Dickman	9,649	12.7%
32	Hansen	5,948	8.7%
33	Ellison	7,030	10.4%
34	Bilbray-Axelrod	9,153	13.5%
35	Gorelow	6,816	6.5%
36	Hafen	6,456	7.1%
37	Matthews	5,255	7.9%
38	Titus	4,509	6.5%
39	Wheeler	3,622	5.2%
40	O'Neill	7,473	10.6%
41	Jauregui	6,545	7.7%
42	Brown-May	10,793	16.8%
State Total		435,757	14.0%

Legend

County Borders

State Assembly Districts (2011)

State Senate Districts (2011)

Some Other Race Alone Population

1,001 - 1,600

501 - 1,000

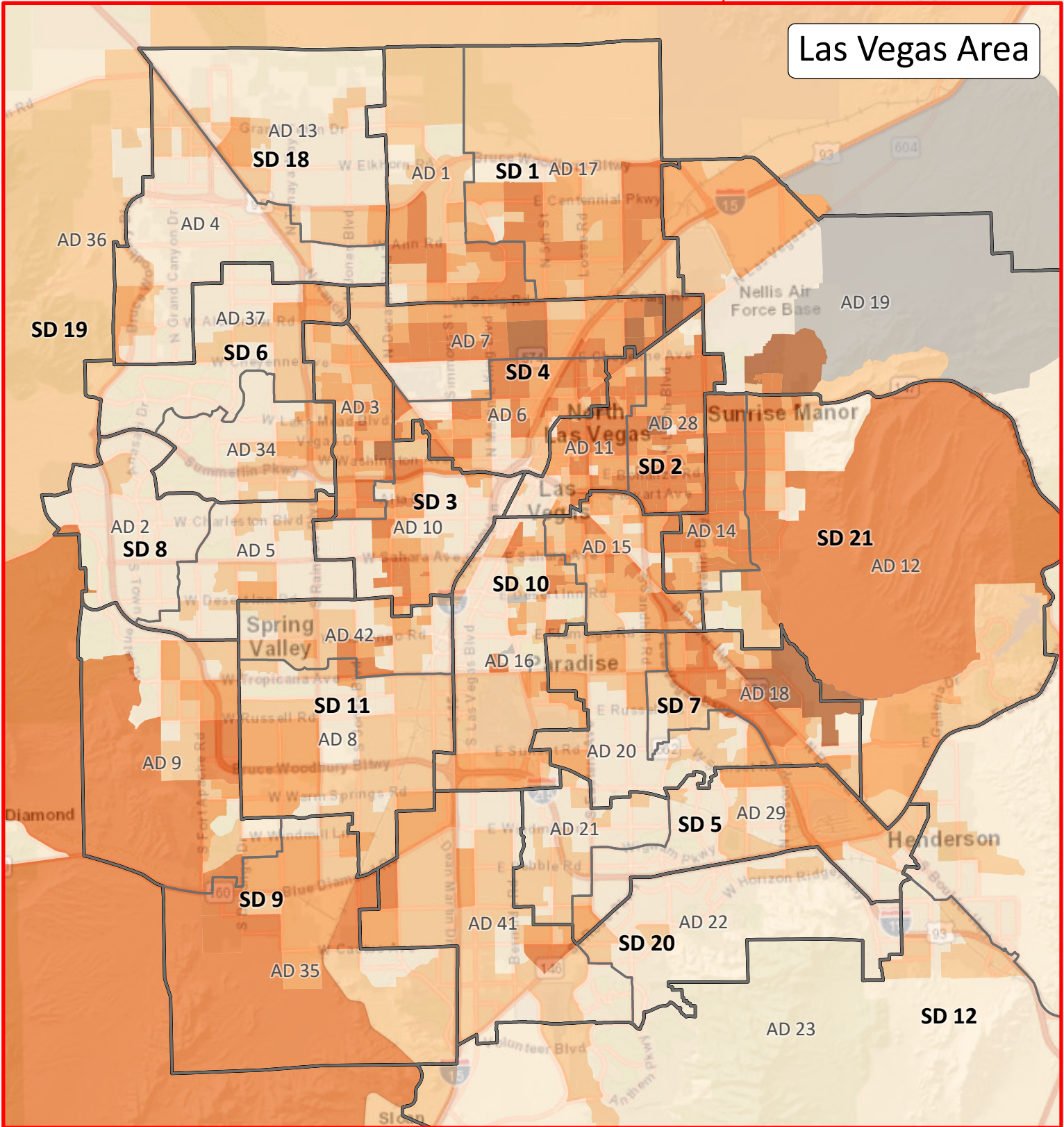
301 - 500

151 - 300

1 - 150

Zero or No Data

Senate District	Incumbent	2020 Some Other Race Alone	Percent of Total
1	Spearman	24,384	14.7%
2	Denis	53,407	41.6%
3	Brooks	34,857	26.3%
4	Neal	41,191	29.2%
5	Buck	11,013	8.2%
6	Cannizzaro	14,408	10.7%
7	Lange	25,148	17.6%
8	Dondero Loop	9,223	6.8%
9	Scheible	13,433	6.6%
10	Donate	31,247	22.7%
11	Harris	17,968	12.4%
12	Hardy	11,740	7.4%
13	Ratti	26,273	18.3%
14	Hansen	15,597	10.8%
15	SeEVERS Gansert	14,338	9.9%
16	Kieckhefer	12,799	8.5%
17	Settelmeyer	8,131	5.9%
18	Hammond	9,724	6.3%
19	Goicoechea	13,486	8.5%
20	Pickard	9,900	6.1%
21	Ohrenschall	37,490	25.4%
State Total		435,757	14.0%



Note: The population database is derived from the 2020 Census Public Law 94-171 Redistricting Data as provided by the U.S. Census Bureau and validated by the Legislative Counsel Bureau.

Racial population data is based on self-identification. Respondents have the option of selecting one or more races. Hispanic or Latino is reported as a language group, separately.