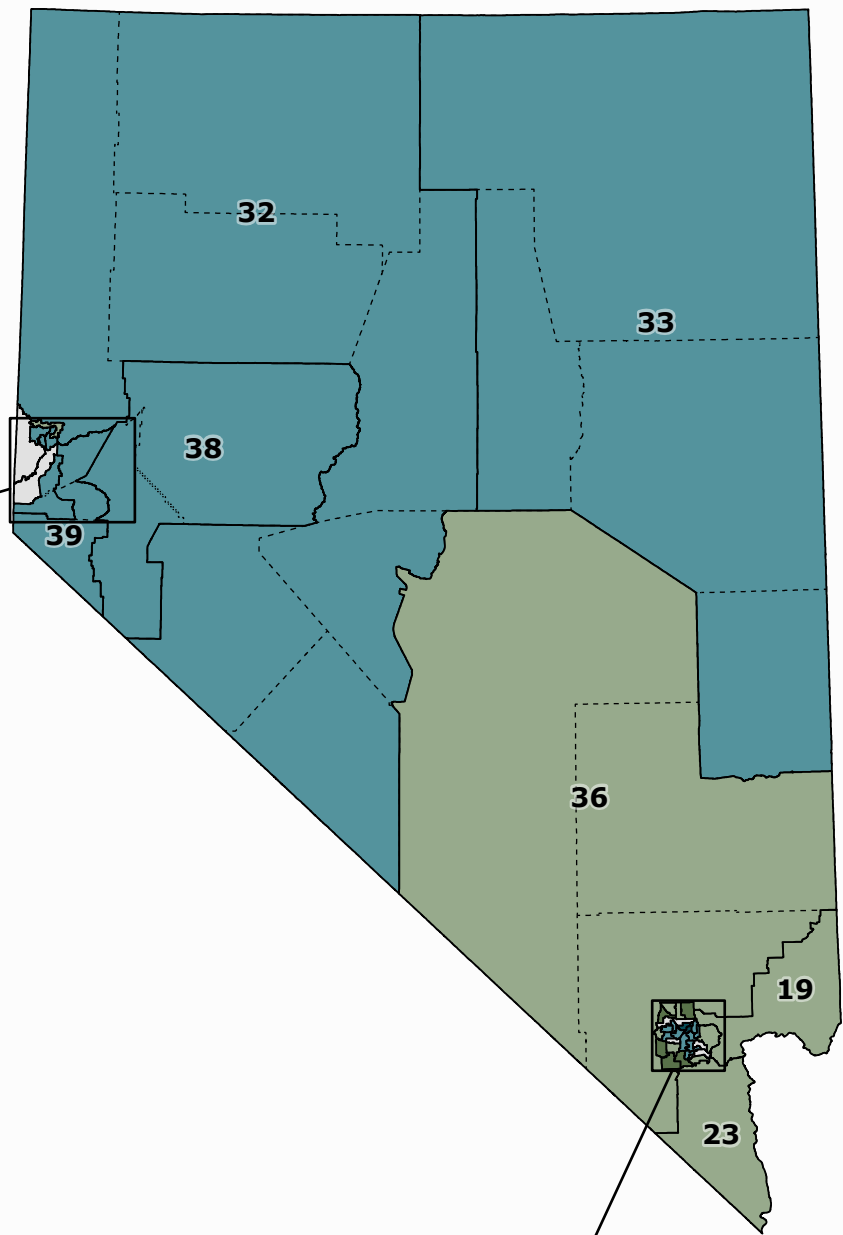
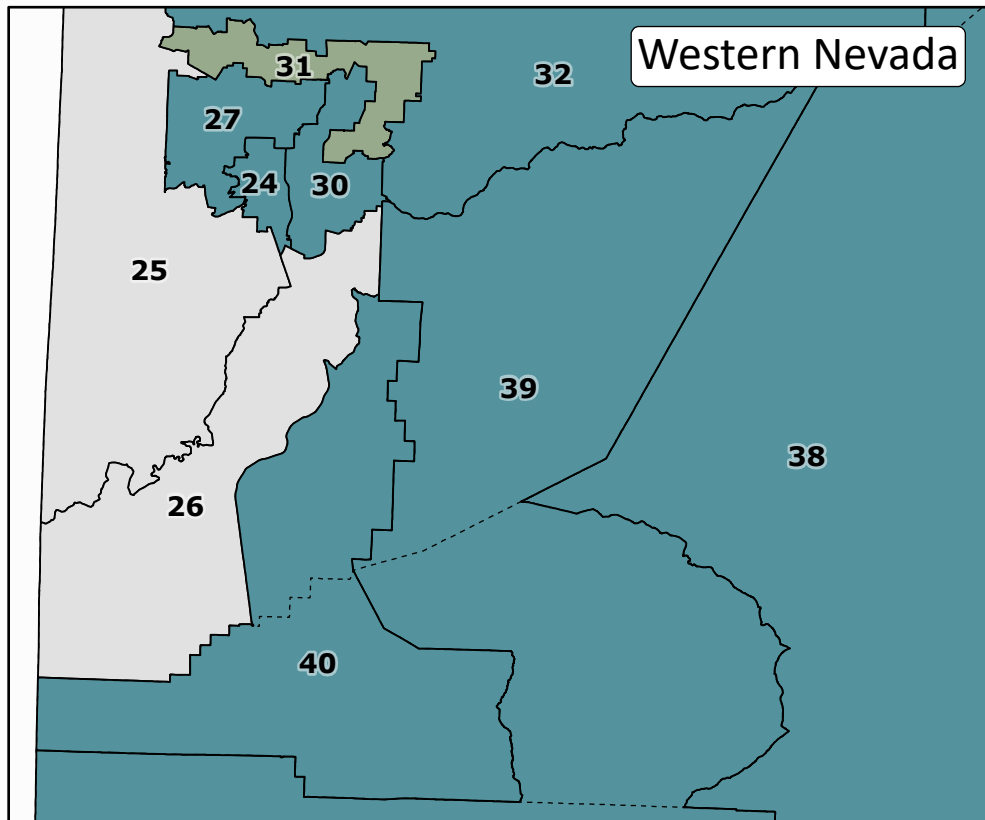


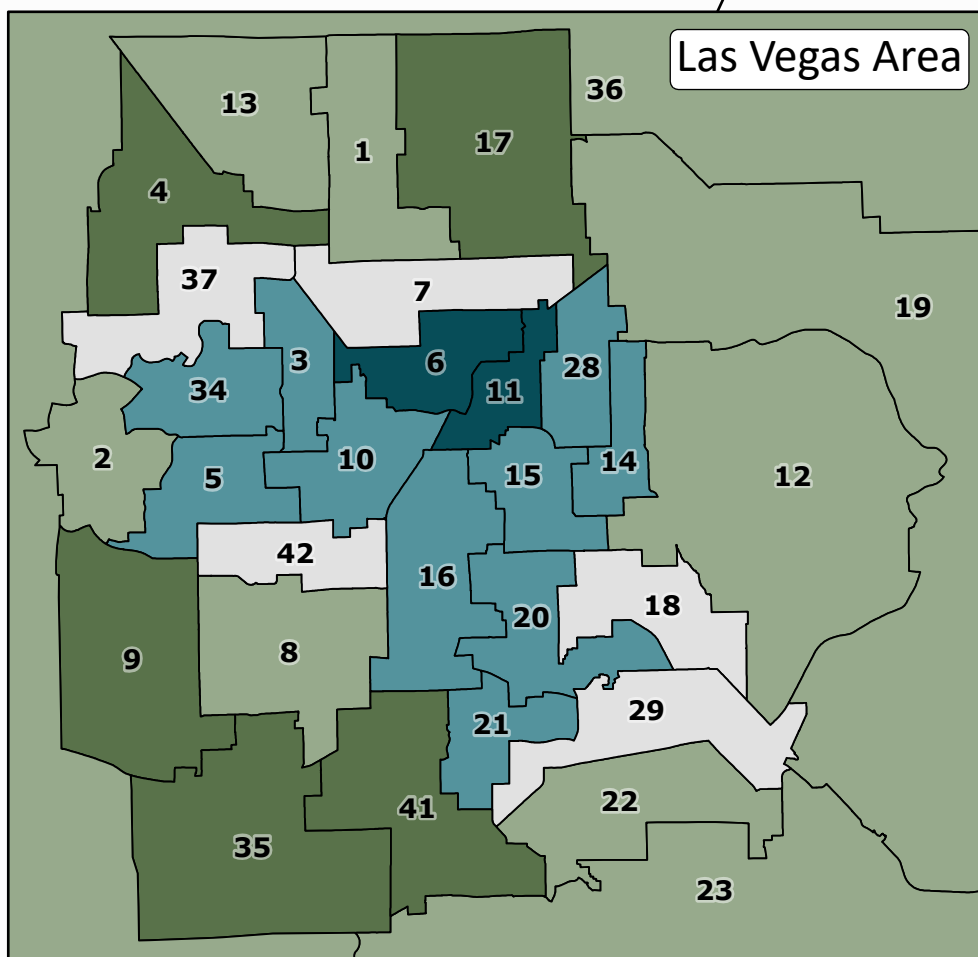
Population Deviation Nevada Assembly Districts

2018 ACS Estimates



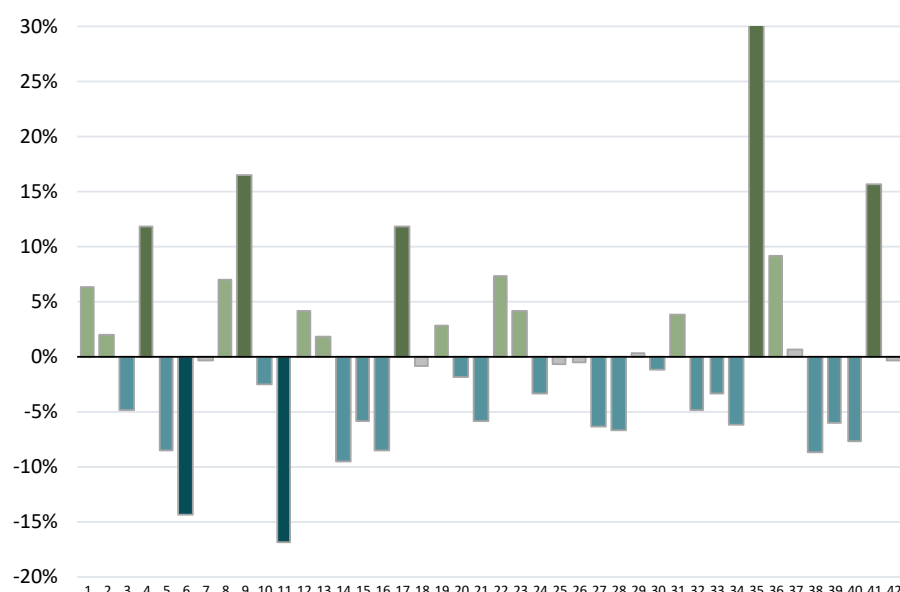
Legend

- County Borders
- > +10%: Districts 4, 9, 17, 35, 41
- +1% to +10%: Districts 1, 2, 8, 12, 13, 19, 22, 23, 31, 36
- 1% to +1%: Districts 7, 18, 25, 26, 29, 37, 42
- 10% to -1%: Districts 3, 10, 14, 15, 16, 20, 21, 24, 27, 28, 30, 32, 33, 34, 38, 39, 40
- < -10%: Districts 6, 11



District	Incumbent	2018 Population Estimate*	2018 Ideal Population*	Population Deviation (from ideal)	2010 Population
1	Daniele Monroe-Moreno	74,015	69,592	6.36%	64,549
2	Heidi Kasama	71,016	69,592	2.05%	64,218
3	Selena Torres	66,196	69,592	-4.88%	64,342
4	Richard McArthur	77,815	69,592	11.82%	64,547
5	Brittney Miller	63,616	69,592	-8.59%	64,000
6	Shondra Summers-Armstrong	59,595	69,592	-14.37%	64,309
7	Cameron (C.H.) Miller	69,352	69,592	-0.34%	64,474
8	Jason Frierson	74,410	69,592	6.92%	64,149
9	Steve Yeager	81,040	69,592	16.45%	64,511
10	Rochelle T. Nguyen	67,790	69,592	-2.59%	64,382
11	Bea Duran	57,853	69,592	-16.87%	64,434
12	Susie Martinez	72,466	69,592	4.13%	64,333
13	Tom Roberts	70,890	69,592	1.87%	64,163
14	Maggie Carlton	63,002	69,592	-9.47%	64,054
15	Howard Watts	65,496	69,592	-5.89%	64,359
16	Cecelia González	63,667	69,592	-8.51%	64,081
17	Claire Thomas	77,852	69,592	11.87%	64,312
18	Venicia Considine	69,012	69,592	-0.83%	64,294
19	Annie Black	71,602	69,592	2.89%	64,631
20	David Orentlicher	68,280	69,592	-1.89%	64,304
21	Elaine Marzola	65,457	69,592	-5.94%	64,340
22	Melissa Hardy	74,662	69,592	7.29%	64,518
23	Glen Leavitt	72,503	69,592	4.18%	64,215
24	Sarah Peters	67,305	69,592	-3.29%	64,442
25	Jill Tolles	69,062	69,592	-0.76%	64,127
26	Lisa Krasner	69,264	69,592	-0.47%	64,301
27	Teresa Benitez-Thompson	65,209	69,592	-6.30%	64,335
28	Edgar Flores	64,888	69,592	-6.76%	64,281
29	Lesley E. Cohen	69,776	69,592	0.26%	64,460
30	Natha C. Anderson	68,817	69,592	-1.11%	64,132
31	Jill Dickman	72,254	69,592	3.83%	64,463
32	Alexis Hansen	66,250	69,592	-4.80%	64,436
33	John C. Ellison	67,278	69,592	-3.33%	64,448
34	Shannon Bilbray-Axelrod	65,318	69,592	-6.14%	64,225
35	Michelle Gorelow	90,855	69,592	30.55%	64,371
36	Gregory T. Hafen II	75,936	69,592	9.12%	64,158
37	Andy Matthews	70,040	69,592	0.64%	64,362
38	Robin L. Titus	63,562	69,592	-8.66%	63,773
39	Jim Wheeler	65,372	69,592	-6.06%	64,091
40	Philip (P.K.) O'Neill	64,269	69,592	-7.65%	64,189
41	Sandra Jauregui	80,461	69,592	15.62%	64,023
42	Tracy Brown-May	69,346	69,592	-0.35%	64,415

Population Deviation (from ideal)



*Data from the U.S. Census Bureau American Community Survey (ACS) 2018 5-year estimates (2014-2018). The estimates are not the official data that will be used for redistricting, but rather provide background information on Nevada's population leading up to redistricting.