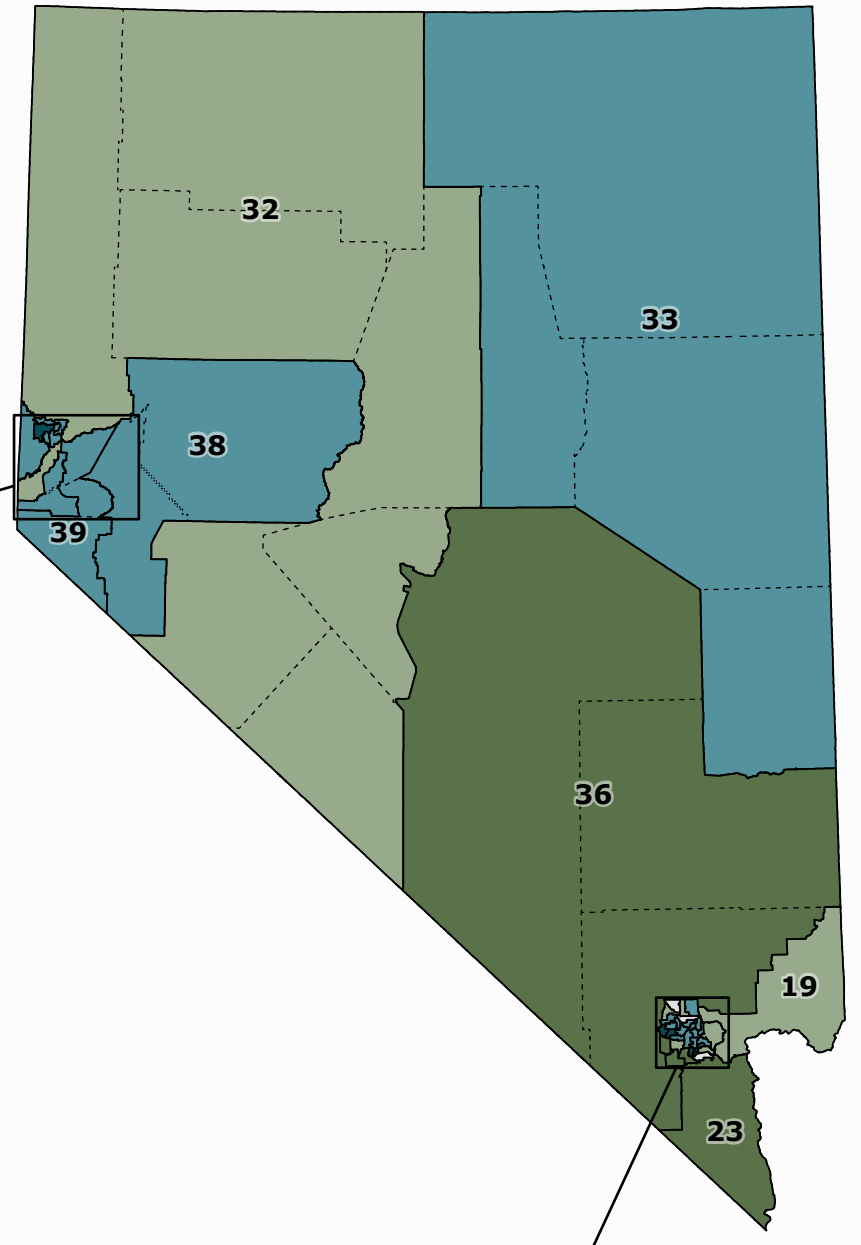
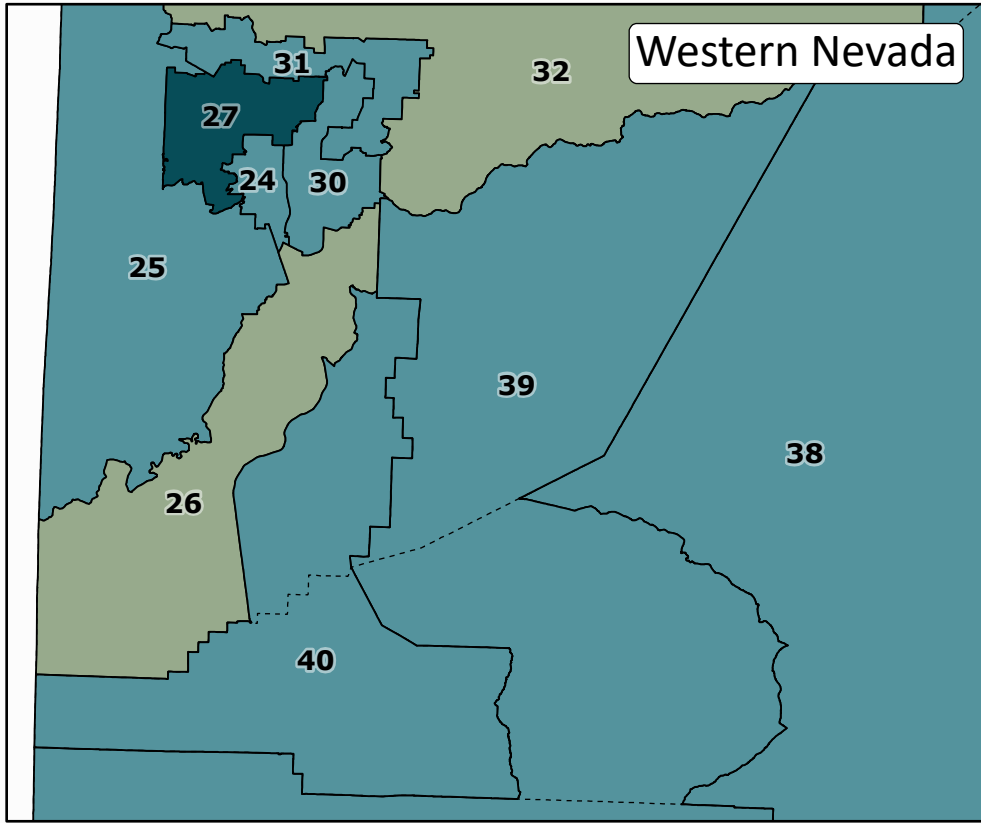


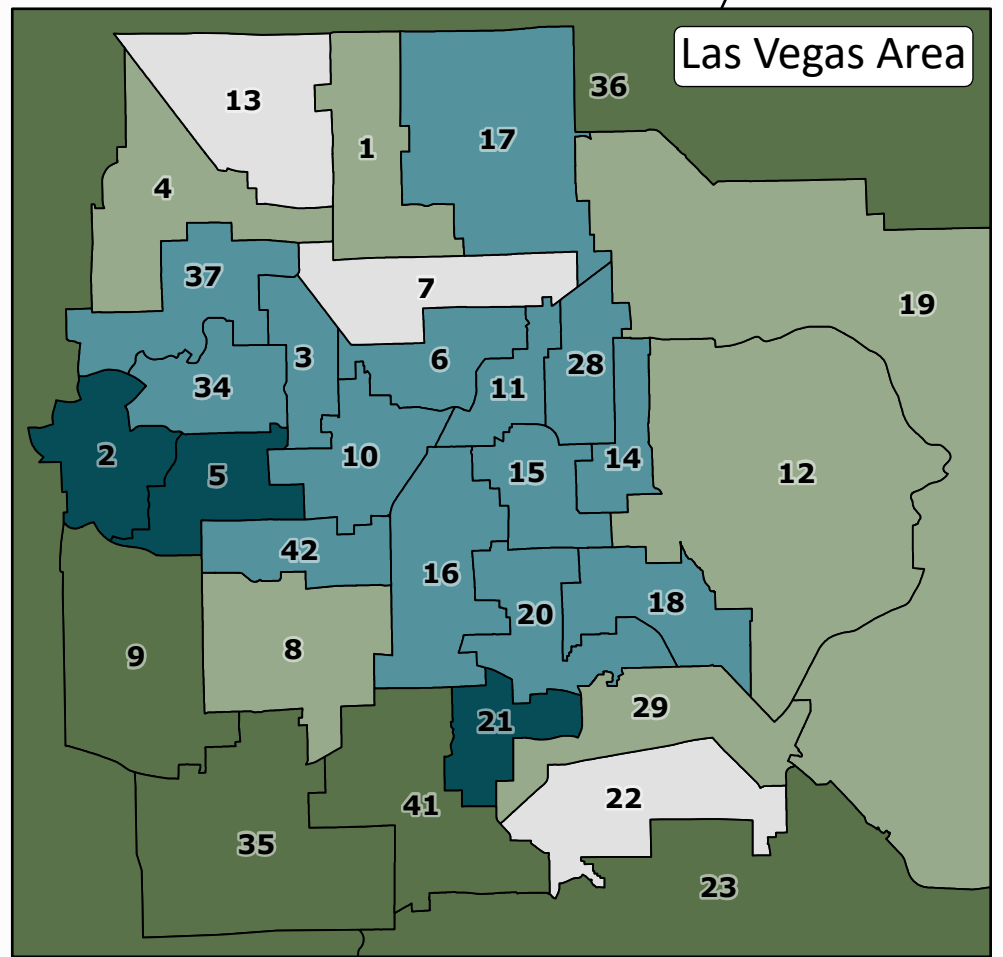
Population Deviation Nevada Assembly Districts

2020 Esri Estimates



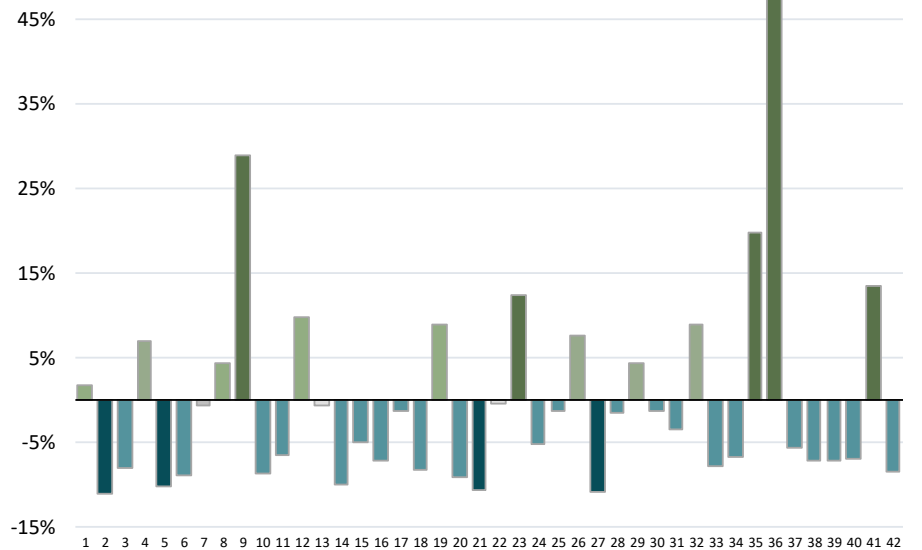
Legend

- County Borders
- > +10% Districts 9, 23, 35, 36, 41
- +1% to +10% Districts 1, 4, 8, 12, 19, 26, 29, 32
- 1% to +1% Districts 7, 13, 22
- 10% to -1% Districts 3, 6, 10, 11, 14, 15, 16, 17, 18, 20, 24, 25, 28, 30, 31, 33, 34, 37, 38, 39, 40, 42
- < -10% Districts 2, 5, 21, 27



District	Incumbent	2020 Population Estimate*	2020 Ideal Population*	Population Deviation (from ideal)	2010 Population
1	Daniele Monroe-Moreno	75,857	74,518	1.80%	64,549
2	Heidi Kasama	66,348	74,518	-10.96%	64,218
3	Selena Torres	68,539	74,518	-8.02%	64,342
4	Richard McArthur	79,694	74,518	6.95%	64,547
5	Brittney Miller	66,894	74,518	-10.23%	64,000
6	Shondra Summers-Armstrong	67,921	74,518	-8.85%	64,309
7	Cameron (C.H.) Miller	74,138	74,518	-0.51%	64,474
8	Jason Frierson	77,852	74,518	4.47%	64,149
9	Steve Yeager	96,099	74,518	28.96%	64,511
10	Rochelle T. Nguyen	68,089	74,518	-8.63%	64,382
11	Bea Duran	69,771	74,518	-6.37%	64,434
12	Susie Martinez	81,849	74,518	9.84%	64,333
13	Tom Roberts	74,143	74,518	-0.50%	64,163
14	Maggie Carlton	67,125	74,518	-9.92%	64,054
15	Howard Watts	70,805	74,518	-4.98%	64,359
16	Cecelia González	69,296	74,518	-7.01%	64,081
17	Claire Thomas	73,533	74,518	-1.32%	64,312
18	Venicia Considine	68,348	74,518	-8.28%	64,294
19	Annie Black	81,224	74,518	9.00%	64,631
20	David Orentlicher	67,805	74,518	-9.01%	64,304
21	Elaine Marzola	66,585	74,518	-10.65%	64,340
22	Melissa Hardy	74,265	74,518	-0.34%	64,518
23	Glen Leavitt	83,849	74,518	12.52%	64,215
24	Sarah Peters	70,601	74,518	-5.26%	64,442
25	Jill Tolles	73,669	74,518	-1.14%	64,127
26	Lisa Krasner	80,298	74,518	7.76%	64,301
27	Teresa Benitez-Thompson	66,461	74,518	-10.81%	64,335
28	Edgar Flores	73,391	74,518	-1.51%	64,281
29	Lesley E. Cohen	77,856	74,518	4.48%	64,460
30	Natha C. Anderson	73,637	74,518	-1.18%	64,132
31	Jill Dickman	71,939	74,518	-3.46%	64,463
32	Alexis Hansen	81,171	74,518	8.93%	64,436
33	John C. Ellison	68,674	74,518	-7.84%	64,448
34	Shannon Bilbray-Axelrod	69,515	74,518	-6.71%	64,225
35	Michelle Gorelow	89,243	74,518	19.76%	64,371
36	Gregory T. Hafen II	112,161	74,518	50.52%	64,158
37	Andy Matthews	70,320	74,518	-5.63%	64,362
38	Robin L. Titus	69,302	74,518	-7.00%	63,773
39	Jim Wheeler	69,297	74,518	-7.01%	64,091
40	Philip (P.K.) O'Neill	69,382	74,518	-6.89%	64,189
41	Sandra Jauregui	84,569	74,518	13.49%	64,023
42	Tracy Brown-May	68,233	74,518	-8.43%	64,415

Population Deviation (from ideal)



*Data from Esri's 2020 Updated Demographics estimates, which include data sources from the U.S. Census Bureau's American Community Survey, administrative records, and private sources. The estimates are not the official data that will be used for redistricting, but rather provide background information on Nevada's population leading up to redistricting.