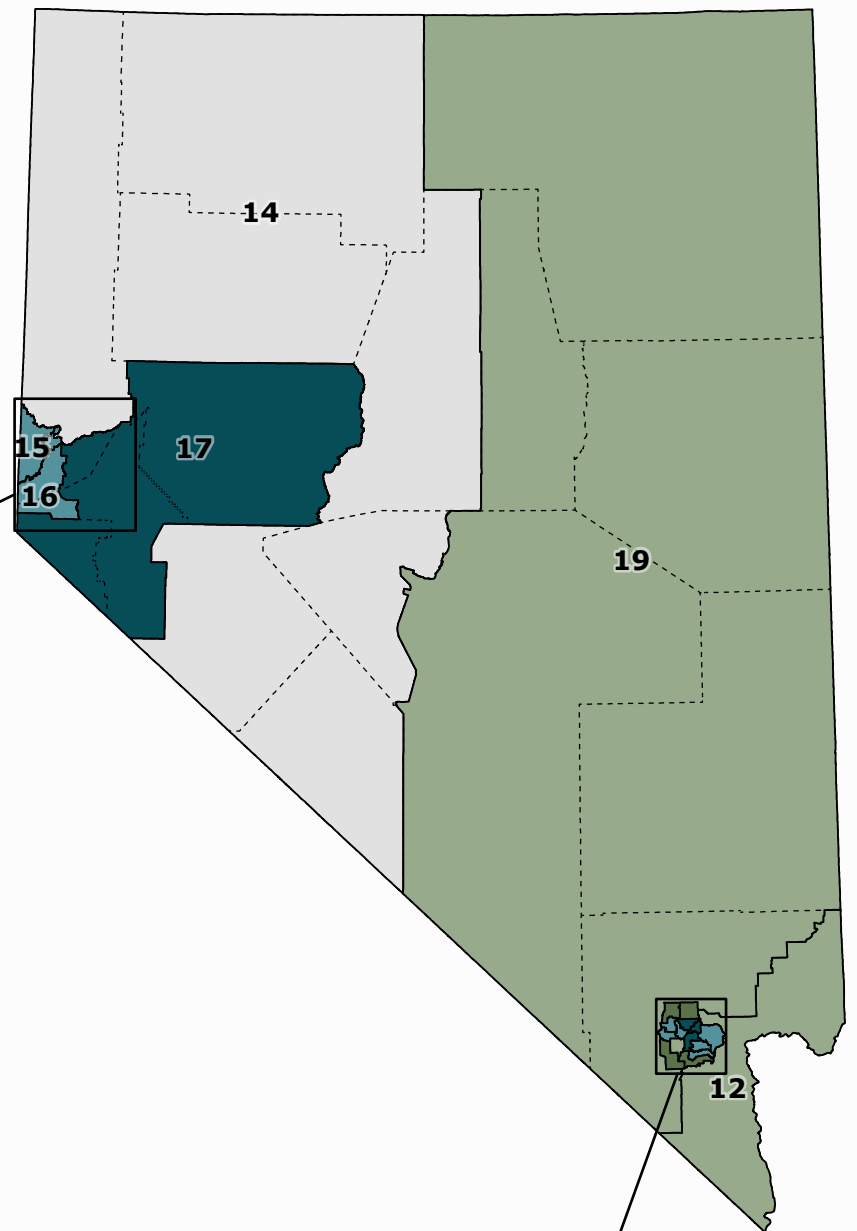
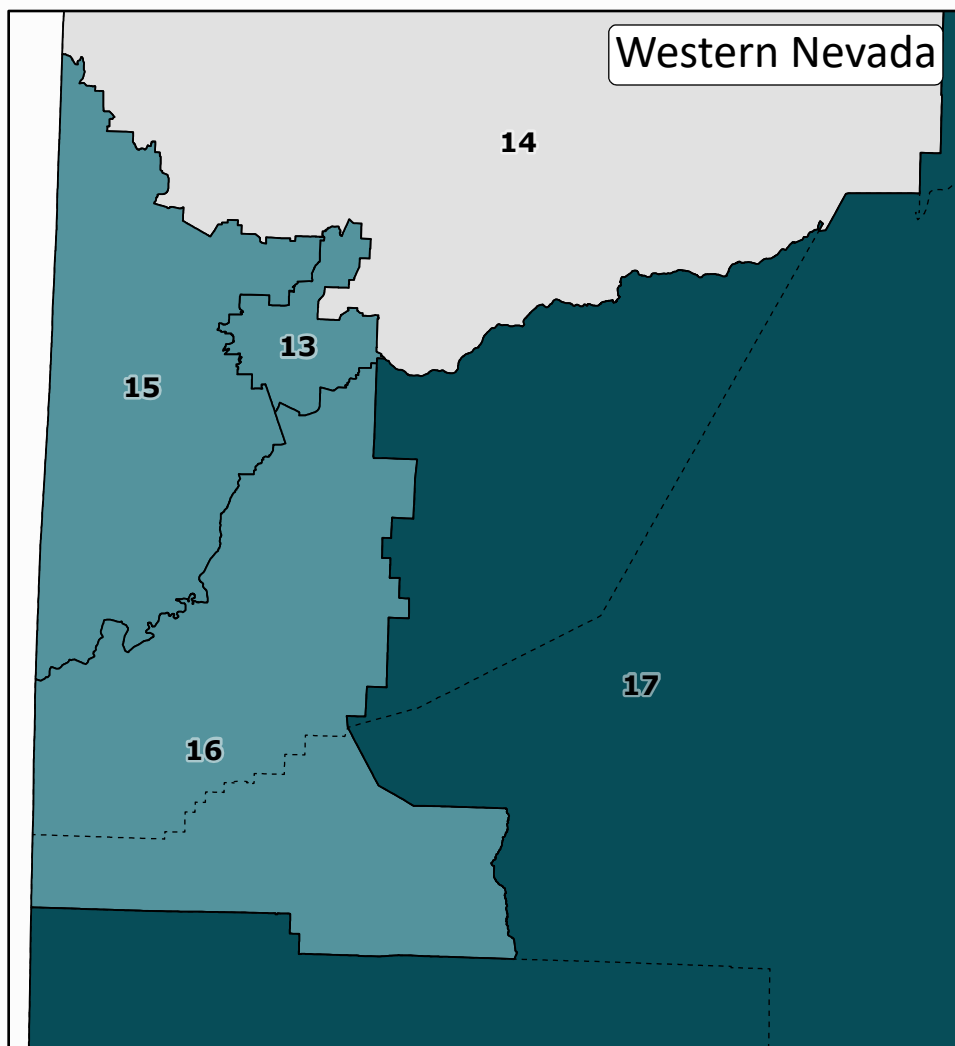
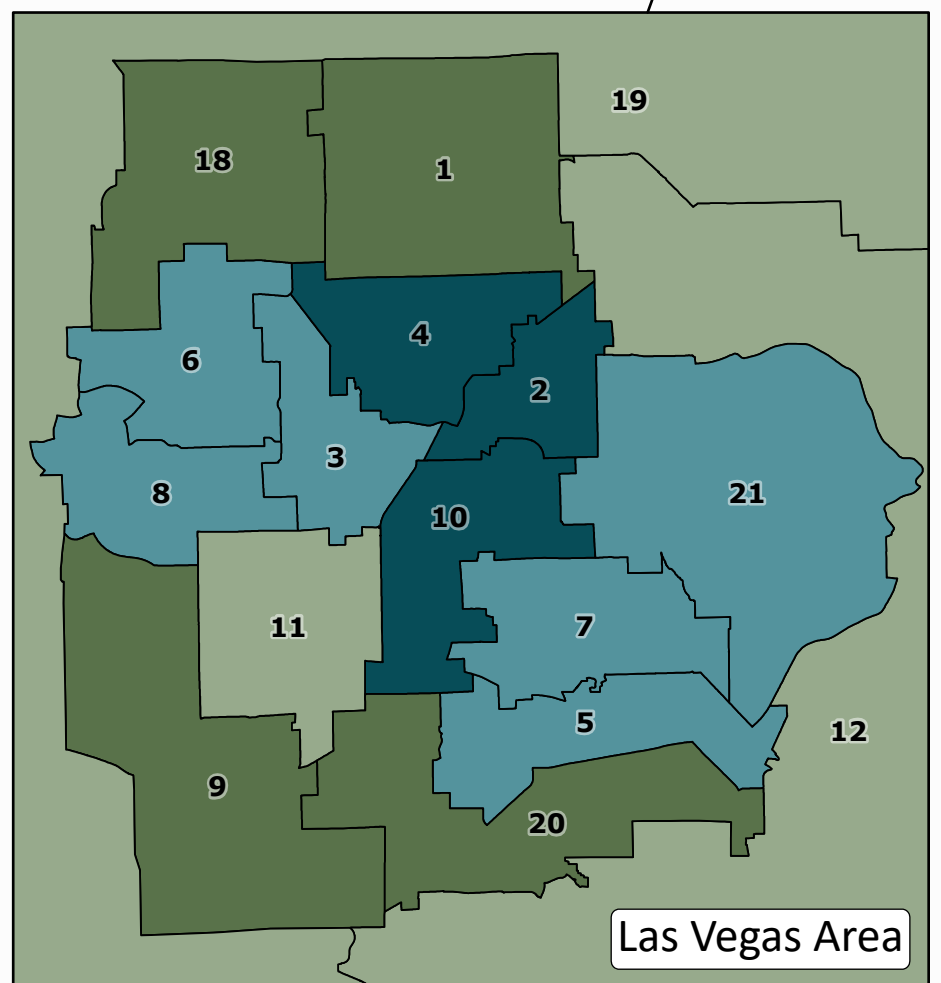
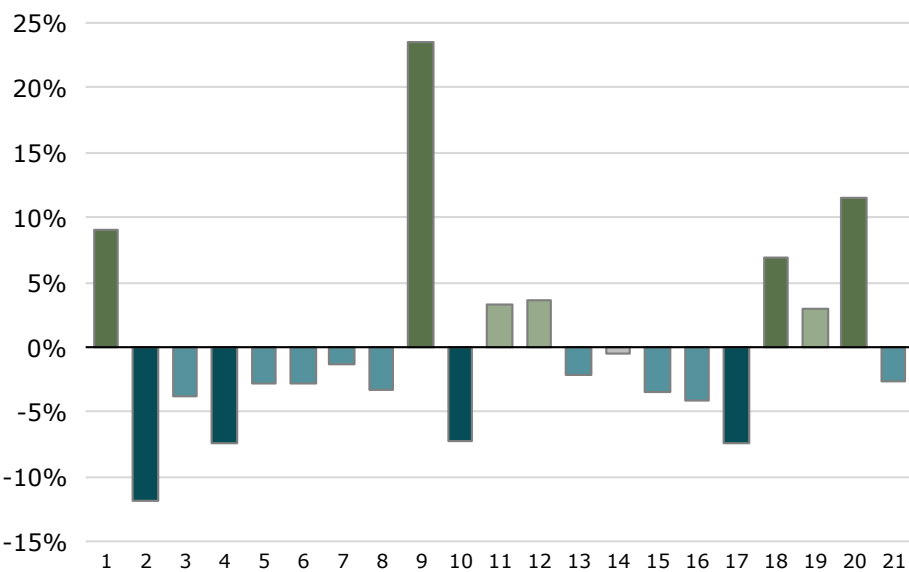


# Population Deviation Nevada Senate Districts

2018 ACS Estimates



### Population Deviation (from ideal)



District	Incumbent	2018 Population Estimate*	2018 Ideal Population*	Population Deviation (from ideal)	2010 Population
1	Pat Spearman	151,867	139,184	9.11%	128,861
2	Moises (Mo) Denis	122,741	139,184	-11.81%	128,715
3	Chris Brooks	133,986	139,184	-3.73%	128,724
4	Dina Neal	128,947	139,184	-7.36%	128,783
5	Carrie Buck	135,233	139,184	-2.84%	128,800
6	Nicole J. Cannizzaro	135,358	139,184	-2.75%	128,587
7	Roberta Lange	137,292	139,184	-1.36%	128,598
8	Marilyn Dondero Loop	134,632	139,184	-3.27%	128,218
9	Melanie Scheible	171,895	139,184	23.50%	128,882
10	Fabian Donate	129,163	139,184	-7.20%	128,440
11	Dallas Harris	143,756	139,184	3.28%	128,564
12	Joseph (Joe) P. Hardy	144,105	139,184	3.54%	128,846
13	Julia Ratti	136,122	139,184	-2.20%	128,574
14	Ira Hansen	138,504	139,184	-0.49%	128,899
15	Heidi Seevers Gansert	134,271	139,184	-3.53%	128,462
16	Ben Kieckhefer	133,533	139,184	-4.06%	128,490
17	James A. Settelmeyer	128,934	139,184	-7.36%	127,864
18	Scott Hammond	148,705	139,184	6.84%	128,710
19	Pete Goicoechea	143,214	139,184	2.90%	128,606
20	Keith F. Pickard	155,123	139,184	11.45%	128,541
21	James Ohrenschall	135,468	139,184	-2.67%	128,387

### Legend

- County Borders
- > +5%: Districts 1, 9, 18, 20
- +1% to +5%: Districts 11, 12, 19
- 1% to +1%: District 14
- 5% to -1%: Districts 3, 5, 6, 7, 8, 13, 15, 16, 21
- < -5%: Districts 2, 4, 10, 17

\*Data from the U.S. Census Bureau American Community Survey (ACS) 2018 5-year estimates (2014-2018). The estimates are not the official data that will be used for redistricting, but rather provide background information on Nevada's population leading up to redistricting.