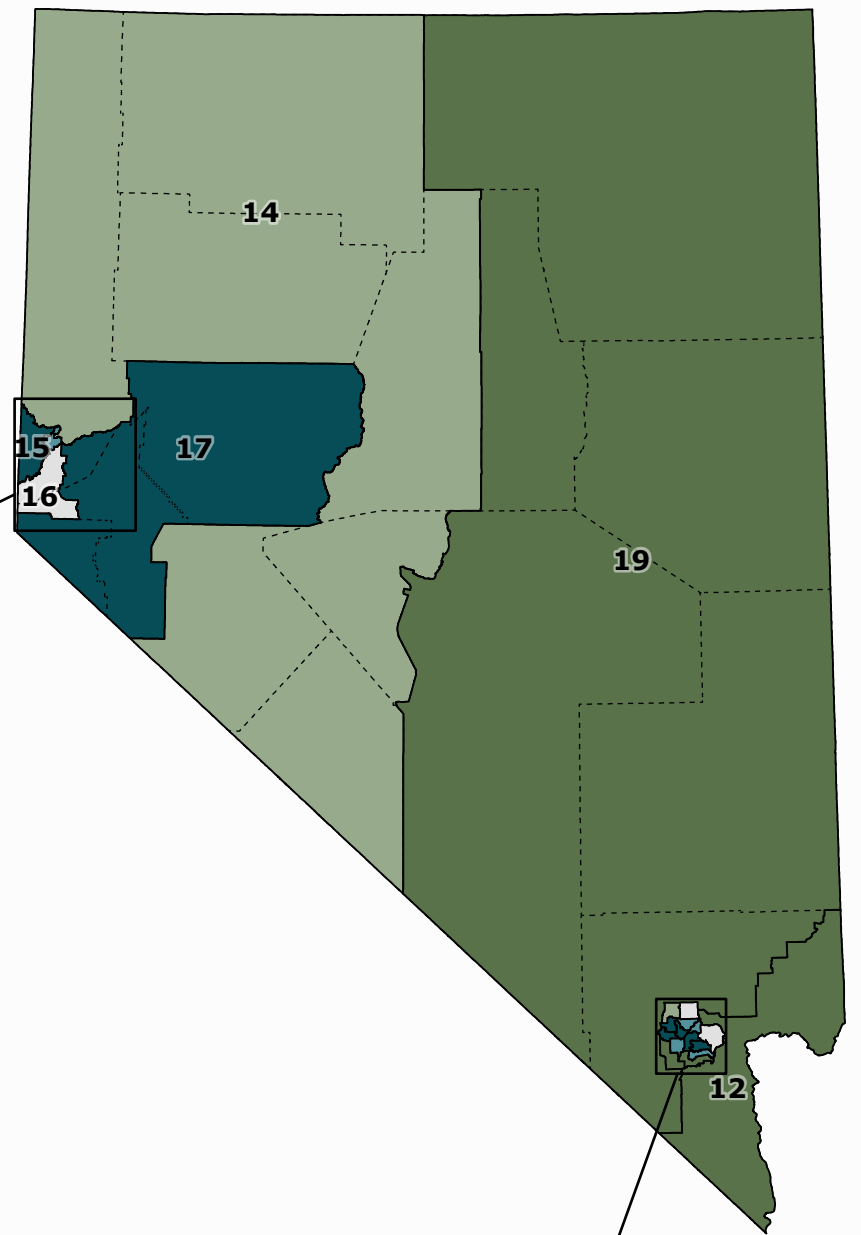
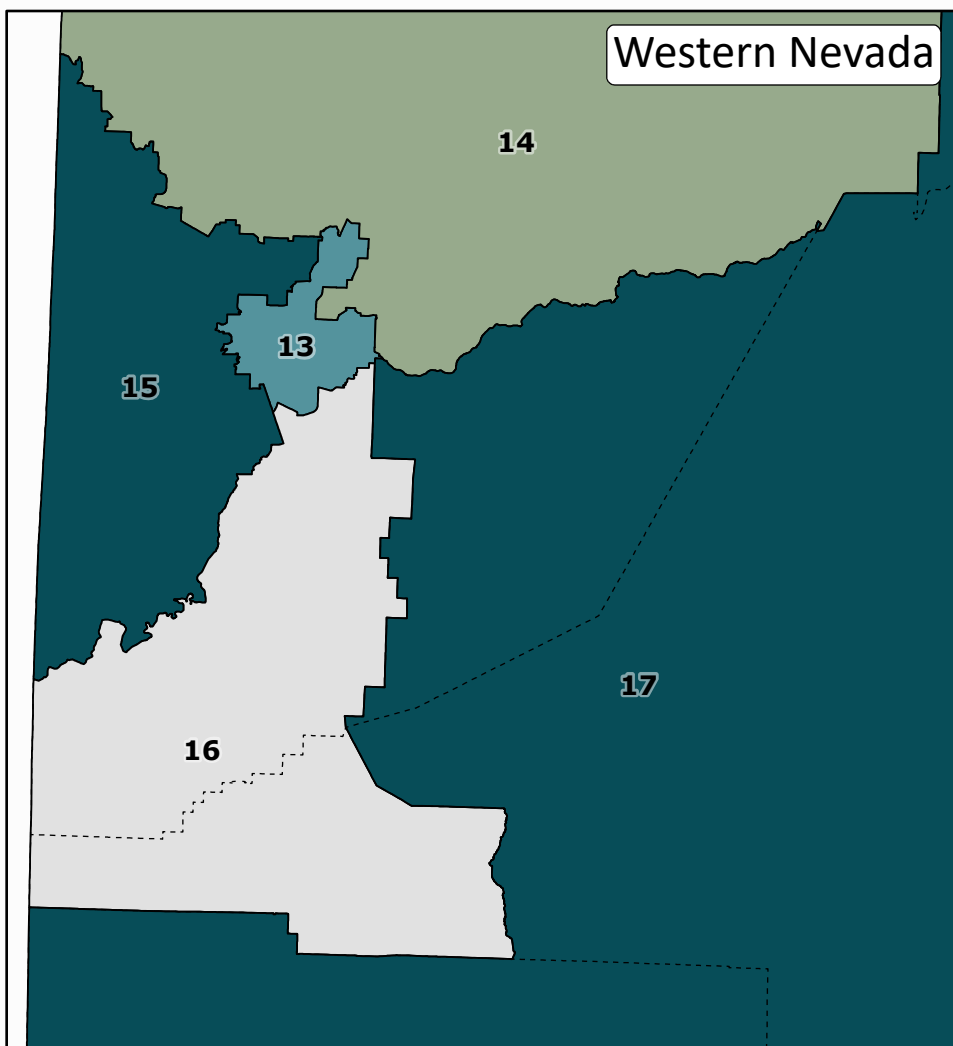
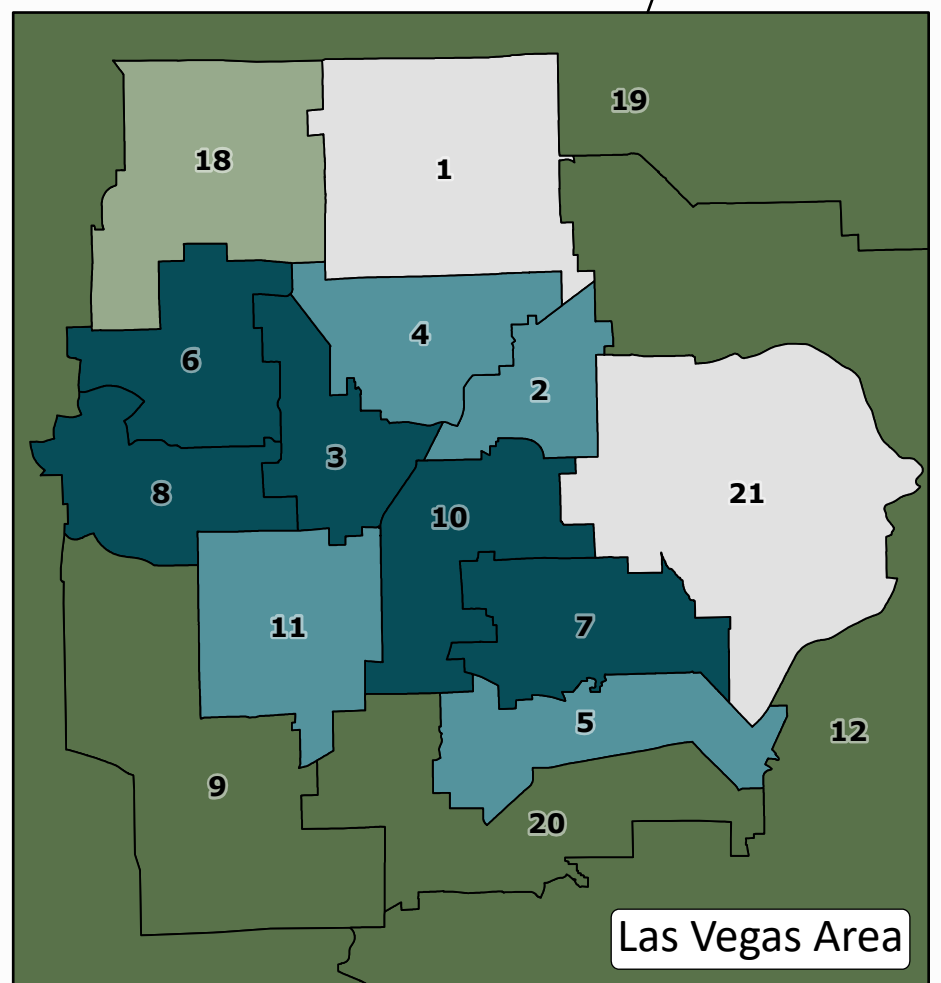
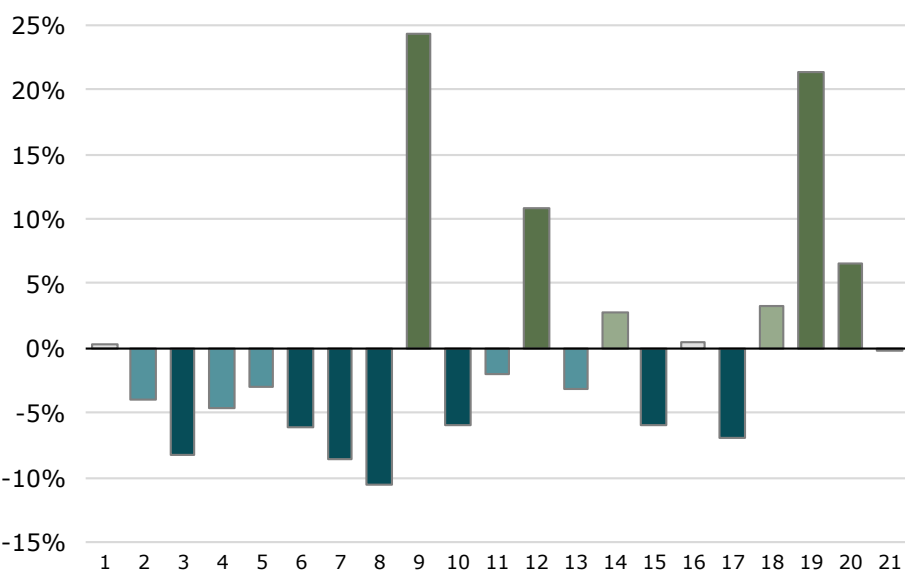


Population Deviation Nevada Senate Districts

2020 Esri Estimates



Population Deviation (from ideal)



District	Incumbent	2020 Population Estimate*	2020 Ideal Population*	Population Deviation (from ideal)	2010 Population
1	Pat Spearman	149,390	149,036	0.24%	128,861
2	Moises (Mo) Denis	143,162	149,036	-3.94%	128,715
3	Chris Brooks	136,628	149,036	-8.33%	128,724
4	Dina Neal	142,059	149,036	-4.68%	128,783
5	Carrie Buck	144,441	149,036	-3.08%	128,800
6	Nicole J. Cannizzaro	139,835	149,036	-6.17%	128,587
7	Roberta Lange	136,153	149,036	-8.64%	128,598
8	Marilyn Dondero Loop	133,242	149,036	-10.60%	128,218
9	Melanie Scheible	185,342	149,036	24.36%	128,882
10	Fabian Donate	140,101	149,036	-6.00%	128,440
11	Dallas Harris	146,085	149,036	-1.98%	128,564
12	Joseph (Joe) P. Hardy	165,073	149,036	10.76%	128,846
13	Julia Ratti	144,238	149,036	-3.22%	128,574
14	Ira Hansen	153,110	149,036	2.73%	128,899
15	Heidi Seevers Gansert	140,130	149,036	-5.98%	128,462
16	Ben Kieckhefer	149,680	149,036	0.43%	128,490
17	James A. Settelmeyer	138,599	149,036	-7.00%	127,864
18	Scott Hammond	153,837	149,036	3.22%	128,710
19	Pete Goicoechea	180,835	149,036	21.34%	128,606
20	Keith F. Pickard	158,834	149,036	6.57%	128,541
21	James Ohrenschall	148,974	149,036	-0.04%	128,387

Legend

- County Borders
- > +5% Districts 9, 12, 19, 20
- +1% to +5% Districts 14, 18
- 1% to +1% Districts 1, 16, 21
- 5% to +1% Districts 2, 4, 5, 11, 13
- < -5% Districts 3, 6, 7, 8, 10, 15, 17

*Data from Esri's 2020 Updated Demographics estimates, which include data sources from the U.S. Census Bureau's American Community Survey, administrative records, and private sources. The estimates are not the official data that will be used for redistricting, but rather provide background information on Nevada's population leading up to redistricting.

