

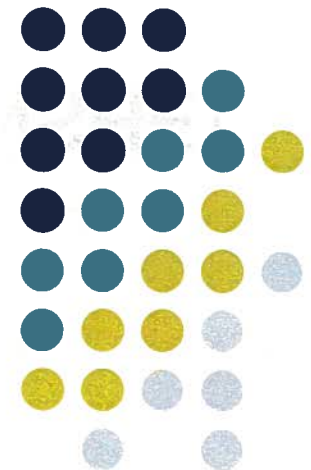
Higher Education in Nevada

Todd Butterworth

Senior Research Analyst

Legislative Counsel Bureau

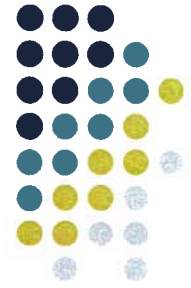
Research Division





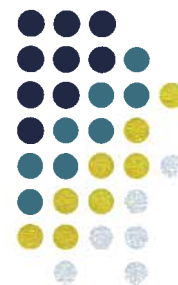
Background

- Postsecondary vs Higher Education: interchangeable terms
- Nevada System of Higher Education (NSHE)
 - Eight member-institutions
- Separate private for-profit and nonprofit institutions



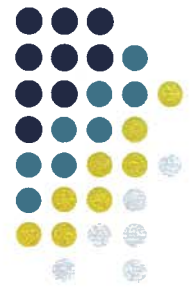
Background: Board of Regents

- NSHE is governed by a 13-member Board of Regents
 - Elected from throughout Nevada
 - Provided for in the *Nevada Constitution (Artcl. 11)*
 - Control and manage higher education
 - Legislative appropriation is required



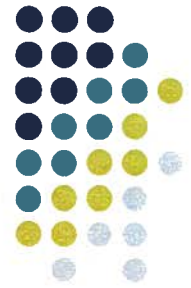
Background: Financial Aid

- No state-level, need-based financial aid program in Nevada
 - NSHE schools offer some aid
- Governor Guinn Millennium Scholarship
 - Merit-based, managed by State Treasurer
 - 40% of tobacco settlement revenues
 - 2011 Legislature appropriated \$10 million
- Prepaid Tuition/College Savings Programs



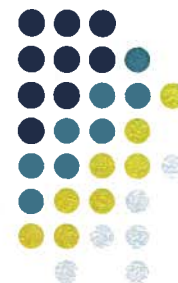
2011 Legislative Session

- **S.B. 449**
 - Allowed program-specific tuition and fee rates
 - Annual report on program costs and demand
 - Biennial report on college completion and economic impact
- **A.B. 220**
 - Board should examine and audit the use of facilities, resources and staff at each institution
 - Meet education needs efficiently/economically



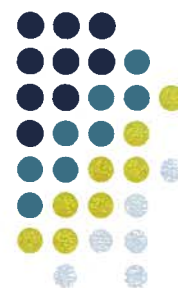
2012 Interim

- S.B. 374 – interim study of higher education funding
 - Proposed new formula for funding allocation to NSHE institutions
 - Proposed separate performance-based funding pool, beginning at 5%, growing to 20%, over 4 years



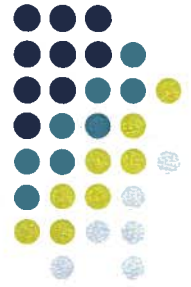
2013 Legislative Session

- Higher education Bill Draft Requests, topics include:
 - Trust Account for the Education of Dependent Children
 - P-16 Advisory Council
 - Membership of the Board of Regents
 - Tuition charges
 - Allowing academic credit for military training



National Hot Topics

- Higher Education Act
 - Expires in 2013
 - Federal student aid may be overhauled?
- Online Courses
 - MOOC – Massive Open Online Course
 - 100,000 or more students in a single class
 - Some state schools awarding credit for MOOCs
 - Players include: Udacity, Coursera, EdX



National **Hot Topics**

- Math and English Remediation
 - Alternative is a standard college class with increased support– more class hours or required tutoring

Todd Butterworth

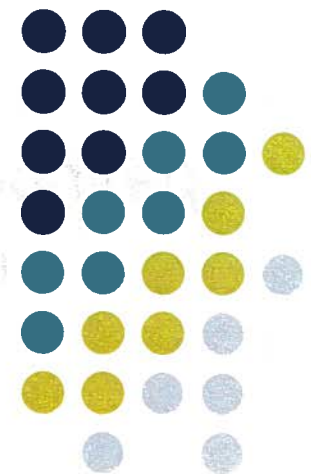
Senior Research Analyst

Legislative Counsel Bureau

Research Division

775-684-6825

Todd.Butterworth@LCB.state.nv.us





Nevada System of Higher Education
Funding Sources for State Supported Operating Budget
 FY 09 and FY 13 (Legislatively Approved Budgets)

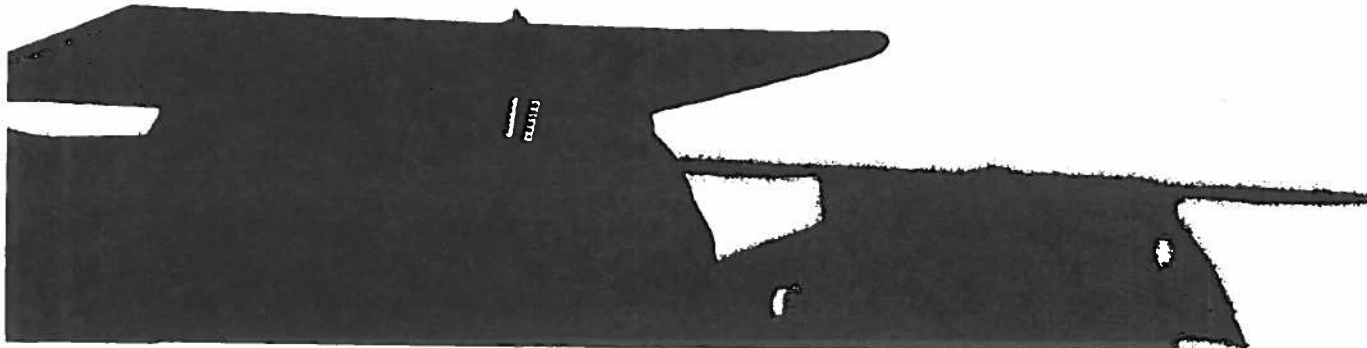
	FY 2008-09*	Percent	FY 2012-13*	Percent	Difference	Change
General Fund	\$ 683,818,577	78.39 %	\$ 472,368,017	64.23 %	\$ (211,450,560)	-14.16 %
Student Revenue	\$ 182,090,622	20.87 %	\$ 257,066,426	34.96 %	\$ 74,975,804	14.08 %
Other**	\$ 6,440,334	0.74 %	\$ 5,983,293	0.81 %	\$ (457,041)	0.08 %
Total	\$ 872,349,533		\$ 735,417,736		\$ (136,931,797)	

	Total Budget	General Fund Support	Student Revenues
FY 09 Total	\$ 872,349,533	\$ 683,818,577	\$ 182,090,622
FY 13 Total	\$ 735,417,736	\$ 472,368,017	\$ 257,066,426
Percent Change	- 15.70 %	- 30.92 %	41.17 %

Notes:

* Legislatively approved amounts

** Other includes federal ag. funds, county extension funds, WICHE (FY 13 only), and other minor revenue sources

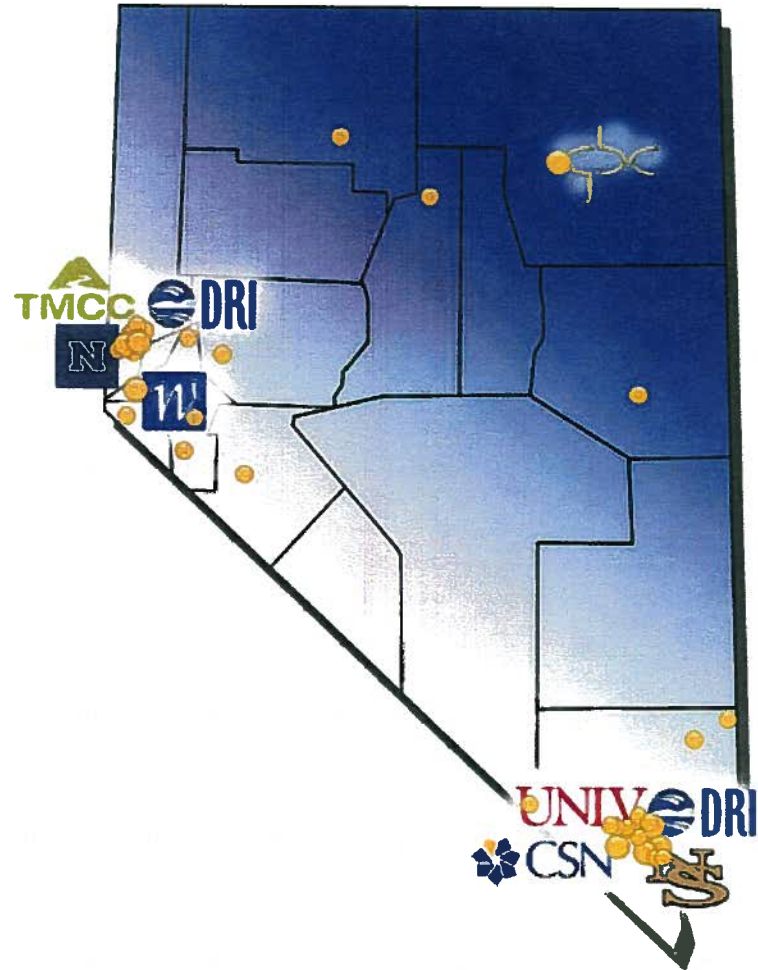




Higher Ed 101
Legislative Briefing Materials
December 13, 2012

NSHE Institutions

- College of Southern Nevada
- Great Basin College
- Truckee Meadows Community College
- Western Nevada College
- Nevada State College
- University of Nevada, Las Vegas
- University of Nevada, Reno
- Desert Research Institute



Governance

Nevada
Board of Regents

Chancellor Dan Klaich
Nevada System of
Higher Education

President
Michael
Richards
College of
Southern
Nevada

President
Mark Curtis
Great Basin
College

President
Maria
Sheehan
Truckee
Meadows
Community
College

President
Carol Lucey
Western
Nevada
College

President
Bart
Patterson
Nevada
State
College

President
Neal
Smatresk
University
of Nevada,
Las Vegas

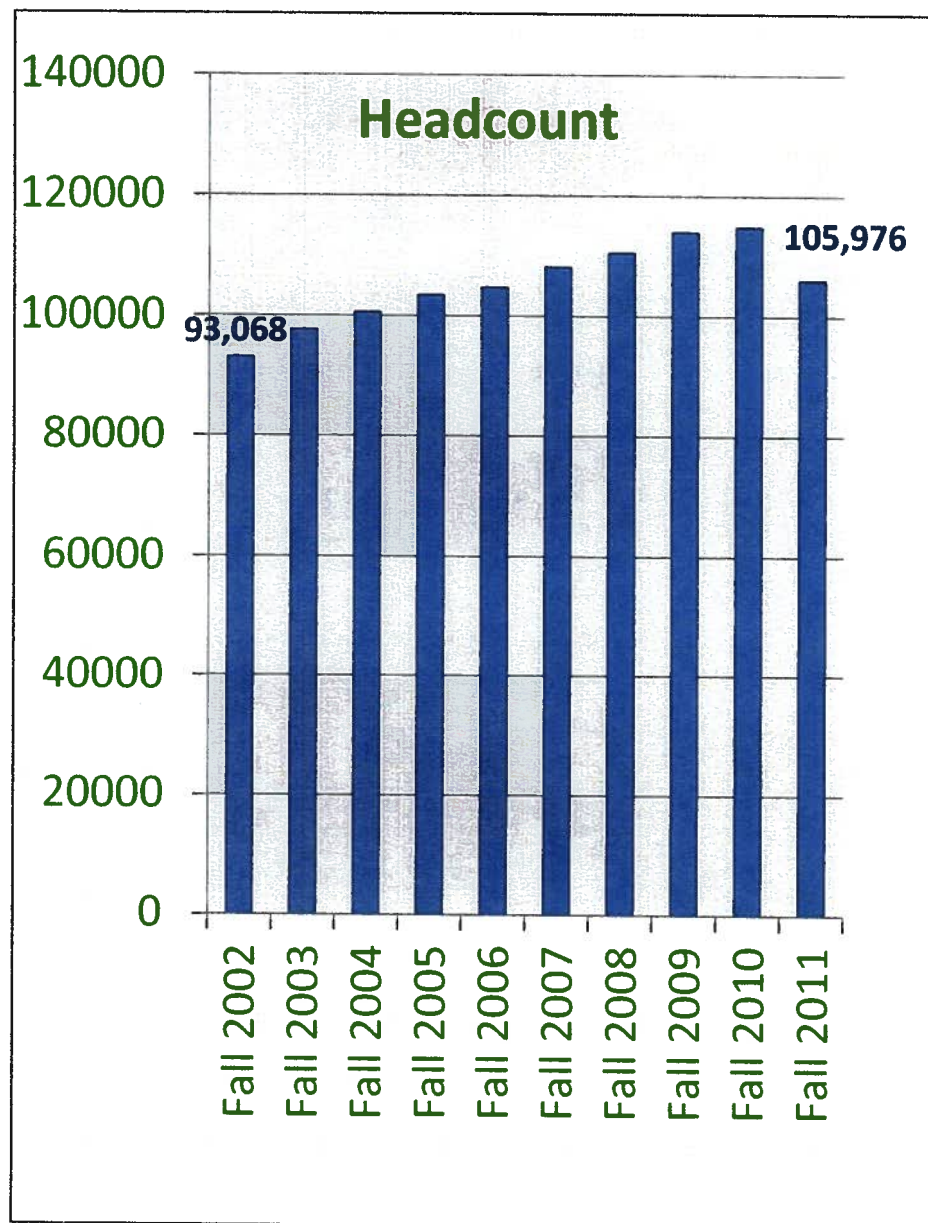
President
Marc
Johnson
University
of Nevada,
Reno

President
Stephen
Wells
Desert
Research
Institute



Enrollment

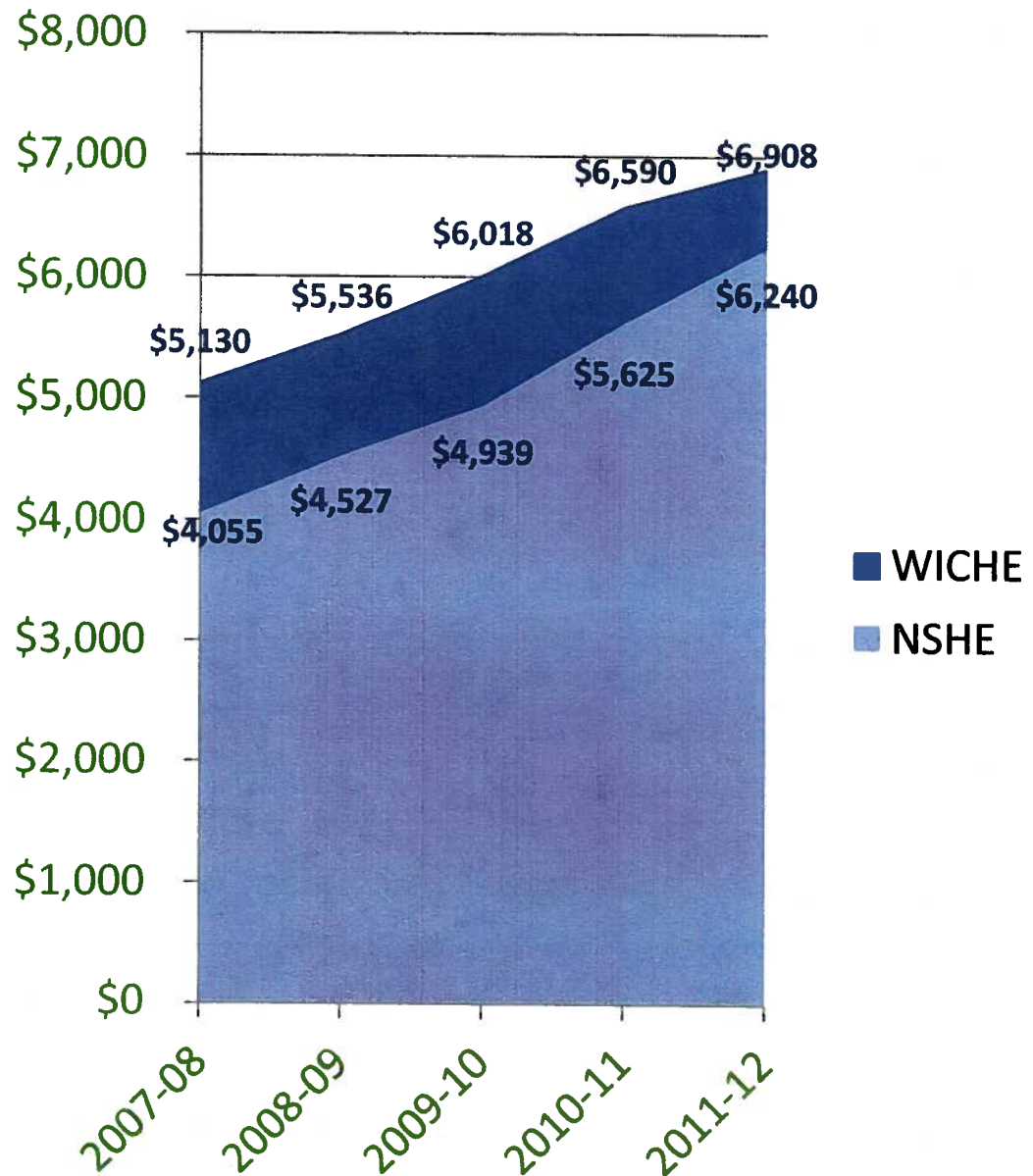
- **Fall 2011 enrollment** : 114,809
- **Ethnicity**
 - Hispanic: 20.0%
 - Asian: 9.4%
 - Black, non-Hispanic: 7.7%
 - Two or More Races: 3.3%
 - Native Hawaiian or Other Pacific Islander: 1.8%
- **Gender**
 - Female: 56.0%
 - Male: 44.0%
- **In-State Residents**: 87.1%
- **Undergraduates**
 - Community Colleges: 100.0%
 - State College: 100.0%
 - Universities: 81.1%



Registration Fees

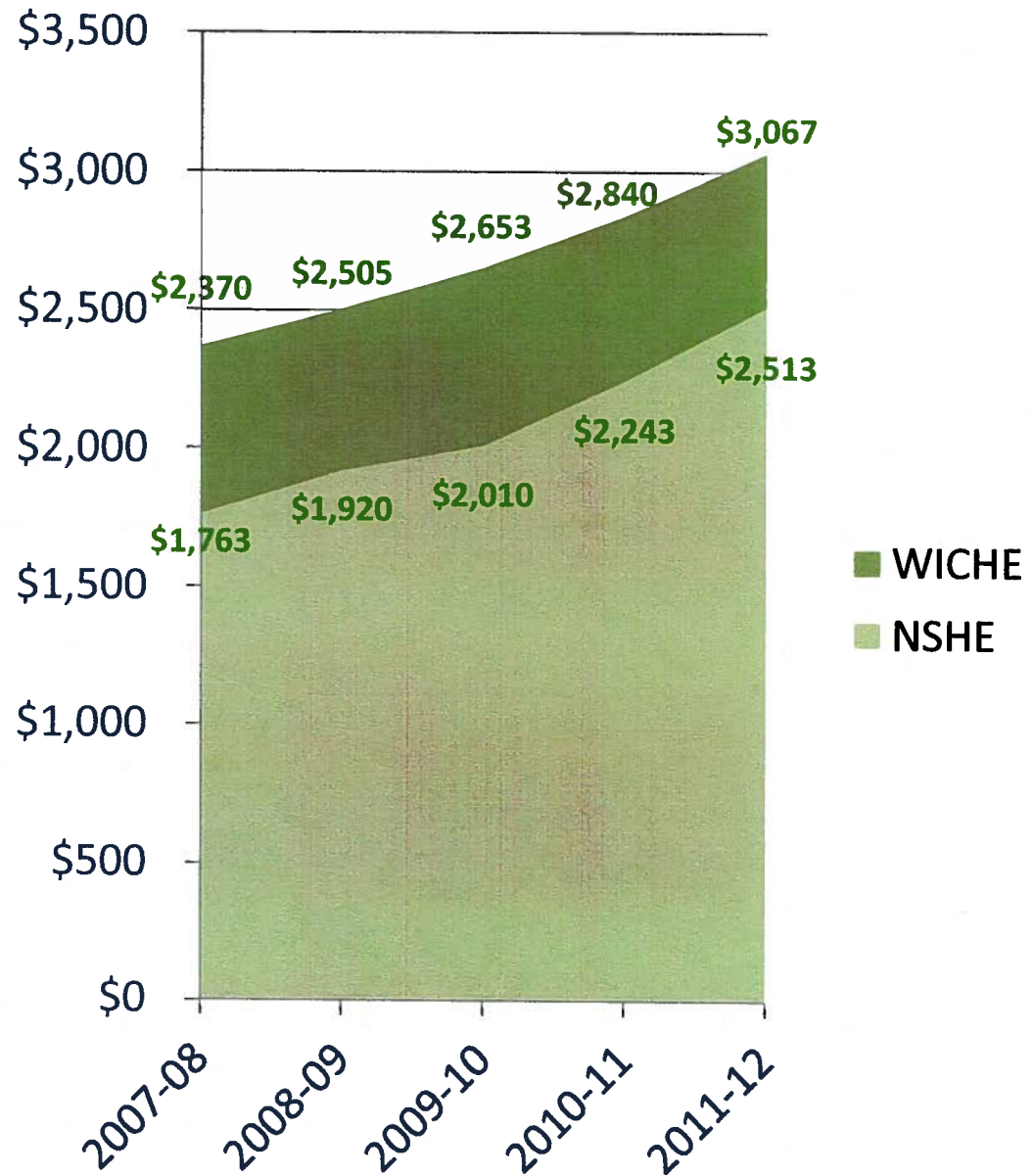
(4-Year Institutions)

- Nevada residents do not pay tuition, only registration fees. Non-residents pay tuition + registration fees.
- Tuition and fees at NSHE universities have remained consistently below the average tuition and fees paid in other western states.



Registration Fees (2-Year Institutions)

- The Board of Regents had a policy of setting fees on the WICHE median of state averages using a three-year lag.
- That policy was abandoned in 2010 due to declining state support and growing pressure to increase fees.

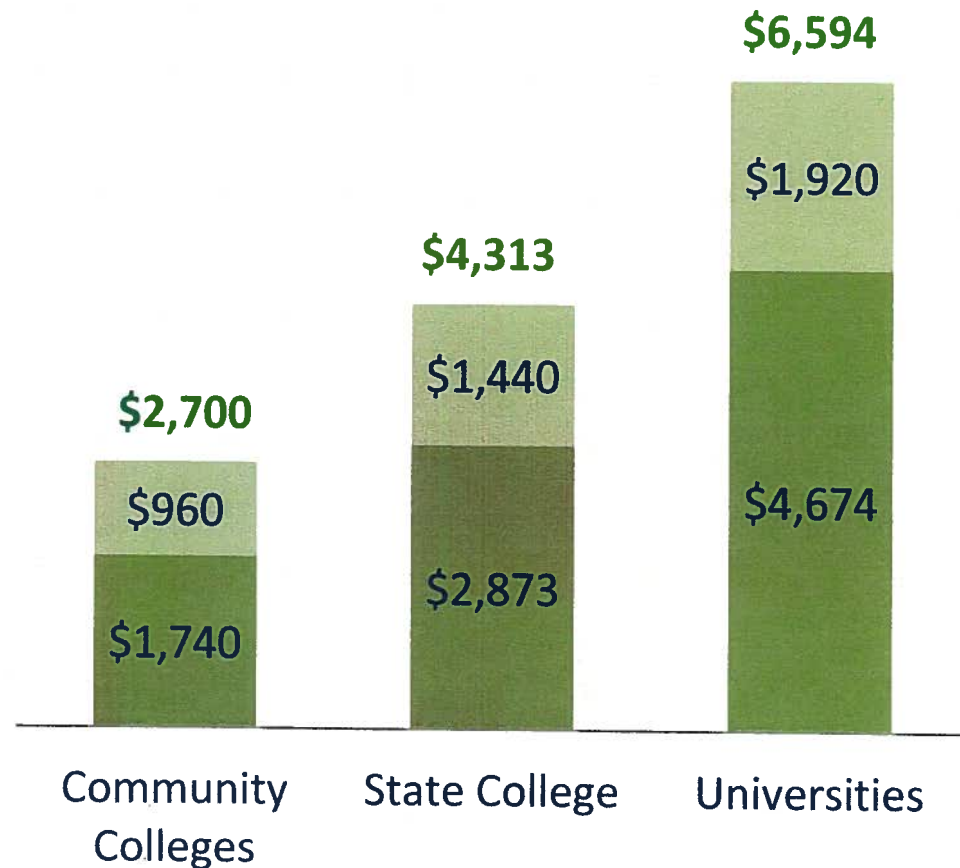


Millennium Scholarship

- The Millennium Scholarship maximum award is 12 credits per semester.
- For the 2012-13 school year, the Millennium Scholarship only covers the 35% of the community college registration and mandatory fees and 33% at the state college and 29% at the two universities.

Tuition & Mandatory Fees covered by Millennium Scholarship

- Maximum Millennium Scholarship
- Uncovered Costs



Student Completion

Graduation Rates (2010-2011)

• CSN	11%
• GBC	23%
• TMCC	17%
• WNC	19%
• NSC	22%
• UNLV	39%
• UNR	51%

Preliminary 2010-2011 IPEDS Graduation Rates as of 10/18/12.



Degrees & Certificates Awarded (2010-2011)



NSHE Strategic Directions

Success

- Increase Student Achievement, Retention and Success

Accountability

- Increase Transparency, Accountability and Performance

Innovation

- Continuous Review and Revision of Programs to Support Innovation and Responsiveness

Accessibility

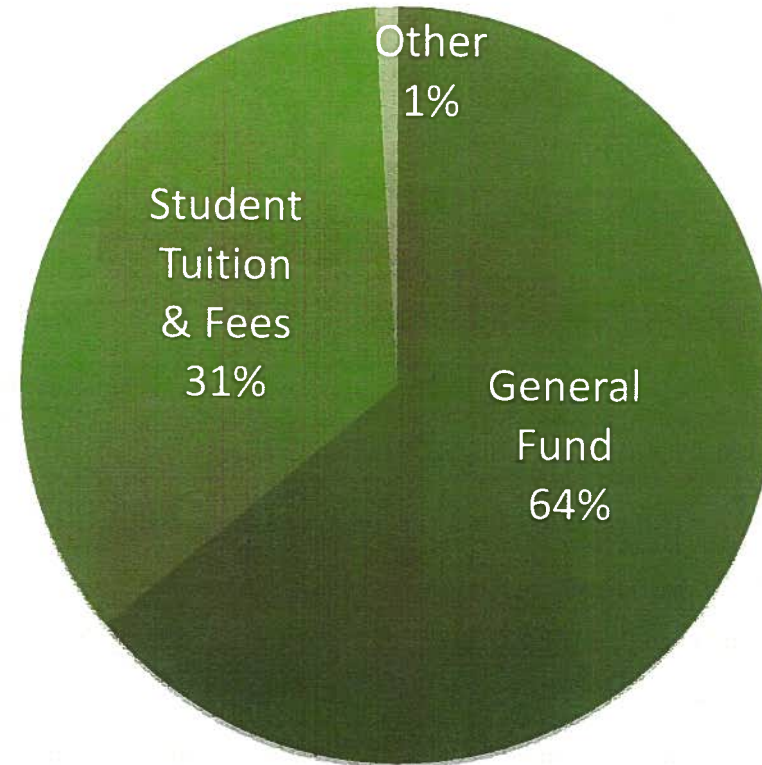
- Ensure that Higher Education is Accessible and Affordable for All Nevadans



State Budget Funding Sources

FY 2012-2013

- State supported operating budget: **\$735.4 M**
- General fund: **\$472.4 M**
- Student revenue: **\$257.1 M**



Current Funding Formula

- Since 1968, the Nevada Legislature has used a series of enrollment-driven formulas to fund higher education.

Complex

Inequitable

Enrollment
Focused

Outdated

Input
Driven



Proposed Funding Formula

- Interim committee approved in August 2012
- Next steps:
 - Performance Pool Committee
 - 2013 Executive Budget/Legislative Budget process

Equity

Simple &
Transparent

Efficiency &
Entrepreneurialism

Accountability
Metrics

Aligned with State
of Nevada

Output Focused



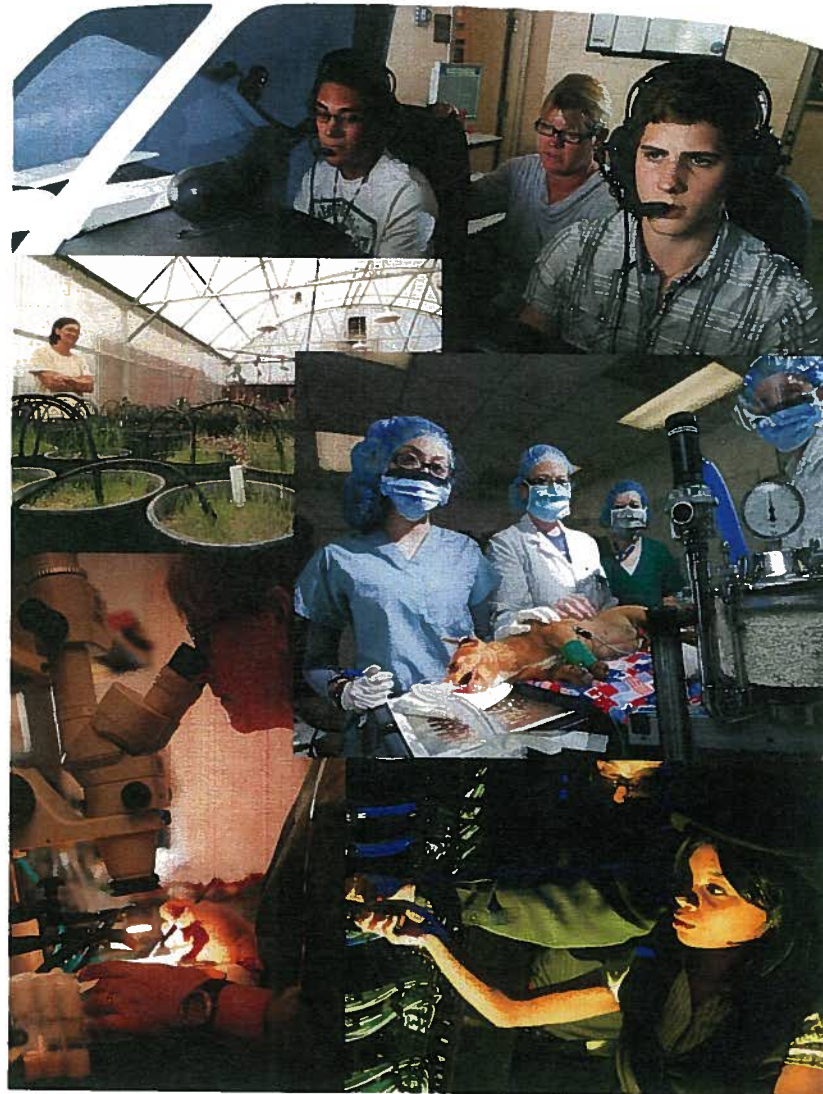
NSHE Budget Request

- **Flat budget:** \$473 M/year
- **Restoration of employee pay cuts/furloughs**
 - FY14: \$41.6 M
 - FY15: \$51.2 M
- **Formula implementation mitigation funds:** ~ \$13 M/year
- **Knowledge Fund:** \$10 M total
- **Capital Improvement Program request:** \$184.3 M
(\$130.2 state + \$54.1 other)



Economic & Workforce Development

- AB 449 from the 2011 Legislative Session requires NSHE involvement.
- Chancellor Klaich:
 - Member, Board of Economic Development
 - Member, Governor's cabinet
- Training students to become workforce ready in various certificate programs
- NSHE and its faculty provide research and expertise to enhance statewide goals.



Contact Us

Dan Klaich

Chancellor

(775) 784-4905

daniel_klaich@nshe.nevada.edu

Renee Yackira

Vice Chancellor for Administration &
Operations

(702) 889-8426

renee_yackira@nshe.nevada.edu

Constance J. Brooks

Director of Government Relations

(702) 889-8426

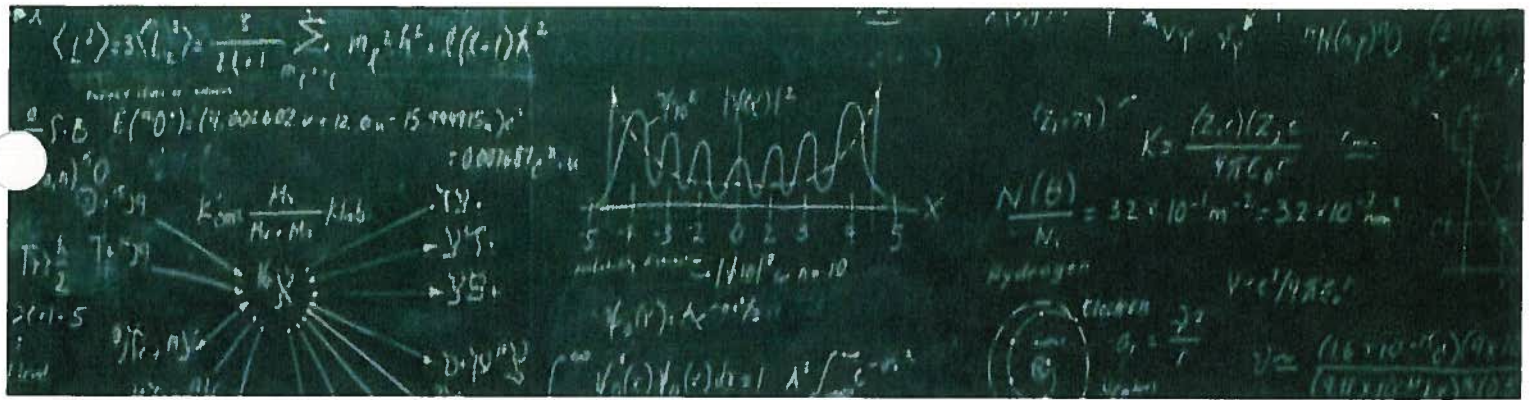
(702) 379-5340 (cell)

constance_brooks@nshe.nevada.edu



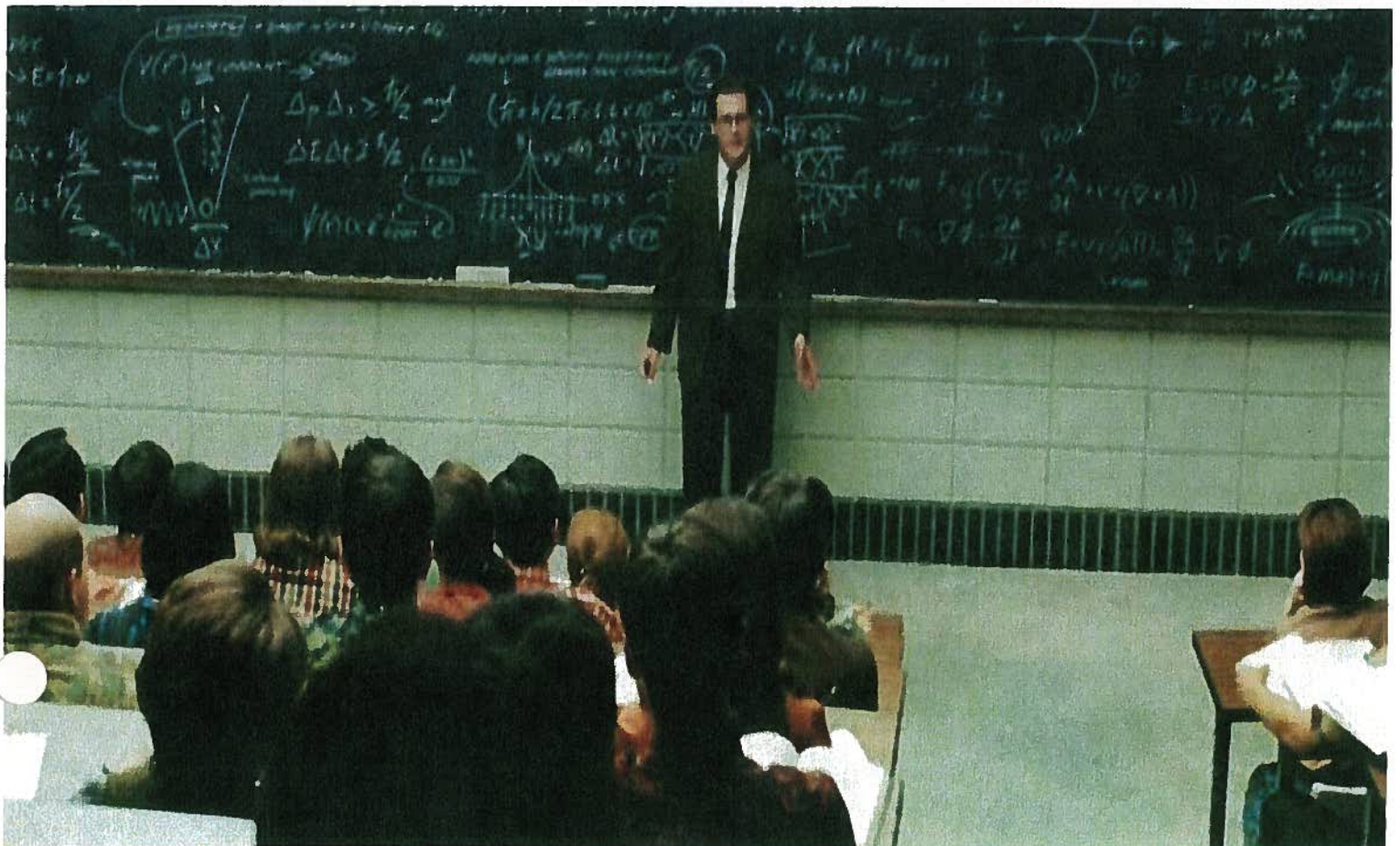
Questions ?





Strategic Directions for the Nevada System of Higher Education

December 2011



Background and Overview

In its recent publication, *Complete to Compete: from Information to Action*, the National Governors Association identified the “triple threat” facing public colleges and universities nationwide:

1. A greater percentage of jobs requiring postsecondary education;
2. A continuing squeeze in state budgets, particularly from the cost of health care; and
3. A growing population of students from groups that have historically not successfully completed postsecondary programs.

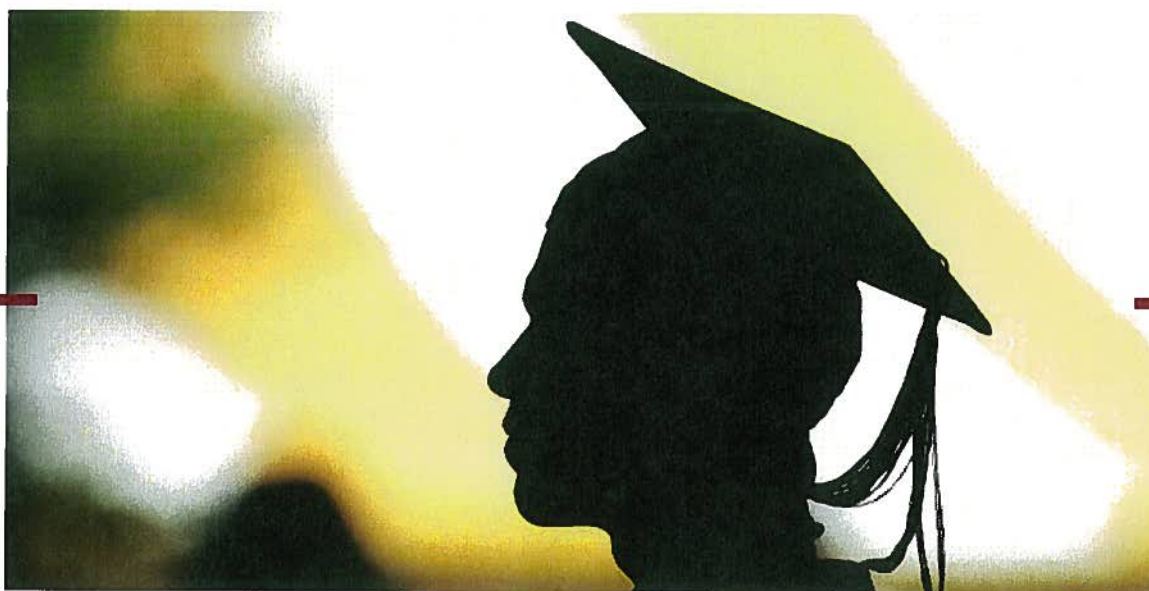
Nevada on a grander scale faces these same challenges. Nevada’s public colleges and universities have historically been successful in serving large numbers of Nevadans, but many students fail to graduate and those who do often take too long to do so. As a result, degree productivity across NSHE institutions is extremely low. In a state that needs more educated workers in the future, the NSHE faces the daunting challenge of producing more degrees in a shorter period of time using fewer resources and ensuring quality.

In response to these pressures, the Nevada Board of Regents initiated a strategic planning process to sharpen the focus of its current master plan, *Building Nevada’s Future: A Master Plan for Higher Education in Nevada*. The Board set student success as its primary goal, that is graduating more students with meaningful degrees and certificates, thus positioning the graduates for fulfilling and productive careers and positioning the State with an educated citizenry required for supporting and maintaining economic development and diversification. The following initiatives are designed to support that goal and provide a reasonable plan for achievable implementation.



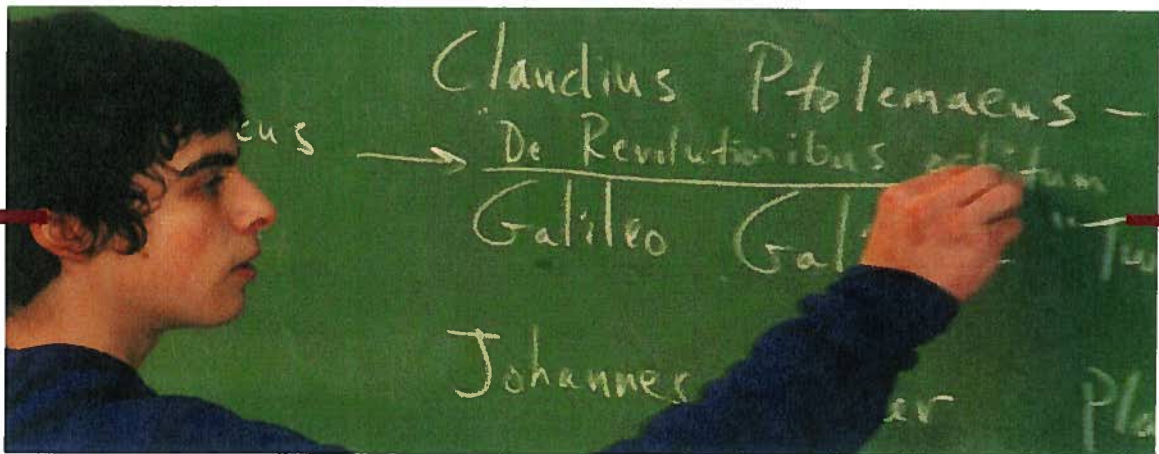
Increase Student Achievement, Retention, & Success

- Improve remediation efforts and develop new instructional strategies and strengthen K-12 partnerships to ensure students are adequately prepared for the rigors of college level coursework.
- Focus research activities in areas with high probability of success and recognition; review and streamline research activities in areas of lower demand or success.
- Increase student mentoring and advising efforts to ensure that students are aware of and understand the steps necessary for success.
- Remain responsive to faculty concerns in order to attract and retain qualified faculty to carry out strategic direction and achieve institutional goals.
- Re-examine all courses in order to utilize transformative teaching methods that benefit students.
- Require institutions to examine and establish procedures and goals to ensure that all students admitted receive the essential access to classes and support services that will allow them timely progress to degree.
- Require the development of academic degree plans for all degree-seeking students through mandatory advising.



Increase Transparency, Accountability and Performance

- Adopt the Complete College America (CCA) goals, including goals for enrolling and graduating students from diverse backgrounds.
- Reward institutions for progress in achieving adopted performance standards, including goals agreed upon through the National Governor's Association Policy Academy and the CCA completion metrics.
- Establish institutional protocols for reviewing student performance and determining the extent to which they are pursuing and completing educational programs and acquiring the skills demanded of Nevada employers.
- Develop and implement institutional assessment plans and effective measures of student learning outcomes for all academic programs—these plans should define student learning outcomes, assess student performance and be used to improve teaching and learning.
- Utilize data to identify obstacles to student success and take appropriate steps to correct those obstacles.
- Develop incentives for recruiting and retaining high performing and innovative faculty.
- Establish performance metrics to set budget parameters, determine system priorities and allocate performance funding dollars.
- Establish institutional incentives that reinforce behaviors that lead to student success.



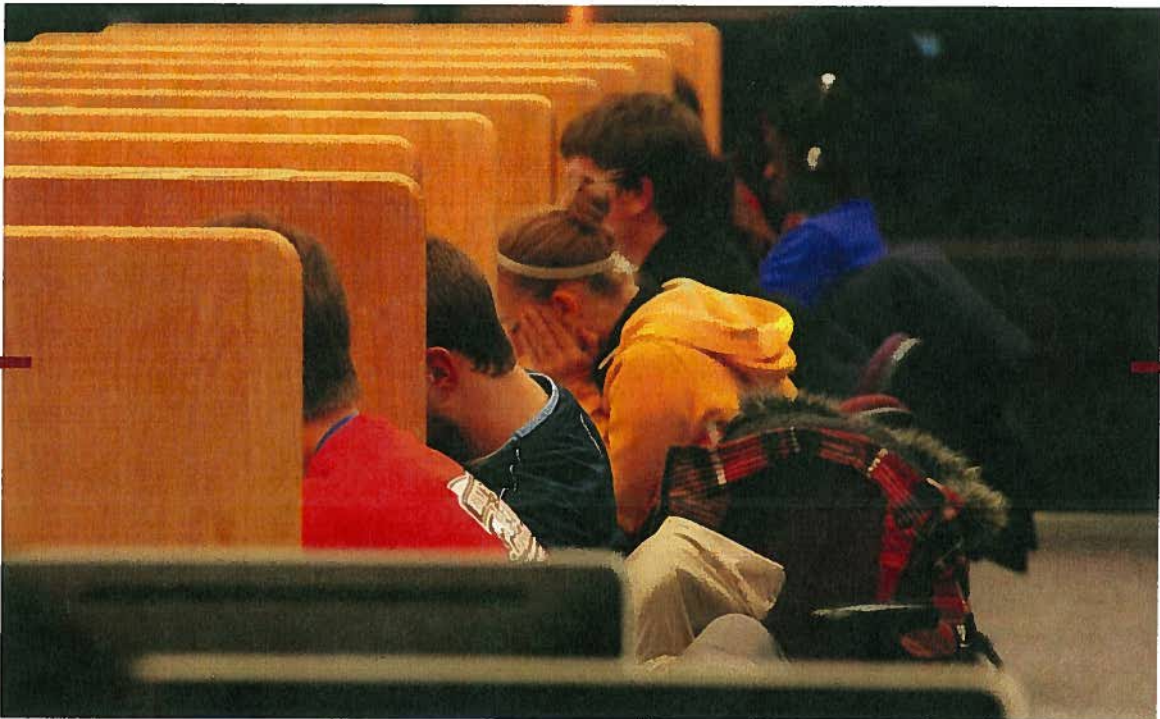
Continuous Review and Revision of Programs to Support Innovation and Responsiveness

- Develop new degree and certificate programs to provide students with career and technical options consistent with current and forecasted economic development and workforce goals of the state.
- Examine whether, for students who do not meet university admission requirements, to require a transferable associate's degree (AA, AS or AB) to transfer to a university.
- Develop appropriate public/private partnerships with community, businesses, and K-12 to support innovation connectivity, including enhanced collaborative R&D efforts between industry and higher education research institutions.
- Establish goals for increasing the number of and revenue from grants for research and workforce development in areas of high demand/success, including R&D that will support intellectual property and commercialization.
- Seek funding for innovative and cutting-edge research, including funds to support the Nevada Knowledge Fund and that leads to invention disclosure, licenses and related income, including spin-off companies.
- Align overarching research and workforce development priorities with the state plan for economic development.
- Strengthen degrees and certificates that link to identified future jobs sought by Nevada in its economic development plan.
- Participate on the State Board of Economic Development.



IV. Ensure that Higher Education is Accessible and Affordable for All Nevadans

- Increase the college participation rate for students from low income and first generation families through transparent and predictable financial aid programs.
- Focus financial aid programs on students seeking degrees who engage in patterns of success, including full-time enrollment.
- Establish financial aid programs that address the unique challenges faced by underrepresented students.



Plan for Implementation

- **I. Increase Student Achievement, Retention and Success**
 - National Governors Association Policy Academy - Metrics Project
 - Complete College America
 - Efficiency & Effectiveness Committee
 - Remedial Education Project
 - PEBP Task Force
 - Salary and Benefits Schedule Review
 - P-20 Initiatives \ Alignment
 - Diversity/EDIC Council Recommendations adopted September 2011
- **II. Increase Transparency, Accountability and Performance**
 - National Governors Association Policy Academy - Metrics Project
 - Complete College America
 - Formula Funding Study
 - iNtegrate – Wrap SIS and Launch iNtegrate2
 - NSHE data warehouse
 - Code Review Task Force
 - Statewide Longitudinal Data System
 - Government Relations/Communications Plan
- **III. Continuous Review and Revision of Programs to Support Innovation and Responsiveness**
 - Nevada Health Care Sector Council
 - Community College Task Force Implementation
 - Health Sciences Council
 - Low Yield Policy Proposal
 - Academic Health Center – partnership with University Medical Center
 - Efficiency & Effectiveness Committee – savings reinvestment
- **IV. Ensure that Higher Education is Accessible and Affordable for All Nevadans**
 - Access & Affordability Committee