

# Nevada Juvenile Justice

Ross Armstrong, Juvenile Services Deputy Administrator

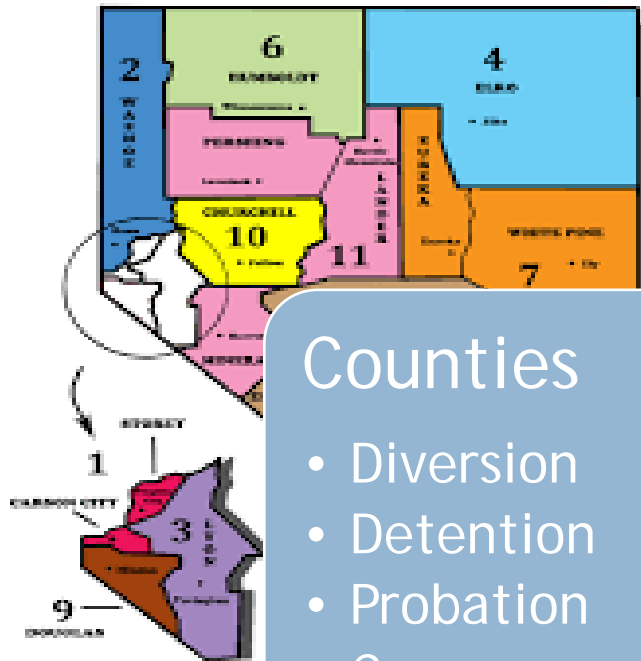
Division of Child and Family Services

[rarmstrong@dcfs.nv.gov](mailto:rarmstrong@dcfs.nv.gov)

775-688-1421

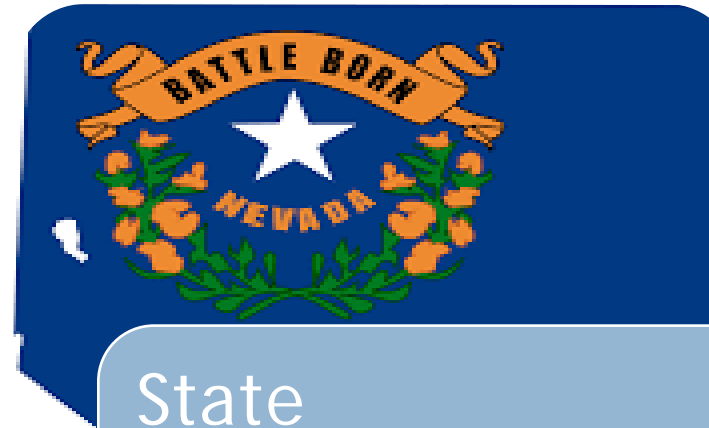


# System Overview



## Counties

- Diversion
- Detention
- Probation
- Camps
- Alternative Placements

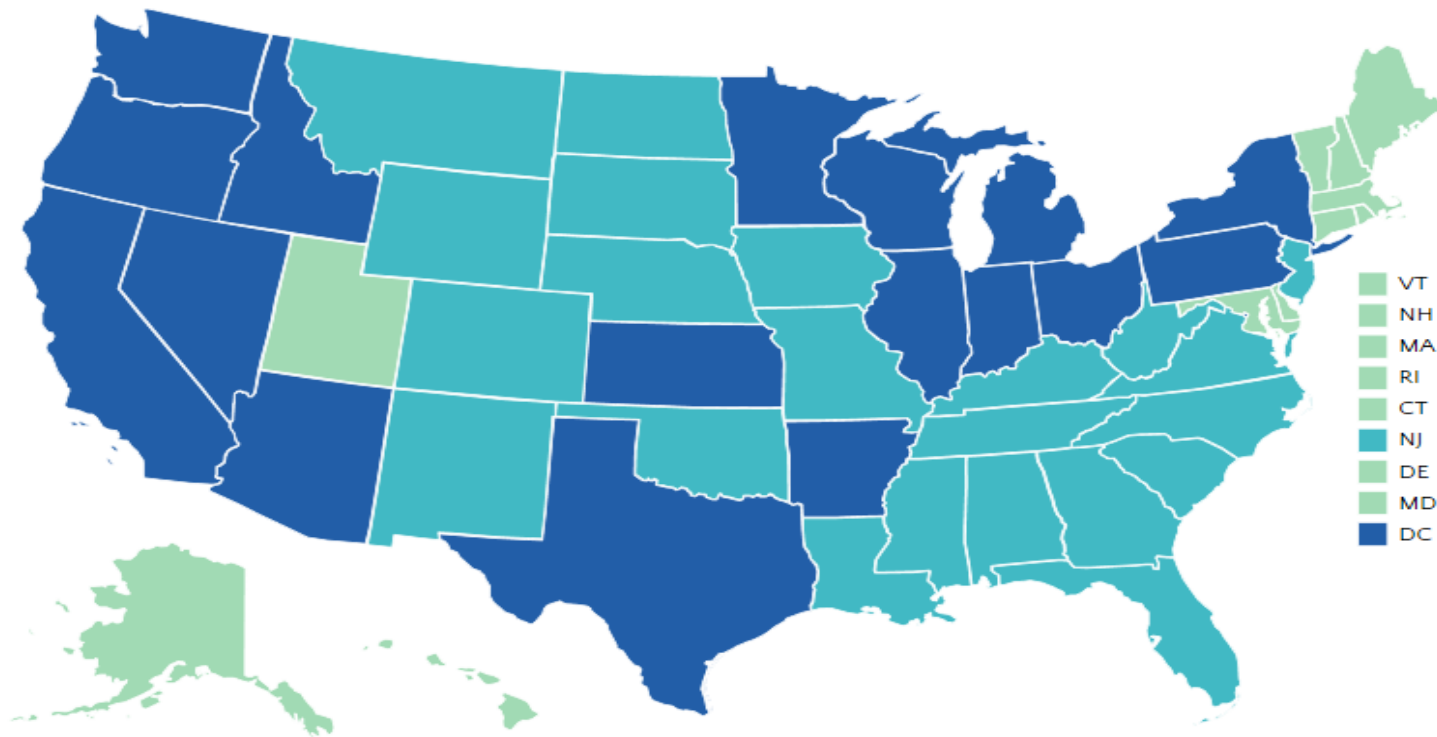


## State

- Youth Centers
- Parole
- Alternative Placements



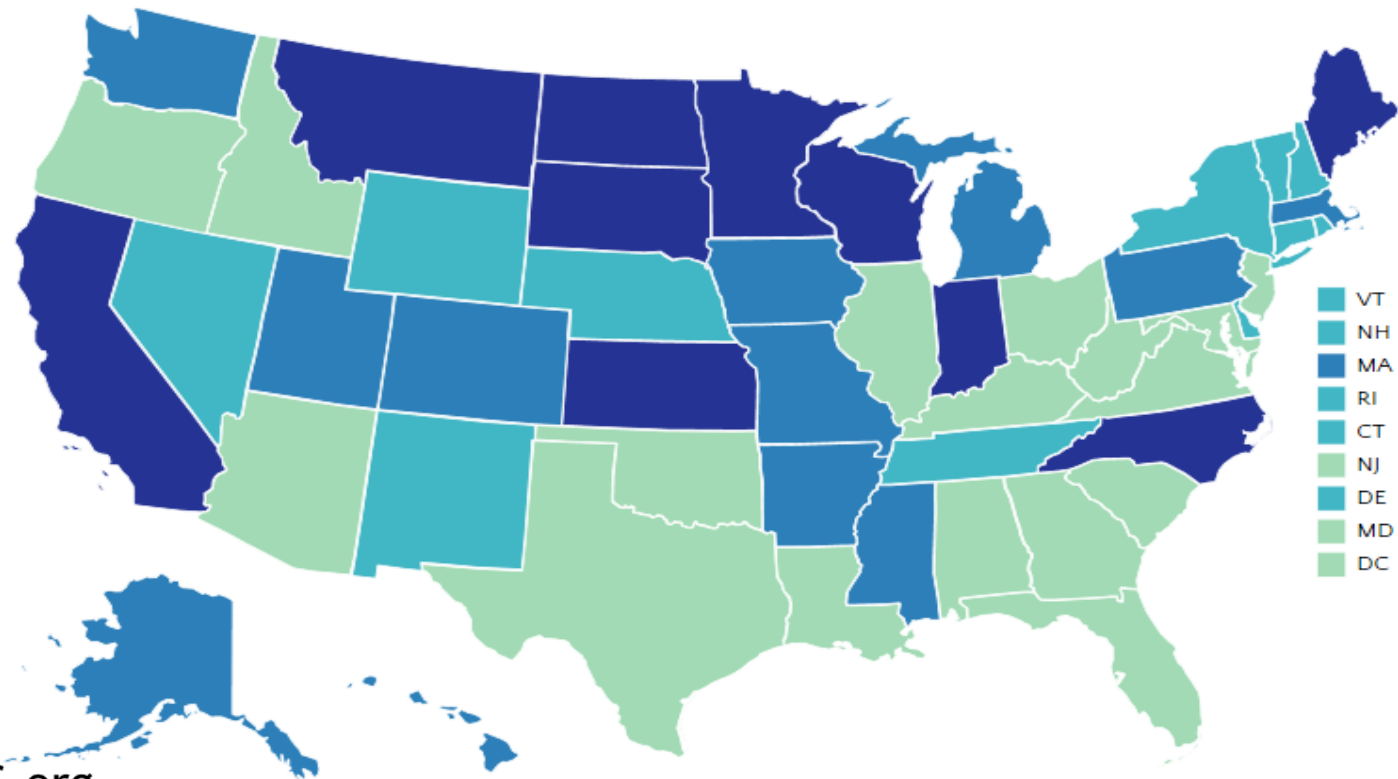
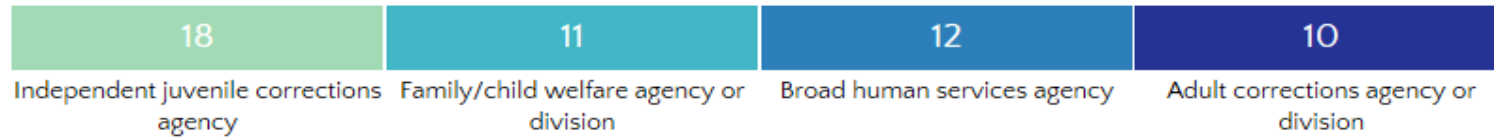
# Nevada Compared to USA



Source: JJGPS.org



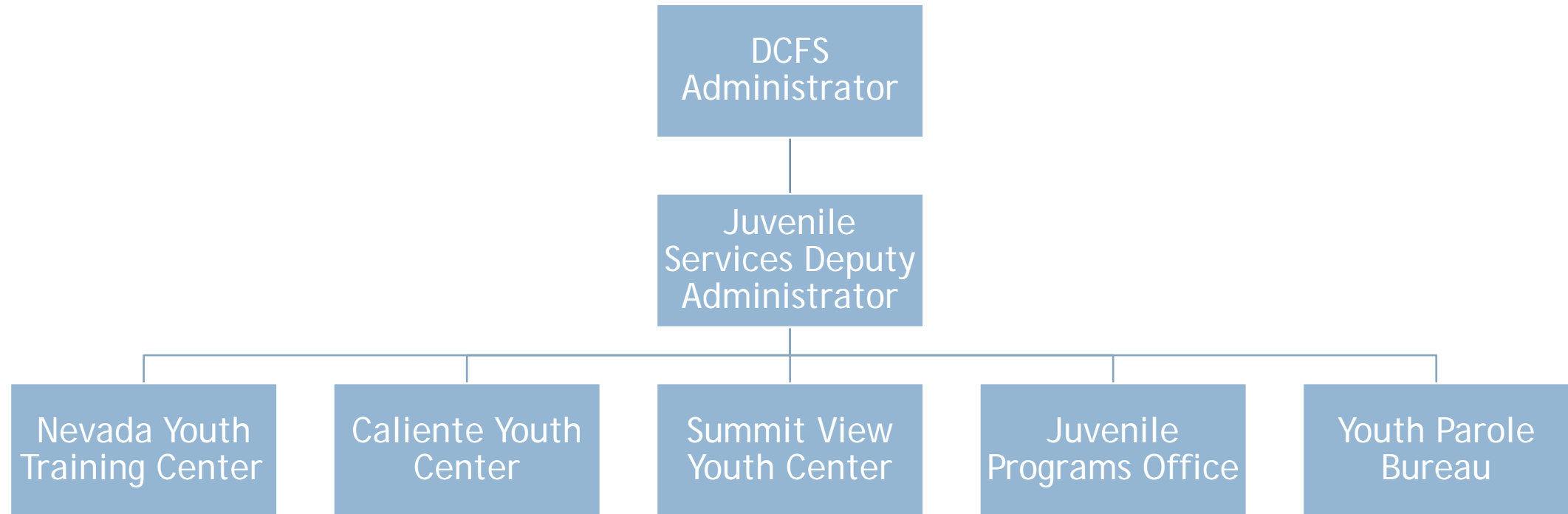
# Nevada Compared to USA



Source: JJGPS.org



# State Organization





# Statewide Juvenile Justice Groups

- Governor's Juvenile Justice Commission
- Supreme Court Commission on Juvenile Justice Reform
- Nevada Association of Juvenile Justice Administrators
- Legislative Committee on Child Welfare and Juvenile Justice
- Advisory Commission on the Administration of Justice



# Juvenile Process Key Differences From Adult System

- No bail
- Only bench trials – really “contested hearings”
- No public proceedings
- Sentencing for a juvenile = disposition
- No specific sentencing length – decision regarding placement
- A finding of guilt regarding charges for a juvenile = adjudication
- Youth are referred to as subject minors not defendants
- In the juvenile system a youth makes an admission; for adults, a guilty or not guilty plea





# Funding Relationship With Counties (FY15)

State General Fund Funding of Front End Services	
Community Partnership Block Grant	\$2.35 Million
County Youth Camps (Spring Mountain, China Spring, Aurora Pines)	\$2.18 Million
Total	\$4.53 Million

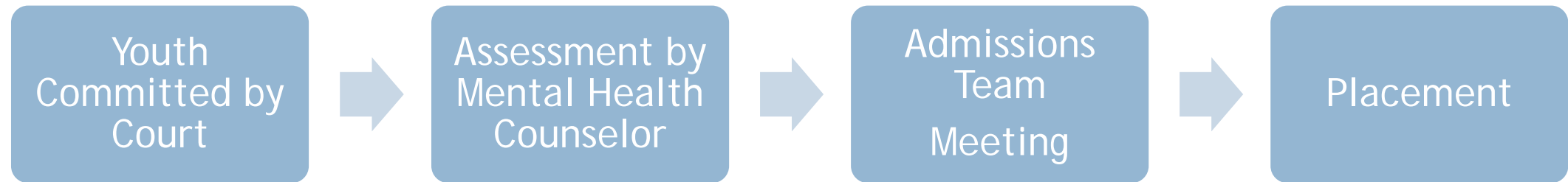
County Funding of Deep End Services	
Youth Parole Assessments	\$2.42 Million



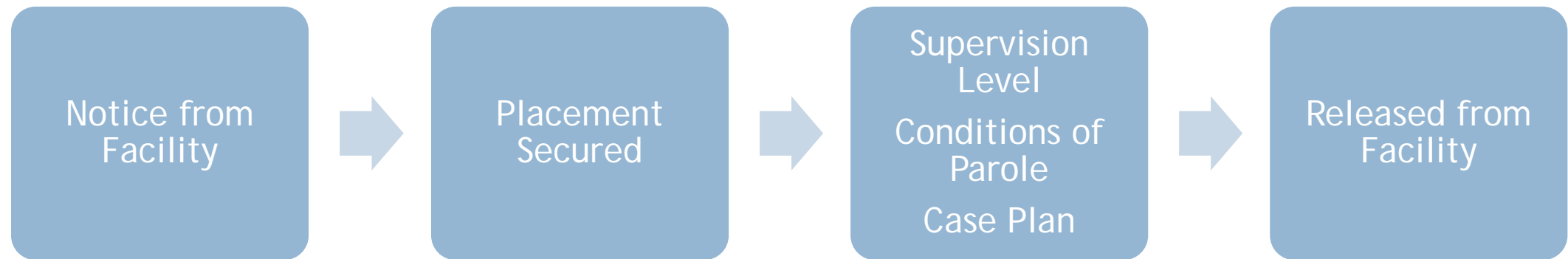




# Admissions



# Parole





# Facilities

	Nevada Youth Training Center	Caliente Youth Center	Summit View Youth Center
Location	Elko	Caliente	North Las Vegas
Beds	60 Male	100 Male / 40 Female	48 Male
Budgeted Staff	86	100	68
Security Type	Staff Secure	Staff Secure	Physically Secure
Education	Independence HS	Lincoln County SD	Clark County SD
Average Length of Stay	7 months	8 months	7 months*



# Summit View Youth Center





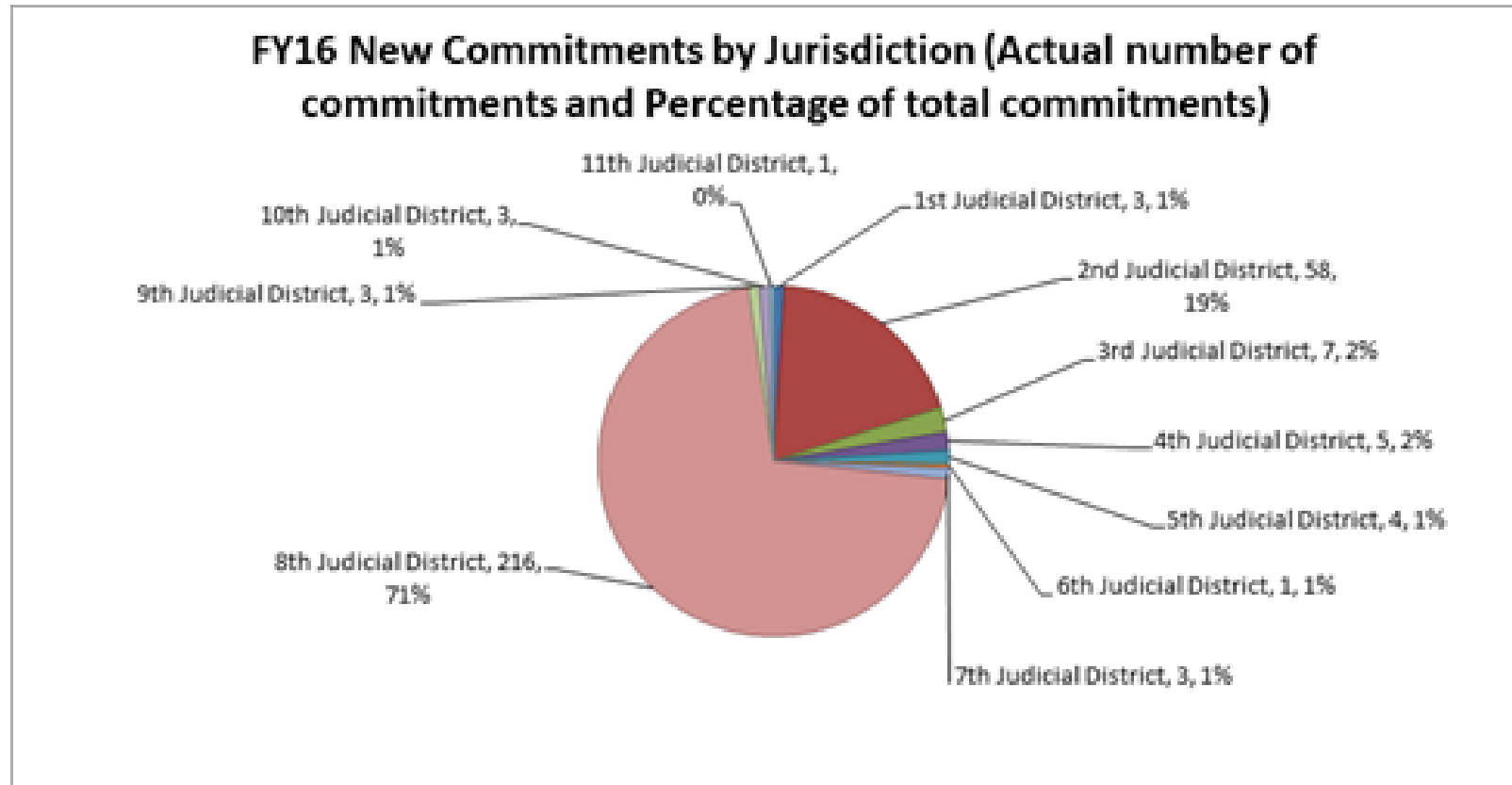
# Summit View Youth Center

## Highlights

- Opening date: February 23, 2016
- Use of Correctional Staff
- Positive Behavior Interventions and Supports
- DCFS Children's Mental Health Services
- Clark County School District



# Commitments



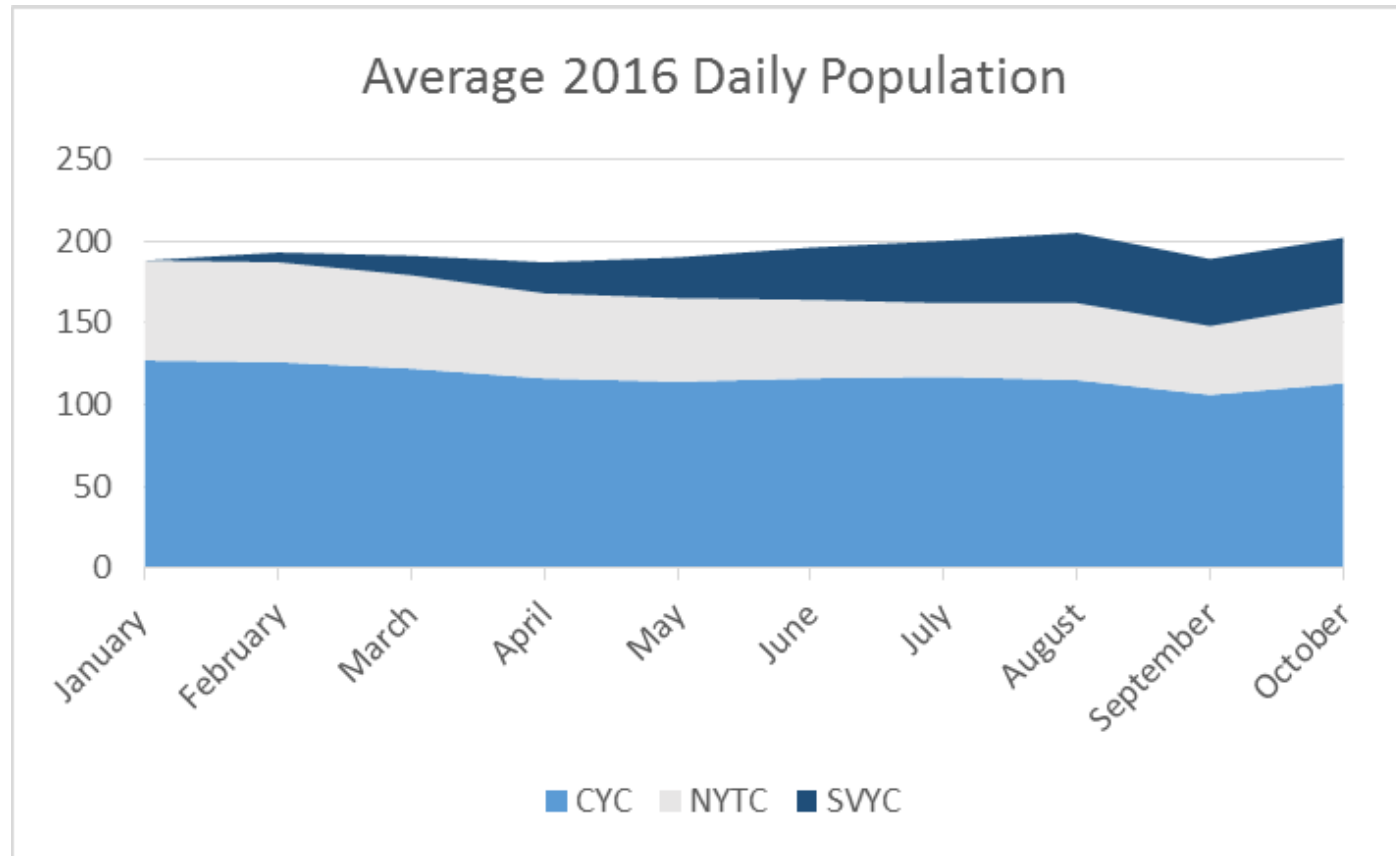


# Commitment Statistics

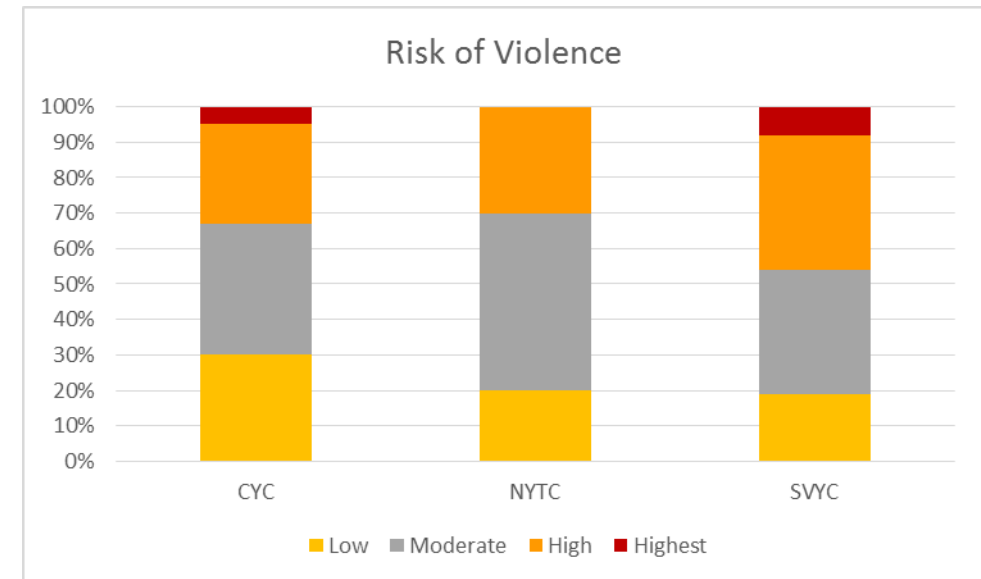
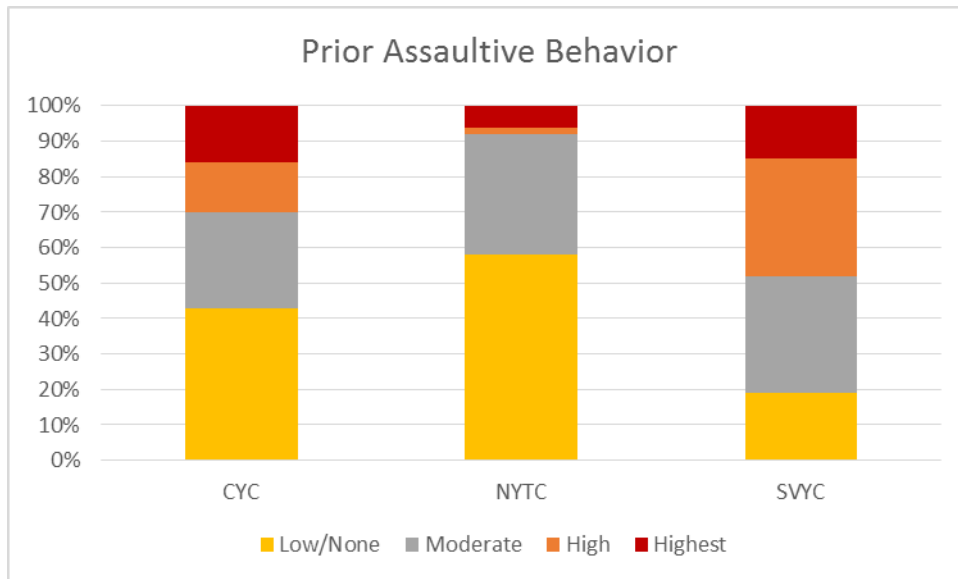
Fiscal Year 2016 Statistics				
Total Commitments	304		Average Number of Youth Out of State	17
Average Age at Time of Commitment	16.8 years		Average Length of Stay on Parole	13.6 months
Top 3 Offenses	Probation Violation (28.9%)  Robbery (14.47%)  Non-Sales Drug Offense (14.47%)		Lowest 3 Offenses	Arson (0.33%)  Sales Drug Offense (0.33%)  Sexual Offense (1.32%)



# Facility Population

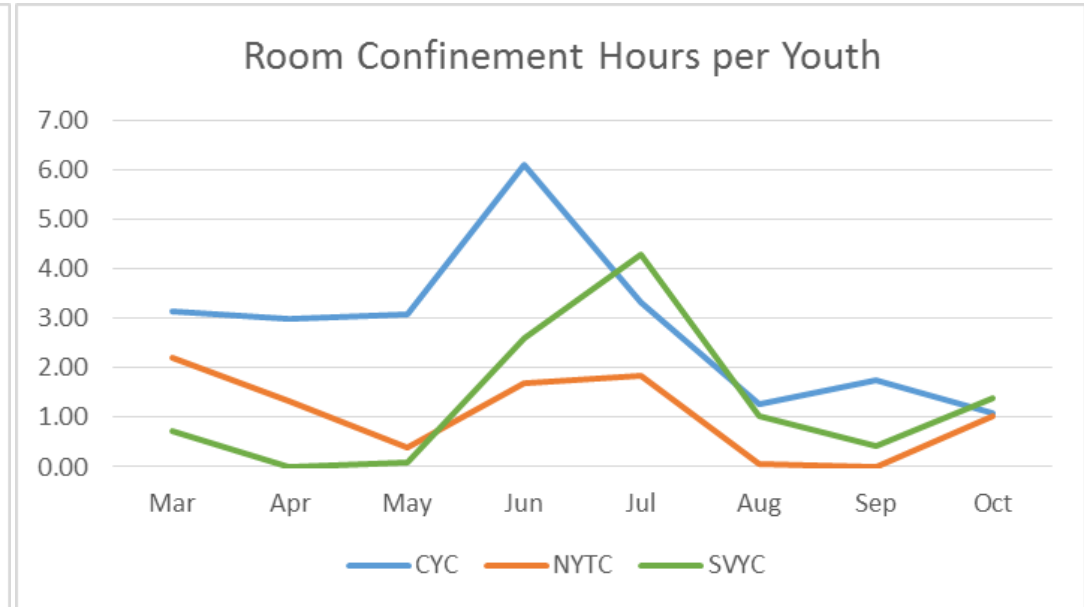
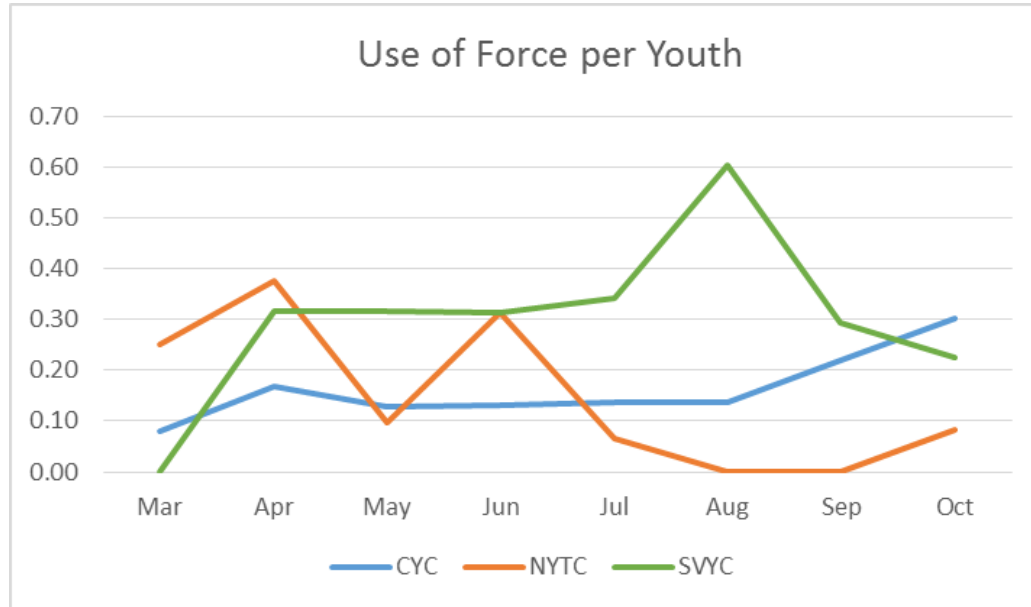


# Risk Profiles





# Performance Indicators





# Parole Initiatives

- Clinical Program Manager
  - Enhancing mental health service delivery for DCFS Juvenile Justice Youth
  - Coordination of Agencies and Providers
  - Statewide supervision of Youth Parole Mental Health Counselors
- Parental Engagement
  - Family Travel Program
  - Parent Orientation class
- Transition from Facility to Community
  - Parole visits to facilities
- New Parole Supervision Policy Adopted 2016
  - Objective criteria for supervision level, enhanced case planning





# Juvenile Justice Programs Office

- Formula Grant
  - Subgrants (\$190,762.00)
  - State Advisory Group
    - Governor's Juvenile Justice Commission
  - Compliance Monitoring
    - Jail Removal, Deinstitutionalization of Status Offenders, Sight and Sound Separation, Disproportionate Minority Contact
- Data Collection
- Positions
  - Chief
  - Program Officer
  - PREA Coordinator
  - Clinical Program Planner (QA & Policy Development)





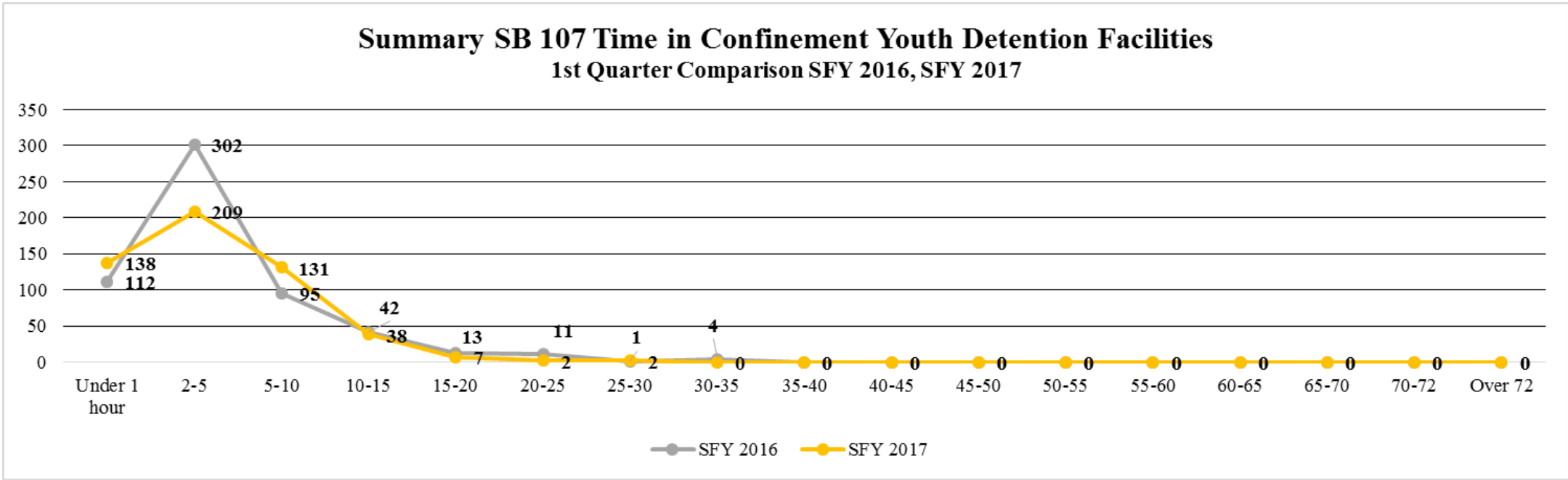
# Recent Legislative Reforms

- Prison Rape Elimination Act – Federally Mandated
  - Statewide PREA Coordinator
  - Managers in Each Facility
  - 42 Separate Standards for Juvenile Facilities
    - Screening for youth risk
    - Education of rights and responsibilities
    - Reporting and investigation
    - Staffing ratios and supervision augmented by video surveillance
- Restrictions on Corrective Room Restriction (SB107, 2013 Session)
  - Monthly reporting to the state
  - 72 hour maximum
  - Limits on reasons for Corrective Room Restriction

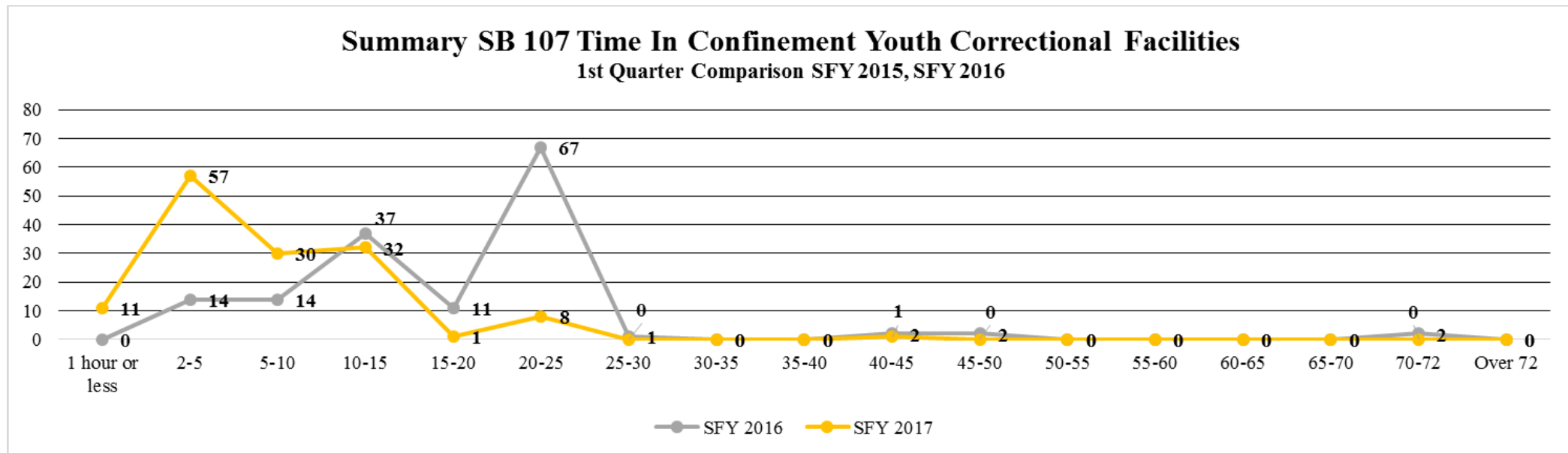




# Corrective Room Restriction



# Corrective Room Restriction



# Current Juvenile Justice Hot Topics

- Data Collection, Analysis and Use
  - Recidivism
  - Racial/ethnic fairness
  - Competency
  - Length of Stay
- Online Resource: [www.jjgps.org](http://www.jjgps.org)

