

* Satellite Tracking of People LLC

THE ONLY COMPANY
PROVIDING ACTIVE,
HYBRID AND PASSIVE
GPS MONITORING TO
GOVERNMENT
AGENCIES WITH A
ONE-PIECE DEVICE

TRACK THE BODY, NOT THE BOX.

BLUTAG®

One-piece GPS monitoring device

Technology can not replace in-person interaction and unannounced visits between supervising officers and offenders. However, reliable technologically-advanced Global Positioning System (GPS)-based monitoring offers an effective tool that enhances the ability of supervising officers to better manage their offender caseload and available resources. BluTag®, developed by Satellite Tracking of People LLC (STOP), is the *one-piece GPS device* that equips supervising officers with the most effective, proven and reliable monitoring system.

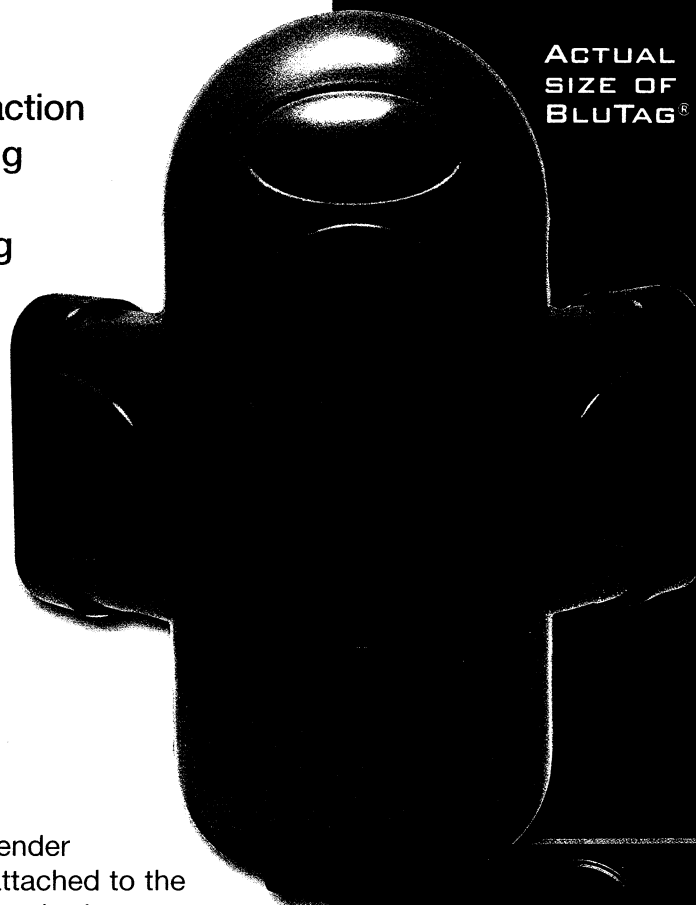
NEVER-REMOVED GPS DEVICE EQUATES TO HIGHER LEVEL OF OFFENDER ACCOUNTABILITY

We developed BluTag® on the premise that the best offender monitoring requires the equipment to remain securely attached to the body at all times — not dependent on the offender remembering to carry at least one component. The receiver and transmitter in multi-piece GPS monitoring devices are housed in separate units, and the receiver is removed to recharge the battery and/or transmit monitoring data. When this unit is removed, an offender's movements are not tracked or recorded.

CONVENIENT AND MOBILE BATTERY RECHARGING

Offenders must complete one task every day: recharge the battery. With the shortest recharge period in the industry, BluTag's® battery is fully charged in 30 minutes or less, once every 12-14 hours. Multi-piece devices can restrict activities for up to eight hours a day, which inconveniences the offender as he or she works toward successfully re-integrating into the community. BluTag's® charging coupler plugs into any standard AC electrical outlet allowing offenders to recharge the battery in locations other than their home.

ACTUAL
SIZE OF
BLUTAG®



BluTag®, the first and most advanced one-piece monitoring device using Global Positioning System (GPS) technology

Advisory Commission on Admin. of Justice

Exhibit 4 pg 1 of 33 Date: 3-17-08
1 of 33

FEWER DAMAGED OR LOST DEVICES

Unlike multi-piece devices, BluTag® is not prone to damage by dropping because it remains securely attached to an offender's ankle at all times.

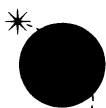
EASILY MANAGED INVENTORY

A supervising agency's on-site inventory is streamlined with BluTag® and a few consumable items and optional accessories.

BLUTAG® FEATURES AND SPECIFICATIONS

- Receives and records GPS latitude and longitude coordinates once a minute.
- Every GPS coordinate set contains the following data: date and time stamp, the speed at which the offender traveled and the nearest street address as determined by the U.S. Postal Service.
- Receiver and transmitter are housed in a rugged, weatherproof, factory-sealed, plastic case. It is shock resistant, water and moisture proof and functions reliably under normal atmospheric and environmental conditions.
- The small size makes the device inconspicuous and easily covered with a pants leg.
- Remote programming of multiple inclusion and exclusion zones.
- Attaches to an offender's ankle with a hypoallergenic fiber-optic strap that detects tampering.
- Stores up to four days of monitoring data.
- FCC certified for use in any monitoring mode.
- VeriTracks®, our patented Internet-based tracking application, receives, disseminates and stores monitoring data from any BluTag® device. Supervising officers log into VeriTracks® to review the movements of any offender(s) in their caseload, regardless of which BluTag® device is used for monitoring.





TRACK THE BODY, NOT THE BOX.

BLUTAG® ACTIVE

One-piece GPS monitoring device

BluTag® Active monitors offenders using Global Positioning System (GPS) technology by providing supervising officers with immediate notifications containing near real-time data. This allows supervising officers to quickly take appropriate action related to the notification.

BluTag® Active is similar in size to a computer mouse and weighs only six ounces. An offender can easily cover the device with a pants leg making it inconspicuous, which reduces vandalism of the equipment and allows for easier re-integration within the community.

BluTag® Active is an effective monitoring device for adult offenders and juveniles who require more intensive supervision because supervising officers receive notifications containing near real-time data. Some legal classifications of offenders monitored by BluTag® Active include gang member, habitual offender, parolee, pre-trial defendant, probationer and sex offender.

BENEFITS AND FEATURES

When offenders are monitored with BluTag® Active, supervising officers have access to near real-time data 24/7. Benefits and features include:

- In the absence of GPS program violations monitoring data transmits once every 10 minutes.
- Supervising officers receive notification on tamper and zone violations with near real-time data via fax, email, page or text message, whichever is their preference.
- Supervising officers can "ping" the BluTag® Active device assigned to a specific offender to determine his or her current location.
- A secondary motion detection system allows offender location verification in the absence of GPS signals.
- Data transmits from BluTag® Active to VeriTracks®, our Internet-based tracking application, using Global System for Mobile (GSM) communications and General Packet Radio Service (GPRS) technology.



(CONTINUED)

BLUTAG® ACTIVE (CONTINUED)

VERITRACKS®: OFFENDER TRACKING APPLICATION

VeriTracks® is our patented, 100 percent Internet-based tracking application that receives, stores and distributes monitoring data transmitted by BluTag® Active. Supervising officers access VeriTracks® 24/7 using any computer with a high-speed Internet connection.

An issue of active GPS monitoring is the amount of data a supervising officer receives. While logged into VeriTracks®, supervising officers select what notifications they want to receive and how they will receive them. They can change these preferences at any time to help them better manage their caseload and resources.



Satellite Tracking of People LLC

1212 North Post Oak Road, Suite 100 • Houston, Texas 77055
Toll-free 866-5-BluTag • Fax 832-553-9530
info@stopllc.com • www.stopllc.com



TRACK THE BODY, NOT THE BOX.

BLUTAG® HYBRID

One-piece GPS monitoring device

BluTag® Hybrid and the other BluTag® devices have the same physical attributes and share many features regardless of the monitoring mode. This Global Positioning System (GPS) device is different from the other BluTag® devices because of its internal programming and communication. BluTag® Hybrid communicates device tampering and inclusion zone violations with near real-time data like BluTag® Active. The device also allows supervising officers to “ping” it, which immediately transmits an offender’s current location, regardless of when the last GPS coordinates were received.

Offenders monitored with BluTag® Hybrid may require a higher level of supervision than what is offered with passive GPS monitoring, but not as intensive as active GPS monitoring. Supervising officers can better manage their caseload and resources by receiving notice of tampering and inclusion zone violations that contain near real-time data.

A distinct advantage of BluTag® Hybrid is its ability to easily and quickly convert to active GPS monitoring without changing equipment. Supervising officers need only call, email or fax our dual purpose monitoring and technical support center any time of the day or night to switch the device to active GPS monitoring.

DATA TRANSMISSIONS

BluTag® Hybrid can transmit monitoring data using a cellular network or through BluHome®, a GPS landline communication accessory. The device transmits monitoring data approximately twice a day when using a cellular network. Those transmissions occur when the offender attaches the battery charging coupler to the BluTag® Hybrid device.



(CONTINUED)

BLUTAG® HYBRID (CONTINUED)

When BluTag® Hybrid is used in conjunction with BluHome®, the radio frequency tether linking the two units engages when the offender enters its monitoring range. BluHome® installs in the offender's home and transmits monitoring data to VeriTracks®, our Internet-based tracking application, using a standard landline telephone connection.

VERITRACKS®: OFFENDER TRACKING APPLICATION

VeriTracks® is our patented, 100 percent Internet-based tracking application that receives, stores and distributes monitoring data transmitted by BluTag® Hybrid. Supervising officers access VeriTracks® 24/7 using any computer with a high-speed Internet connection.



TRACK THE BODY, NOT THE BOX.

BLUTAG® PASSIVE

One-piece GPS monitoring device

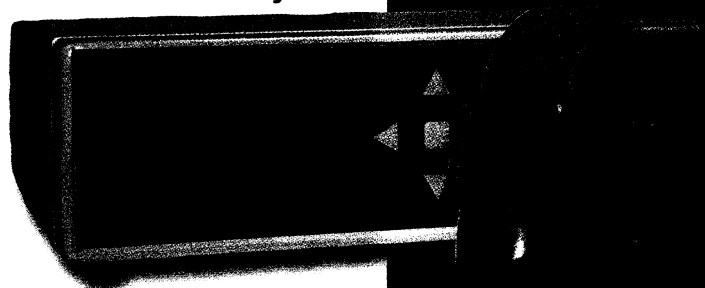
BluTag® Passive monitors offenders with Global Positioning System (GPS) technology and transmits monitoring data over a standard landline telephone connection. *This device is the only commercially proven one-piece passive GPS monitoring equipment on the market today.* The receiver and transmitter are housed in a single unit that remains securely fastened around the offender's ankle. An offender need not carry or plug into any other equipment.

BluTag® Passive transmits data using a radio frequency (RF) tether to BluHome®, a GPS accessory, while still attached to an offender's ankle. Multi-piece passive GPS devices require an offender to remove the GPS receiver (the component that actually tracks an offender's movements) daily for up to eight hours to recharge the battery and/or transmit monitoring data.

BluTag® Passive is used to monitor offenders considered a lower risk of engaging in unlawful actions or committing technical violations against their terms of community supervision. Its small size makes it more supportive of rehabilitation than traditional multi-piece devices. BluTag® Passive is the same size as a computer mouse, weighs only six ounces and never removed from an offender's ankle. Because a pants leg completely covers the device an offender easily re-integrates into the community.

DATA TRANSMISSIONS

BluTag® Passive receives and stores all monitoring data onboard until the offender enters the RF tether range of BluHome®, a GPS accessory that transmits data to VeriTracks® through a standard landline telephone connection. BluHome® installs into an offender's residence and is powered by plugging it into a standard AC electrical outlet.



BluTag® Passive, the world's first one-piece passive GPS monitoring device

(CONTINUED)

BLUTAG® PASSIVE (CONTINUED)

BluHome® allows the customization of cut-off points for the RF tether regardless of the layout or construction of the home. This significantly enhances curfews because the tether can be programmed to cut off at a specified location in or out of the offender's home. Traditional electronic tethers remain effective only within a default range and when the layout and/or construction of the home provides few, if any, obstacles through which the signal must penetrate.

BluTag® Passive immediately begins receiving GPS coordinates when the RF tether between itself and BluHome® is broken. Because BluTag® Passive remains securely attached to an offender's ankle at all times, public safety is enhanced because the movements of an offender are tracked 24/7, even when an unscheduled exit from the home occurs. BluHome® sends a violation alert when such an event happens.

VERITRACKS®: OFFENDER TRACKING APPLICATION

VeriTracks® is our patented, 100 percent Internet-based tracking application that receives, stores and distributes monitoring data transmitted by BluTag® Passive to BluHome®. Supervising officers access VeriTracks® 24/7 using any computer with a high-speed Internet connection.



THE ONLY COMPANY
PROVIDING ACTIVE,
HYBRID AND PASSIVE
GPS MONITORING TO
GOVERNMENT
AGENCIES WITH A
ONE-PIECE DEVICE

TRACK THE BODY, NOT THE BOX.™

VERITRACKS®: INTERNET-BASED TRACKING APPLICATION

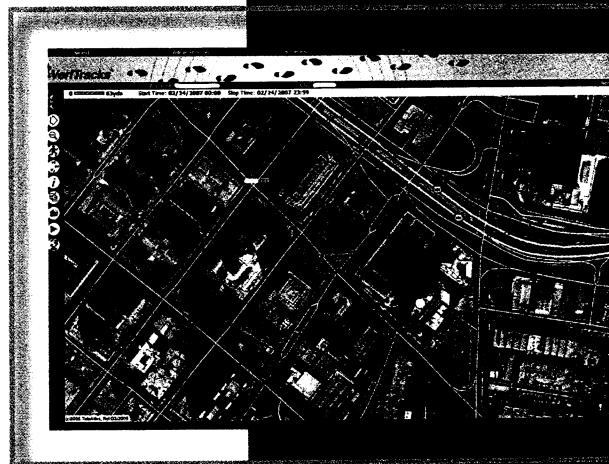
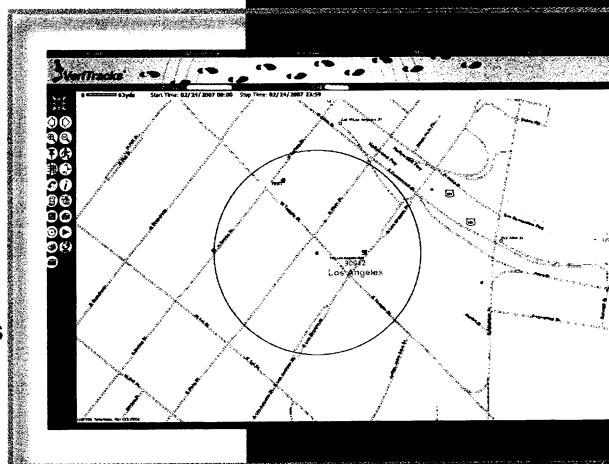
Satellite Tracking of People LLC (STOP) owns and maintains VeriTracks®, our patented, 100 percent Internet-based tracking application. VeriTracks® receives, stores and distributes monitoring data transmitted by our one-piece GPS monitoring devices, BluTag® Active, BluTag® Hybrid and BluTag® Passive. It simplifies the offender monitoring process by interfacing with the BluTag® device in the same manner regardless of the device's monitoring mode.

Supervising officers access VeriTracks® 24/7 using any computer with a high speed Internet connection. The computer needs to have a standard Internet browser, such as Microsoft Internet Explorer 5.5 or higher and operate on Windows 98 or later. VeriTracks® provides numerous advantages over other tracking applications.

- No security compromises of the supervising officer's desktop or the agency's information system.
- No risk of installing infected files over the Internet.
- No additional ports or services opened on the agency's firewall in order to support non-industry standard or non-COTS communications.

FUNCTIONALITY

- Enrolling an offender into VeriTracks® and assigning a BluTag® device is a simple three-step process that is completed in a matter of minutes.
- Supervising officers can create, assign and edit an unlimited number of date and time sensitive exclusion and inclusion zones for any offender. Zones help control an offender's movements. Exclusion zones are geographic areas an offender is prohibited from entering for certain periods of time. Inclusion zones



(CONTINUED)

are geographic areas an offender is required to enter and remain for specified periods of time.

- VeriTracks® offers robust mapping that includes aerial photography. VeriTracks® displays and animates the current or historical tracks of one or more offenders at the same time. Supervising officers can analyze historical tracks for patterns and trends in the movements of one or more offenders, zoom down to closely examine a city block or zoom out to view an entire state and use reverse geocoding to determine the nearest U.S. Postal Service address of any location on a map. STOP can also add custom overlays indicating the location of liquor stores, parks, schools and other public areas.
- VeriTracks® allows supervising officers to create a customized schedule for every offender in his or her caseload. Creating a schedule is easily accomplished by setting the time and date parameters for the location(s) of an offender. One-time exceptions to an offender's standard schedule are easily inserted without re-creating the entire schedule. When the exception has passed, VeriTracks® automatically reverts back to the offender's standard schedule.
- Supervising officers can assign a back-up or duty officer to receive certain violation notifications while he or she is off-duty or on vacation. During the officer's off-duty hours or vacation, he or she can still elect to receive event notifications but will not respond to them.
- Supervising officers and program managers query VeriTracks® to develop reports on various topics, including equipment and offenders. If a supervising agency requires customized data reports, STOP's dedicated report writer can create it. The reports are available online and downloadable into numerous formats. All reports reflect near real-time data when generated.

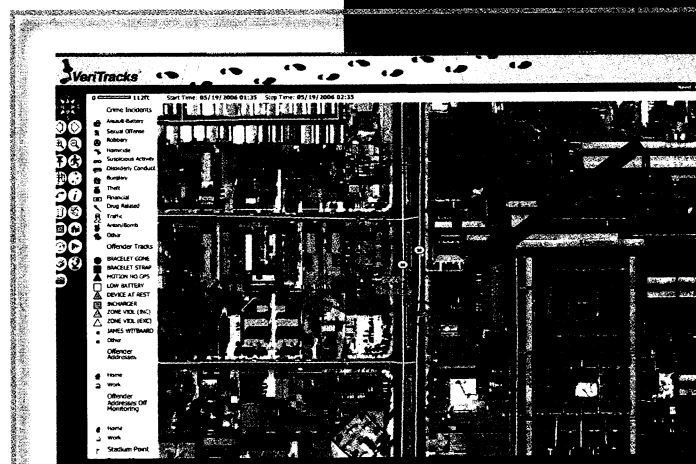
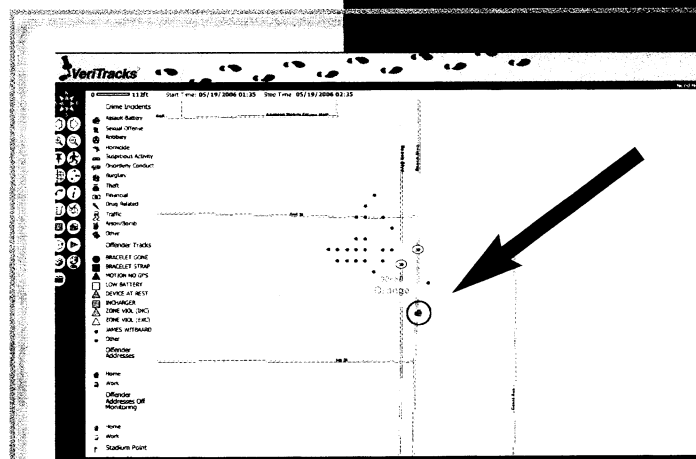
TRACK THE BODY, NOT THE BOX.

AUTOMATED CRIME SCENE CORRELATION

Satellite Tracking of People LLC (STOP) offers a value-added service that can help a supervising agency partner with local law enforcement officials in order to solve crimes faster. The Automated Crime Scene Correlation (ACSC) tool is part of VeriTracks®, STOP's Internet-based tracking application. This broad-based criminal justice solution integrates both correctional and law enforcement functionality into a single tool.

VeriTracks® is configured to automatically receive crime data from a local law enforcement agency's records management system. ACSC then automatically compares offender tracks with the location and time of reported crimes. When there is an intersection between the two data sources, VeriTracks® automatically generates a report containing information about each "hit," i.e. the intersection of the two data sources. The "crime hit" report is emailed to assigned supervising officer and law enforcement official every morning. This report provides hyperlinks to VeriTracks® and includes a grading scale to assist with determining the quality of the "crime hit."

ACSC saves many investigative hours by using technology to solve crimes faster. Law enforcement officials can develop more viable and accurate suspect lists because offenders who may fit the perpetrator's profile but were not in the vicinity of the crime are immediately eliminated. It also provides evidence of offenders who were in the area of the crime when it happened, so law enforcement officials possess solid information from which to begin their investigative efforts.



(CONTINUED)

AUTOMATED CRIME SCENE CORRELATION (CONTINUED)

Law enforcement officials can also use VeriTracks® to enhance their monitoring of criminal activity hot spots with the creation of zones. A law enforcement official creates a global zone around a specific geographic region, such as a suspected drug trafficking area, to watch for the presence of monitored offenders.

ACSC is part of VeriTracks® and available at no additional cost to supervising and law enforcement agencies. The supervising agency authorizes accessibility into VeriTracks® and ACSC for each law enforcement agency.



Satellite Tracking of People LLC

THE ONLY COMPANY
PROVIDING ACTIVE,
HYBRID AND PASSIVE
GPS MONITORING TO
GOVERNMENT
AGENCIES WITH A
ONE-PIECE DEVICE

TRACK THE BODY, NOT THE BOX.

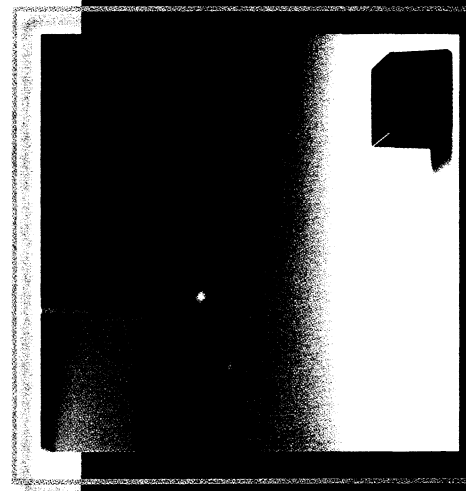
BLUBOX™

Satellite Tracking of People LLC (STOP) offers BluBox™ as an accessory to BluTag® Active and BluTag® Hybrid, our one-piece GPS monitoring devices. BluBox™ confirms the presence of one or more offenders at a specific location through a radio frequency (RF) tether. It installs quickly and easily into an offender's home or a group housing facility where multiple offenders live.

BluBox™ emits a continuous, encrypted RF signal. When an offender enters the signal's range, BluTag® transmits a message to VeriTracks®, our Internet-based tracking application, stating the device detects the presence of BluBox™. As long as BluTag® detects the presence of BluBox™, it curtails the receipt of GPS signals.

BluTag® automatically changes its data transmission schedule to reflect the presence of BluBox™. Because BluBox™ confirms the location of an offender and VeriTracks® receives that message, it is not necessary for BluTag® to follow its usual transmission schedule in the absence of an offender violation. When the RF tether is broken or BluBox™ is moved or disturbed, BluTag® quickly begins receiving GPS signals again and resumes its standard data transmission schedule. BluTag® also transmits a message to VeriTracks® confirming that it no longer detects BluBox™.

BluBox™ is powered through a standard AC electrical outlet. It has a back-up battery that can power the unit up to 24 hours. It is placed in an inconspicuous location that is close to an AC electrical outlet and not exposed to spilled liquids, such as a kitchen or bathroom.





TRACK THE BODY, NOT THE BOX.™

GPS MONITORING: ALL DEVICES ARE NOT THE SAME

ONE-PIECE SUPERIORITY OVER MULTI-PIECE GPS MONITORING DEVICES

Satellite Tracking of People LLC (STOP) was the first company to develop and deploy the one-piece GPS monitoring device. BluTag® houses its receiver and transmitter into a single, permanently sealed unit. BluTag® is also the only one-piece monitoring device in today's market that is commercially-proven through its extensive use throughout the U.S.

BluTag® offers many benefits to supervising agencies.

- 1. Higher level of community safety:** BluTag® is never removed from an offender's ankle to download data or recharge the battery. It is the only equipment needed to monitor offenders. The device tracks their movements 24/7. It eliminates the "bracelet gone" violation, which is one of the most common false alarms for traditional multi-piece devices. The violation is generated by a multi-piece device when the transmitter is out of the receiver's radio frequency monitoring range.

Multi-piece devices force supervising officers to spend their time and effort chasing down far too many "bracelet gone" false alarms, rather than focusing on genuine violations and non-compliant offenders. When the "bracelet gone" violation is real the offender is no longer monitored and his or her movements are unknown, which threatens a community's safety.
- 2. Cost effective:** Multi-piece devices are more susceptible to theft, vandalism and loss, which results in higher costs to the supervising agency. It could also result in further sanctions against an offender. BluTag's® one-piece design eliminates this vulnerability. Supervising agencies also have less need to increase their budget for lost or stolen equipment since BluTag® remains on an offender's ankle at all times. Because BluTag® is a one-piece device with few consumable materials, it requires less staff time to manage the inventory.
- 3. Least offender dependent:** Offenders must complete one task about two times a day: recharge the battery. BluTag® has the shortest battery recharge period in the industry — 30 minutes or less for a complete recharge. Offenders recharge the battery while engaging in sedentary activities, such as watching television or talking on the phone. The charging coupler is similar to a cell phone's, meaning it is portable.

(CONTINUED)

GPS MONITORING (CONTINUED)

BluTag's® battery recharges by plugging into any standard AC electrical outlet. The battery automatically reminds an offender to recharge the device. When the battery's charge begins to run low, it vibrates. Supervising officers receive an alert on the battery's condition if an offender does not recharge the battery in a reasonable amount of time.

4. **No battery replacement:** BluTag's® battery is sealed inside the case and inaccessible to offenders. This eliminates possible false tampering violation alerts or offenders removing the battery and not replacing it before leaving a location.

BluTag's® battery is not replaced by offenders or supervising officers. Should the battery require replacing, STOP's Operations team completes the task. With its battery permanently sealed inside the case, BluTag® greatly reduces the possibility of water leaks, which will damage electronic parts. Devices that require an offender to replace the battery are at greater risk for water leaks because opening and closing the case can weaken the seal. The offender or supervising officer may also inadvertently install the battery incorrectly, which impacts the device's operations. The lifespan of the BluTag® battery is at least 18 months.

5. **Superior tracking:** BluTag® has proven its superior tracking ability in difficult environments, including vehicles and standard residential homes. Drivers of automobiles and long-distance trucks have been effectively tracked with BluTag®.

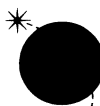
STOP engineers proactively responded to drift, a condition found in all GPS applications involving a lack of precision in location. Our engineers modified BluTag's® algorithms and added additional location data points to address the issue.

6. **Secondary location verification capability:** BluTag® is the only one-piece device equipped to overcome GPS interference. It uses a patented layered location technology. In the absence of a GPS signal, BluTag® monitors its motion through cellular towers. If it changes cellular towers and the device does not receive GPS signals, BluTag® recognizes it is moving and sends an alert to the appropriate supervising officer.

BluTag's® superior one-piece design translates into a more secure monitoring device, fewer false alarms and a reduction in the amount of time supervising officers must devote to investigating them.

When supervising officers use our system, they have the best one available that can help them better manage their caseload, resources and time.





Satellite Tracking of People LLC

THE ONLY COMPANY
PROVIDING ACTIVE,
HYBRID AND PASSIVE
GPS MONITORING TO
GOVERNMENT
AGENCIES WITH A
ONE-PIECE DEVICE

TRACK THE BODY, NOT THE BOX.

SATELLITE TRACKING OF PEOPLE LLC

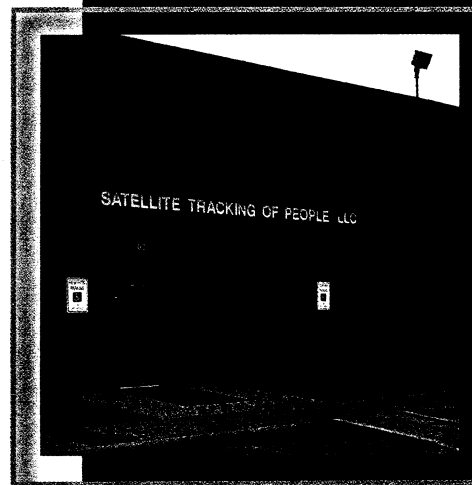
COMPANY BACKGROUND AND HISTORY

Satellite Tracking of People LLC (STOP) is a unique leader in the electronic monitoring industry: corrections professionals created the company for corrections professionals. STOP's executive management team possesses deep understanding and knowledge of the corrections and technology industries. Its collective experience in these industries exceeds 100 years.

Our executive management team offers exceptional insight into a government agency's diverse correctional needs. The team's collective experience encompasses everything from developing and operating state-wide GPS offender monitoring programs to individual county programs. It also includes the development and deployment of offender monitoring hardware and software for community corrections.

Formally established in August 2003, STOP's technology and depth of operations was enhanced as a result of two acquisitions completed in 2004: Verquis LLC, which incorporated in 1997 and was the developer of BluTag®, and the VeriTracks® business line from General Dynamics, which commenced operations in 1999.

Prior to forming STOP, each member of our executive management team worked separately in the field of corrections or the application of technology to corrections. They partnered with government agencies at all levels providing an array of corrections services. They provided incarceration, detention, aftercare and community supervision and electronic monitoring services for juveniles and adult offenders. Today our company helps government agencies start new offender monitoring programs or streamline existing operations with the ultimate goal of preserving the safety and security of the community.



(CONTINUED)

SATELLITE TRACKING OF PEOPLE LLC (CONTINUED)

The prior experience of observing the cycle of release, re-offend and re-incarcerate led our executive management team to develop a monitoring device that incorporated the most advanced and proven technology into supervising juveniles and adult offenders in the community. They developed BluTag® and VeriTracks®.

BluTag® was the first one-piece active GPS monitoring device to house its receiver and transmitter in a single unit. VeriTracks® is our patented Internet-based tracking application that receives and stores all monitoring data and offender information.

The monitoring needs of our customers led us to develop and deploy BluTag® devices that transmit monitoring data at different scheduled intervals. We own our hardware, software and intellectual property, which allows STOP to quickly respond to our customer's changing needs. We partner with our customers to develop the best solution for each offender group. Our research and development team also actively seeks out new technology and develops new applications for existing technology to apply to the corrections industry.

Satellite Tracking of People LLC

Electronic Monitoring Industry

Voice Verification Technology

Remote Alcohol Technology

RF (Radio Frequency) Technology

**GPS (Global Positioning Satellite)
Technology**

How GPS Works

The basis of GPS is triangulation from satellites owned and operated by the United States Department of Defense.

To "triangulate," a GPS receiver measures distance using the travel time of radio signals from the satellites.

To receive a latitude and longitude the GPS receiver must receive or "see" three or more satellites.



GPS Offender Monitoring Technology

Active, Hybrid and Passive

• Two Piece vs. One Piece Technology

• 102,767 false alerts*

Proven GPS Solution

• Largest deployed GPS Program in USA

• CDCR over 4000 High Risk Sex Offenders



***Tennessee Board of Probation and Parole In conjunction with Middle Tennessee State University Department of Criminal Justice Administration**

BluTag “One-Piece” GPS Tracking Unit

World’s first one-piece GPS tracking device, including GPS and GSM/GPRS

Tamper resistant fiber optic strap

• Battery life of 30 hours

Weights 6 oz.

Water resistant to 15 feet

Takes a data point once a min

Audible tone & vibrate features



VeriTracks Web-Based Software

Web-based Internet software

Near real-time notifications

Customized reports for individual agency needs

All offender information available in real-time 24/7/365 for any dates needed

Customized time sensitive Inclusion & Exclusion Zones

Create Zones that are specific to offender

Exclusion – Locations Offenders are restricted from:

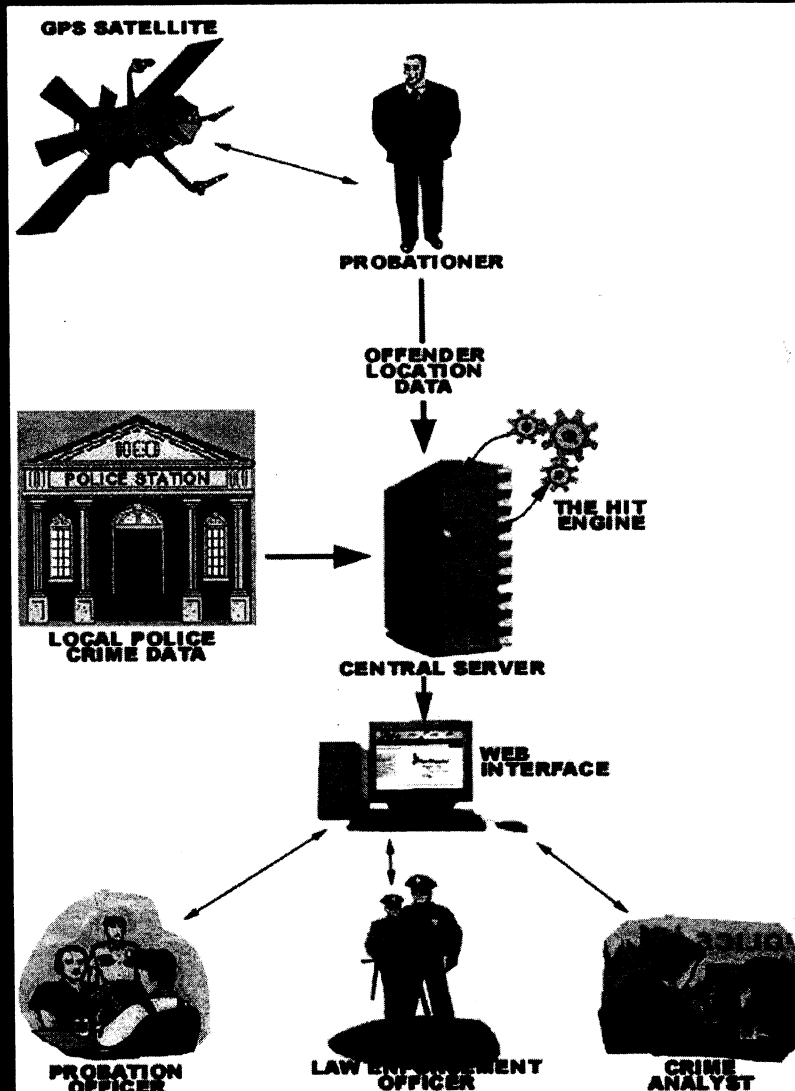
**Around Schools, Play Grounds,
Near a victim's home, known trouble spots**

Inclusion – Locations where Offenders are required to be

**Home (Curfew)
Work during work hours
Treatment or other required meetings**

**Satellite Tracking of People
Patented
Automated Crime Scene
Correlation**

How Automated Crime Scene Correlation Works



The BluTag records offender location
GPS data transmitted to
VeriTracks server.

Crime Incident Data from local law
enforcement extracted and
integrated with location data.

Computer compares crime scenes
and offender movement to
look for "hits"

Automatic notification of "hits"
via e-mail and other means.

Los Angeles, CA FOX Affiliate

Hours (4):

Export KML

Where can GPS Monitoring Used?

Jail Overcrowding

Sex Offender Monitoring

Drug Offenders, DUI Offenders

Community Reentry, Work Release

Alternative Sentencing, Pretrial Release

Treatment & Intervention, etc.

1 in 100 USA Citizens in Jail*

Prisons and Jails are “24-7” operations

*\$23,876 in 2005, the most recent year for which data were available. Rhode Island spent the most per inmate (\$44,860) while Louisiana had the lowest per inmate cost, \$13,009**

Kentucky and Nevada are two states with relatively small correctional systems hit hard by growth*

The Pew Charitable Trusts Published 2008*

Why use GPS Monitoring?

**\$23,876* national average for incarceration
per year, per offender**

Under \$7.00 a day for GPS monitoring

Cost that could be offender funded

The Pew Charitable Trusts Published 2008*

QUESTIONS ?

Contact Information

David P. DeGeorge

916-533-3111

**Call today to schedule an on site
demonstration**